

# 磁力泵

Magnetic drive pump



氟塑料磁力泵 Fluorocarbon Magnetic Pump



Stainless Steel Magnetic Pump

辰禹（重庆）流体设备有限公司

Chen Yu (Chongqing) Fluid Equipment Co., Ltd.

网站 Website: [www.chenyufluid.com](http://www.chenyufluid.com)

# 目录 Catalogue

一、AMF(全新第四代)氟塑料磁力泵 AMF (New Fourth Generation) Fluoroplastic Magnetic Pump.....	1
1、用途 Application.....	1
2、设计特点 Design feature.....	1
3、零件图 Part drawing.....	2
4、结构图 Structural diagram.....	2
5、型号意义 Model designation.....	3
6、性能参数 Performance parameter.....	3
二、TMF(全新第三代)氟塑料磁力泵 TMF (Third Generation) Fluoroplastic Magnetic Pump.....	4
1、用途 Application.....	4
2、设计特点 Design feature.....	4
3、零件图 Part drawing.....	5
4、结构图 Structural diagram.....	5
5、型号意义 Model designation.....	6
6、性能参数 Performance parameter.....	6
三、IMD-F ( 第二代 ) 氟塑料磁力泵 IMD-F (Second Generation) Fluoroplastic Magnetic Pump.....	8
1、用途 Application.....	8
2、设计特点 Design feature.....	8
3、零件图 Part drawing.....	9
4、结构图 Structural diagram.....	9
5、型号意义 Model designation.....	10
6、性能参数 Performance parameter.....	10
四、CQB-F ( 第一代 ) 氟塑料磁力泵 CQB-F (First Generation) Fluoroplastic Magnetic Pump.....	12
1、用途 Application.....	12



2、设计特点 Design feature .....	12
3、分类 Classify .....	12
4、零件图 Part drawing .....	13
5、结构图 Structural diagram .....	13
6、型号意义 Model designation .....	14
7、性能参数 Performance parameter .....	15
五、TMC 不锈钢磁力泵 TMC Stainless Steel Magnetic Pump .....	16
1、用途 Application .....	16
2、概述 Summary .....	16
3、设计特点 Design feature .....	16
4、零件图 Part drawing .....	17
5、结构图 Structural diagram .....	17
6、型号意义 Model designation .....	18
7、性能参数 Performance parameter .....	18
六、CQ 不锈钢磁力泵 CQ Stainless Steel Magnetic Pump .....	20
1、用途 Application .....	20
2、概述 Summary .....	20
3、设计特点 Design feature .....	20
4、零件图 Part drawing .....	21
5、结构图 Structural diagram .....	21
6、型号意义 Model designation .....	22
7、性能参数 Performance parameter .....	22



## 磁力泵分为氟塑料磁力泵和不锈钢磁力泵

Magnetic pumps are classified into fluoroplastic magnetic pumps and stainless steel magnetic pumps.

### 氟塑料磁力泵四大类 Four Major Categories of Fluorine Plastic Magnetic Pump

- AMF：第四代氟塑料磁力泵，基于 API-685 标准设计的最新一代磁力泵。
- The fourth-generation fluoroplastic magnetic pump is the latest model designed according to API-685 standards.
- TMF：第三代氟塑料磁力泵，结构简单，性能稳定，性价比高。
- The third-generation fluorine plastic magnetic force pump features a simple structure, stable performance, and high cost-effectiveness.
- IMD：第二代氟塑料磁力泵，优化了零件结构，采用分体式叶轮转子，消除了磁涡流。
- The second-generation fluoroplastic magnetic pump features optimized component structure and adopts a split-type impeller rotor design, eliminating magnetic eddy currents.
- CQB：第一代氟塑料磁力泵，性价比高，适合输送一些腐蚀性介质。
- The first-generation fluoroplastic magnetic pump offers high cost-effectiveness and is suitable for transporting corrosive media.

### 不锈钢磁力泵两大类 Two Major Types of Stainless Steel Magnetic Pump

- TMC：重型不锈钢磁力泵，基于 HG/T2730 标准设计。
- Heavy-duty stainless steel magnetic pump designed based on the HG/T2730 standard.
- CQ：轻型不锈钢磁力泵，适用于低密度介质的输送。
- Lightweight stainless steel magnetic pump, suitable for conveying low-density media

# 一、AMF(全新第四代)氟塑料磁力泵 AMF (New Fourth Generation) Fluoroplastic Magnetic Pump

## 1、用途 Application

石油化工、制药流程中易燃、易爆、有毒及稀有贵重液体的输送。

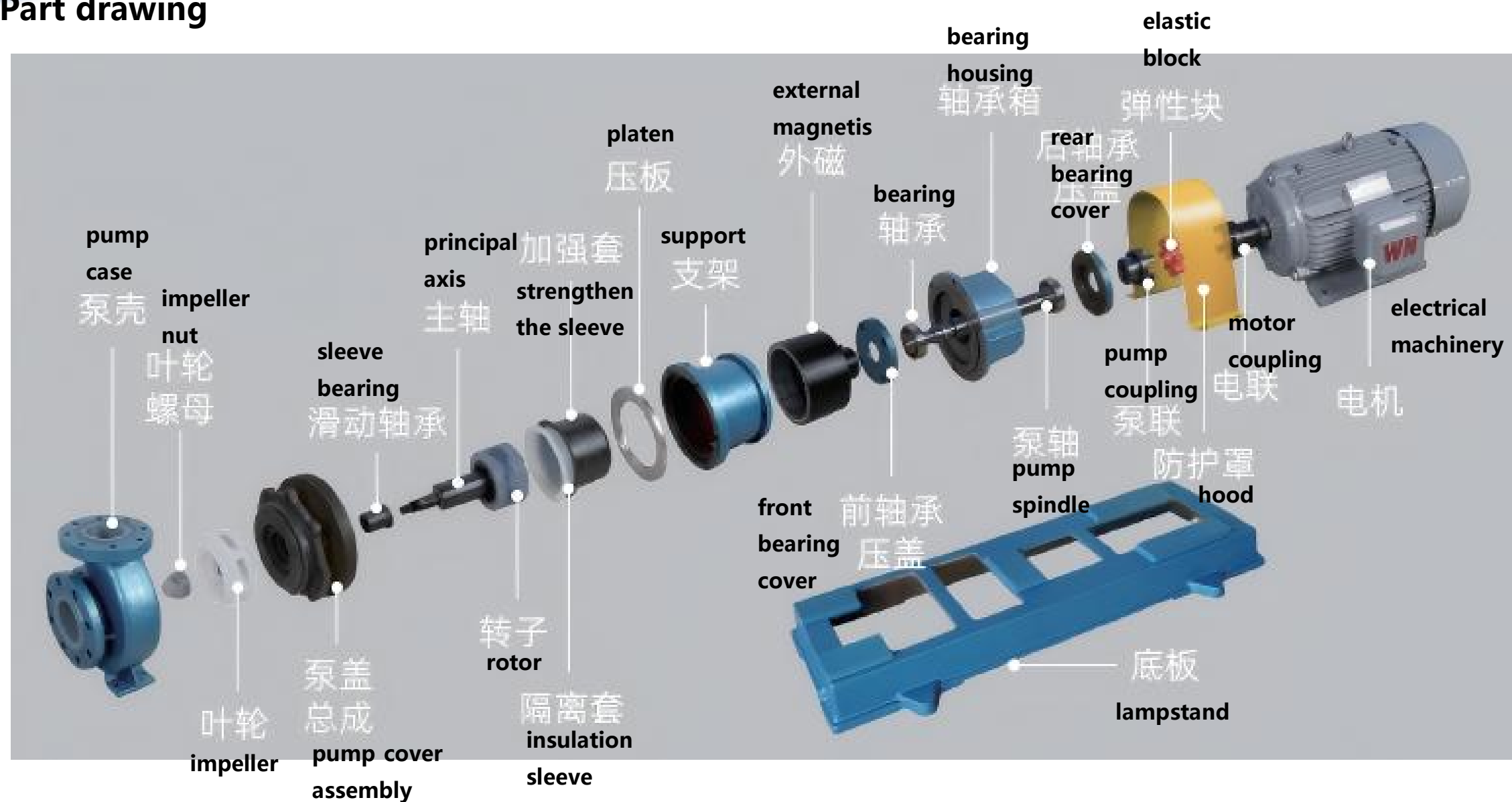
Transportation of flammable, explosive, toxic, and rare valuable liquids in petrochemical and pharmaceutical processes.



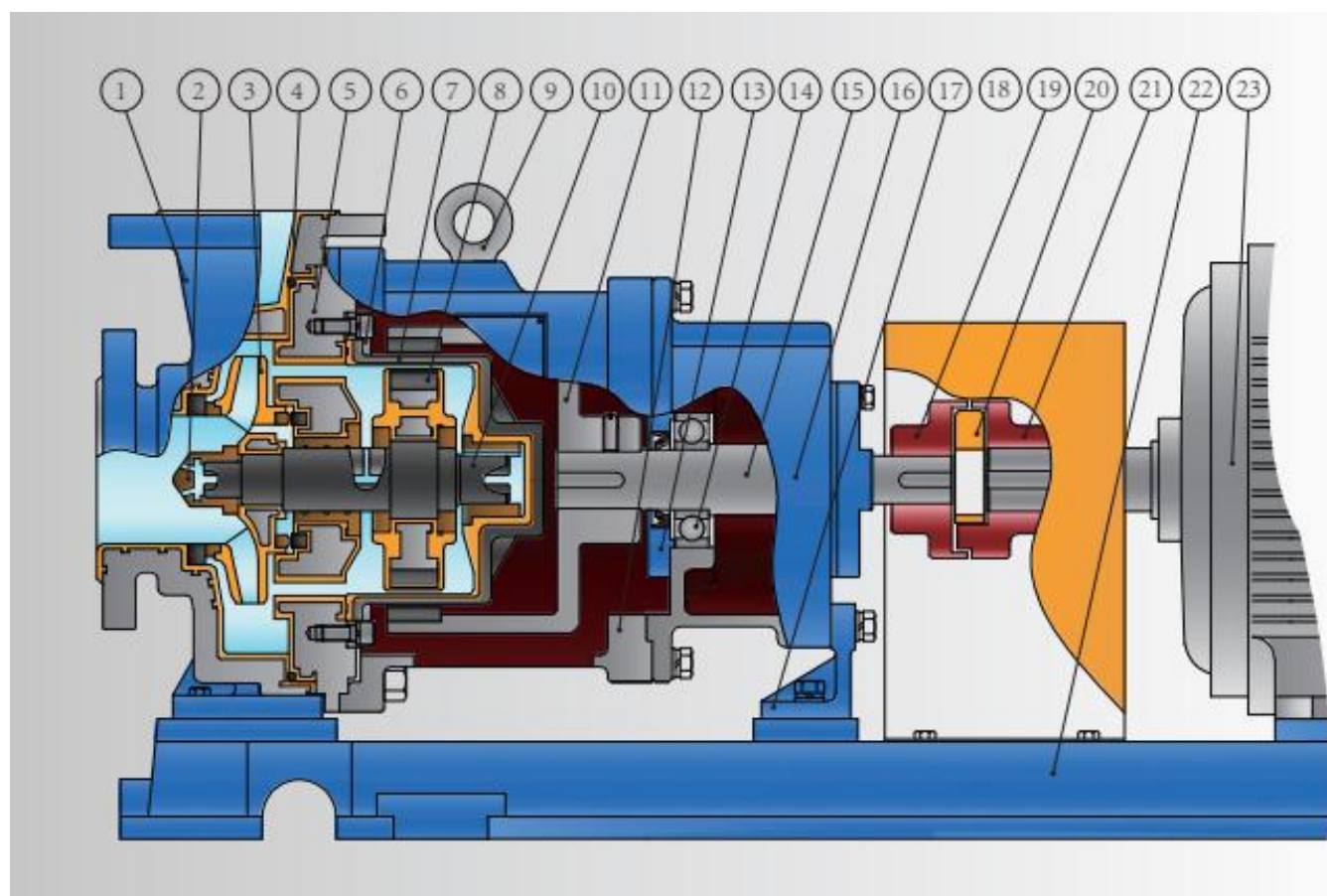
## 2、设计特点 Design feature

- 最新第四代衬氟磁力泵，全新结构设计，应用多种新型材料，零件强度和稳定性极大提升，可适用于各类高温、高压、高密度等极限工况。
- The latest fourth-generation fluorine-lined magnetic pump features an innovative structural design incorporating multiple advanced materials, significantly enhancing component strength and stability. It is capable of operating under extreme conditions including high temperatures, high pressures, and high densities.
- 过流部件全金属衬氟，兼具高耐腐蚀性和高抗拉强度;采用新型耐磨碳化硅材料轴承，不仅有常规碳化硅的耐磨耐腐等特点，还有更好的自润滑性;加强套引入碳纤维材料，相较于聚醚醚酮材料有更高的耐压强度，高压工况下更安全。
- The flow components are fully lined with fluorine metal, combining high corrosion resistance and high tensile strength. The bearings utilize a novel wear-resistant silicon carbide material, which not only retains the conventional wear and corrosion resistance properties of silicon carbide but also exhibits superior self-lubrication performance. The reinforced sleeve incorporates carbon fiber material, offering higher pressure resistance compared to polyetheretherketone (PEEK) materials, ensuring enhanced safety under high-pressure operating conditions.

### 3、零件图 Part drawing



### 4、结构图 Structural diagram



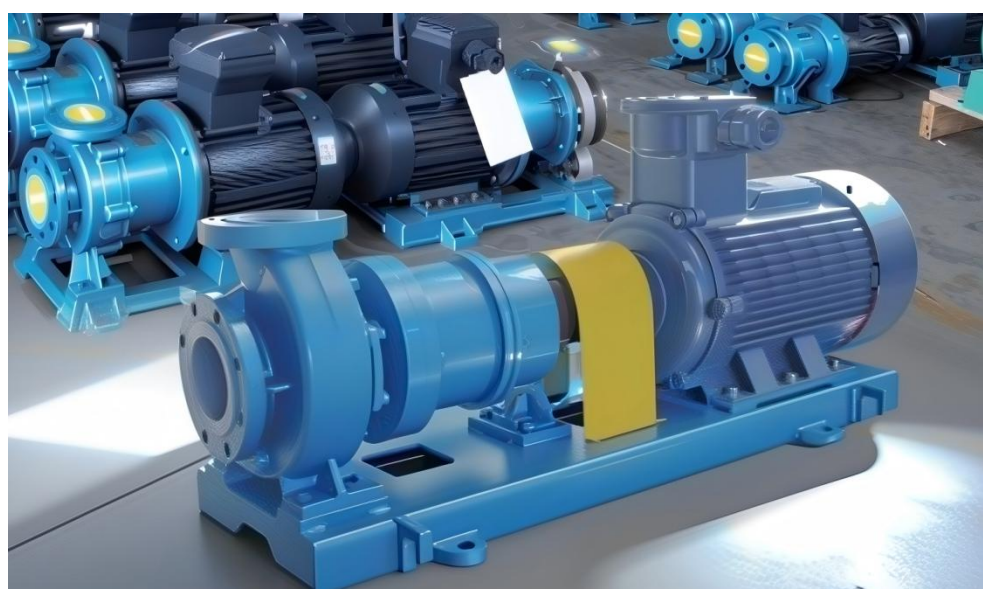
1	泵壳 pump case	13	轴承压盖 bearing cover
2	叶轮螺母 impeller nut	14	轴承 bearing
3	叶轮 impeller	15	泵轴 pump spindle
4	密封圈 gasket ring	16	轴承箱 bearing housing
5	后盖 rear cover	17	支撑架 carriage
6	隔离套压板 isolation spacer plate	18	骨架油封 skeleton oil seal
7	加强套 strengthen the sleeve	19	泵联轴器 pump coupling
8	内磁转子 internal magnetic rotor	20	弹性块 elastic block
9	吊环 hand ring	21	电机联轴器 motor coupling
10	主轴 principal axis	22	底座 lampstand
11	外磁 external magnetism	23	电机 electrical machinery
12	连接架 connector	24	

## 5、型号意义 Model designation

**150 A M F-32**

150.....进口口径(mm) Import diameter (mm)  
 A.....API685 标准 API685 standard  
 M.....磁力驱动泵 Magnetic force driving pump  
 F.....材质为氟塑料 Material: fluoroplastic  
 32.....扬程(m) Head(m)

## 6、性能参数 Performance parameter



NO.	Type	Flow	Head	EFF	NPSHr	Aperture	Speed	Power
序号	型号	流量 m <sup>3</sup> /h	扬程 m	效率 %	汽蚀余量 m	进口·出口 mm	转速 r/min	电机功率 kW
	50AMF-50L	* 12.5	50	36	3.2	50×32	2900	7.5
	50AMF-80L	* 12.5	80	27	3.2	50×32	2900	11
	65AMF-50L	* 25	50	45	3.5	65×40	2900	11
	65AMF-80L	* 25	80	40	3.5	65×40	2900	18.5
	80AMF-50L	* 50	50	57	4.2	80×50	2900	15
	80AMF-80L	* 50	80	49	4.2	80×50	2900	30
	100AMF-32L	* 100	32	66	5.0	100×80	2900	18.5
	100AMF-50L	* 100	50	64	5.0	100×65	2900	30
长 支 架 型	100AMF-80L	* 100	80	61	5.0	100×65	2900	45
	125AMF-20L	* 160	20	54	5.8	125×100	2900	18.5
	125AMF-32L	* 160	32	68	5.8	125×100	2900	30
	125AMF-50L	* 200	50	70	6.0	125×100	2900	55
	125AMF-80L	* 200	80	68	6.0	125×100	2900	75
	150AMF-20L	* 200	20	69	2.8	150×125	1450	22
	150AMF-32L	* 200	32	67	2.8	150×125	1450	45
	150AMF-50L	* 200	50	63	2.8	150×125	1450	75
	200AMF-20L	* 200	20	72	3.5	200×150	1450	45
	200AMF-32L	* 400	32	74	3.5	200×150	1450	75
	200AMF-50L	* 400	50	70	3.5	200×150	1450	110
短 支 架 型	50AMF-50	* 12.5	50	36	3.2	50×32	2900	7.5
	50AMF-80	* 12.5	80	27	3.2	50×32	2900	11
	65AMF-50	* 25	50	45	3.5	65×40	2900	11
	65AMF-80	* 25	80	40	3.5	65×40	2900	18.5
	80AMF-50	* 50	50	57	4.2	80×50	2900	15
	80AMF-80	* 50	80	49	4.2	80×50	2900	30
	100AMF-32	* 100	32	66	5.0	100×80	2900	18.5
	100AMF-50	* 100	50	64	5.0	100×65	2900	30
	125AMF-20	* 160	20	61	5.0	100×65	2900	18.5
	125AMF-32	* 200	32	54	5.8	125×100	2900	30

## 二、TMF(全新第三代)氟塑料磁力泵 TMF (Third Generation) Fluoroplastic Magnetic Pump

### 1、用途 Application

TMF 磁力泵全密封、无泄漏高效节能，运用范围广泛，适用于化工、制酸、制碱、石油、核电、化学制品、电镀、电解、化纤、化肥、制药，特别是剧毒、易燃、易爆的液体输送。

The TMF magnetic pump features complete sealing, leak-proof design, high efficiency and energy-saving performance, with extensive application ranges. It is suitable for chemical industries, acid production, alkali manufacturing, petroleum, nuclear power, chemical products, electroplating, electrolysis, chemical fibers, fertilizers, pharmaceuticals and particularly for the transportation of highly toxic, flammable, and explosive liquids.

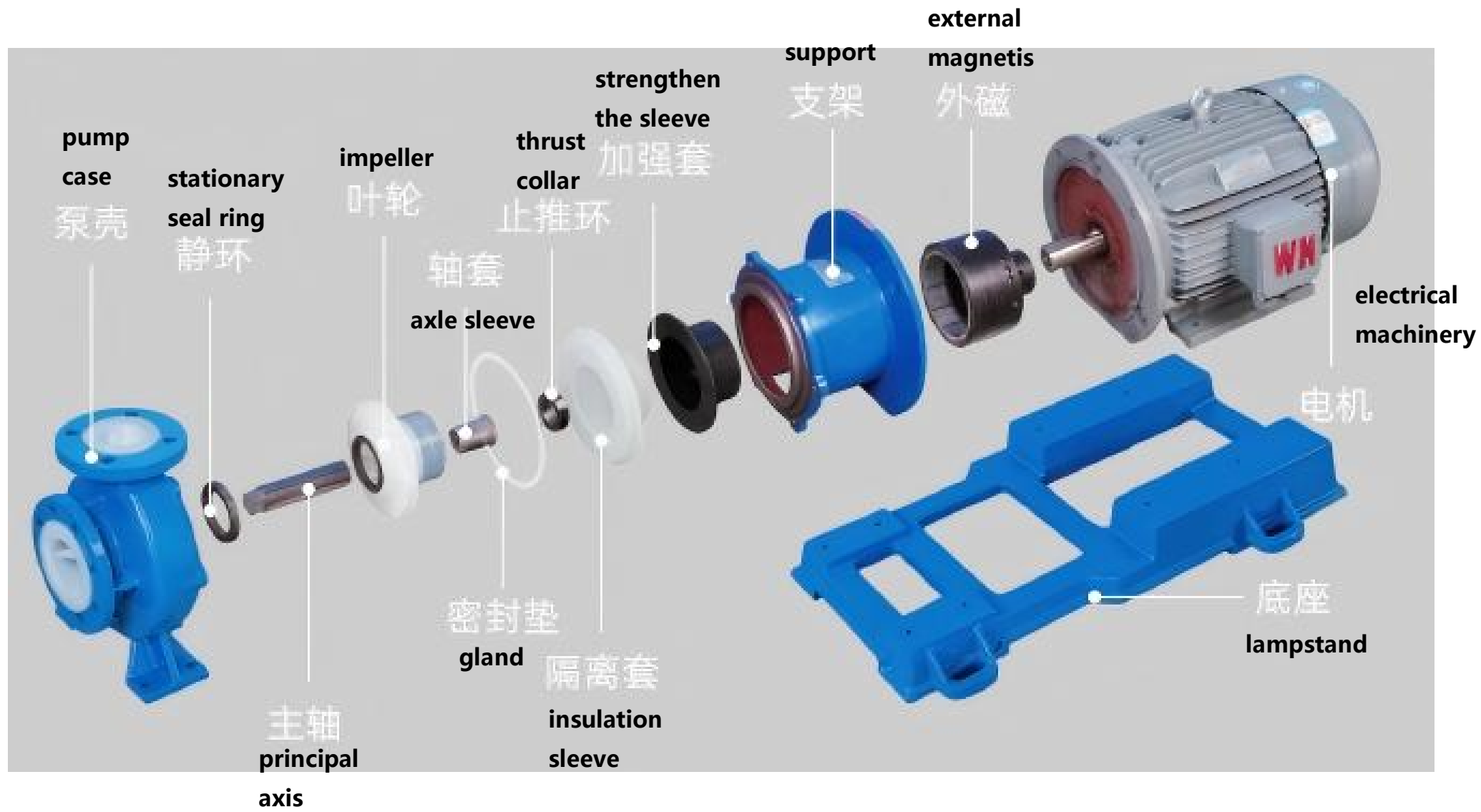


### 2、设计特点 Design feature

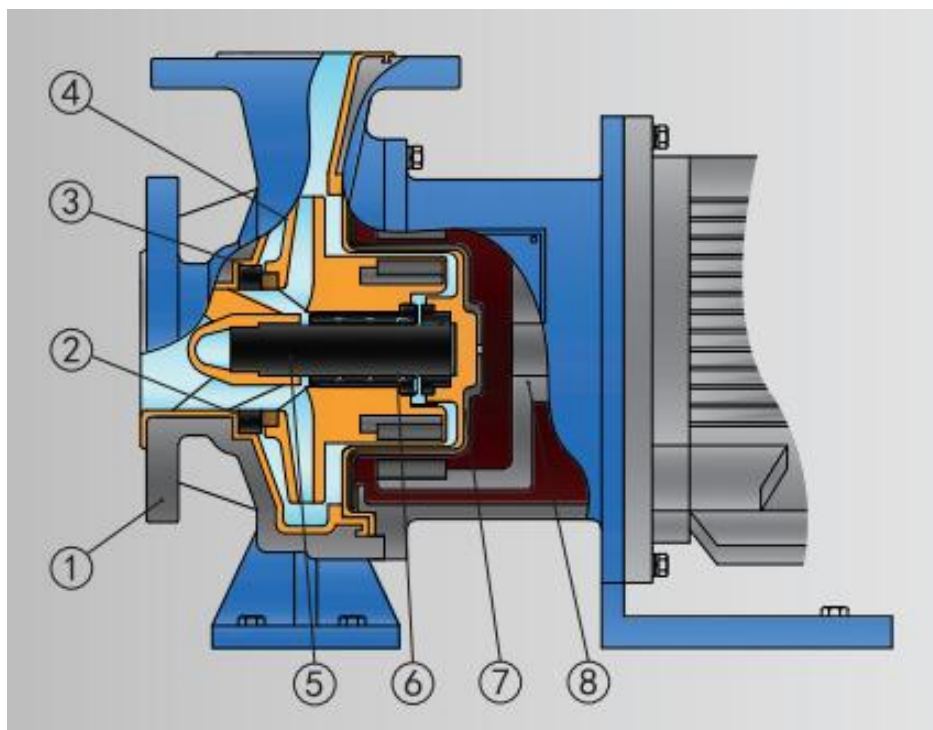
- TMF 第三代衬氟磁力泵，相对于传统磁力泵具有更大优势。结构简单，各部件设计强度更高。
- The TMF third-generation fluorine-lined magnetic force pump offers significant advantages over traditional magnetic force pumps. It features a simple structure with components designed to exhibit higher strength.
- 内旋转部件由双点支撑变为单点支撑，保证了叶轮与轴的同心度，减少了配件的损坏率。
- The internal rotating components transition from dual-point support to single-point support, ensuring the concentricity between the impeller and shaft while reducing the failure rate of components.
- 采用 T 型联体叶轮设计，叶轮磁钢一体成型，强大的扭矩传送，性能稳定，不会变形。全碳化硅材质的对磨材料，轴与轴套在运行时会受到介质的压力作用，两者之间形成液膜，极大的延长使用寿命。
- The design adopts a T-type coupled impeller configuration with integrated magnet and impeller casting, enabling robust torque transmission and stable performance without deformation. The fully silicon carbide material of the paired grinding components ensures that the shaft and sleeve are subjected to medium pressure during operation, forming a liquid film between them to significantly extend service life.
- 运用多种新型材料，可以根据输送介质不同更换各种适合的材料。可以定制成高温型、碱液型、颗粒型、保温型等。

- By utilizing various novel materials, suitable materials can be selected according to different conveyed media. Custom configurations are available for high-temperature applications, alkaline solution environments, granular materials, and thermal insulation applications.

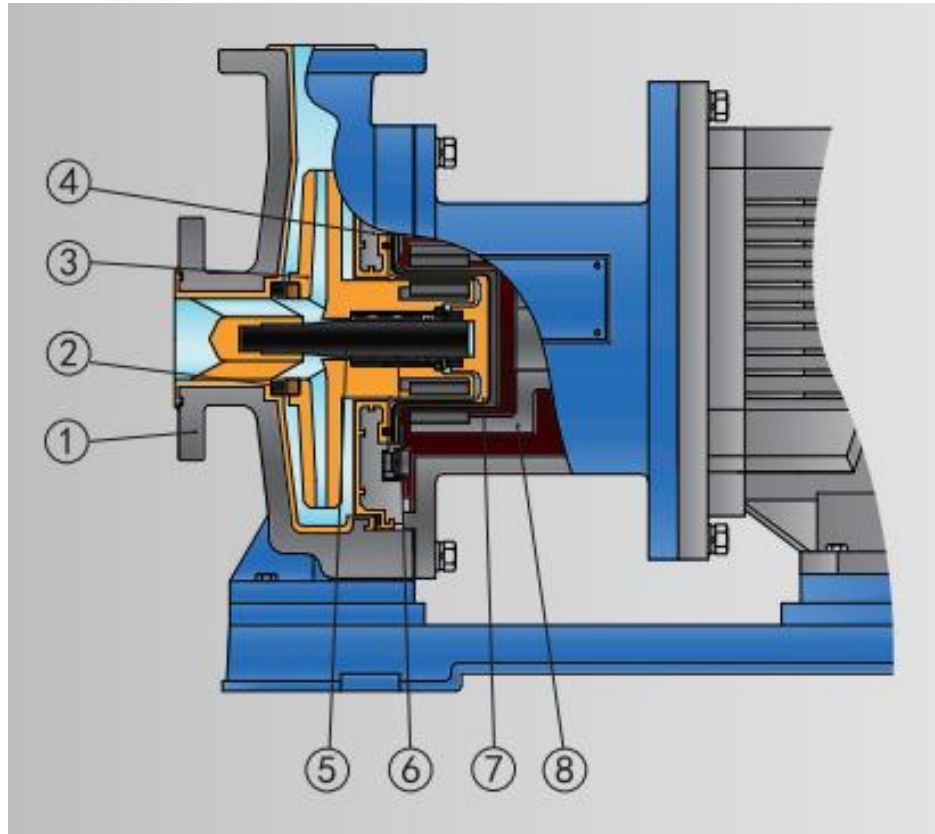
### 3、零件图 Part drawing



### 4、结构图 Structural diagram



1	泵壳 pump case
2	静环 stationary seal ring
3	动环 rotating seal ring
4	叶轮 impeller
5	主轴 principal axis
6	轴套 axle sleeve
7	隔离套总成 isolation sleeve assembly
8	外磁 external magnetism



1	泵壳 pump case
2	静环 stationary seal ring
3	叶轮 impeller
4	后盖 rear cover
5	主轴 principal axis
6	轴套 axle sleeve
7	隔离套总成 isolation sleeve assembly
8	外磁 external magnetism

## 5、型号意义 Model designation

**50 M F-30G**

50.....	进口口径(mm)	Import diameter (mm)
M.....	磁力驱动泵	Magnetic force driving pump
F.....	过流部件材质为氟塑料	The material of the flow-through component is fluoroplastic
30.....	扬程(m)	Head(m)
G.....	高温型	High temperature modification

## 6、性能参数 Performance parameter

NO.	Type	Flow	Head	EFF	NPSHr	Aperture	Speed	Power	Weight
序号	型号	流量 m <sup>3</sup> /h	扬程 m	效率 %	汽蚀余量 m	进口·出口 mm	转速 r/min	电机功率 kW	重量 Kg
1	32TMF-20	2	22	26	2.5	32×20	2900	1.1	35
		* 3.6	20	42					
		4.5	20	51					
2	32TMF-32	2	33	22	2.5	32×20	2900	2.2	46
		* 3.6	32	34					
		4.5	32	42					
3	40TMF-20	5	22	36	2.8	40×25	2900	1.5	40
		* 6.3	20	42					
		8.5	20	49					
4	40TMF-32	5	33	42	2.8	40×25	2900	3	68
		* 6.3	32	52					
		8.5	32	66					

NO.	Type	Flow	Head	EFF	NPSHr	Aperture	Speed	Power	Weight
序号	型号	流量 m <sup>3</sup> /h	扬程 m	效率 %	汽蚀余量 m	进口·出口 mm	转速 r/min	电机功率 kW	重量 Kg
5	40TMF-50	5	52	31	2.8	40×25	2900	5.5	108
		* 6.3	50	36					
		8.5	49	44					
6	40TMF-80	5	82	16	2.8	40×25	2900	11	210
		* 6.3	80	19					
		8.5	80	24					
7	50TMF-20	9	22	48	3.2	50×32	2900	2.2	51
		* 12.5	20	56					
		16	20	63					
8	50TMF-32	9	32	41	3.2	50×32	2900	4	73
		* 12.5	32	48					
		16	29	52					
9	50TMF-50	9	54	33	3.2	50×32	2900	5.5	115
		* 12.5	50	40					
		16	50	44					
10	50TMF-80	9	82	25	3.2	50×32	2900	11	225
		* 12.5	80	32					
		16	78	38					
11	65TMF-20	17	20	58	3.5	65×50	2900	3	56
		* 25	20	65					
		30	17	71					
12	65TMF-32	17	36	48	3.5	65×50	2900	5.5	107
		* 25	32	57					
		35	32	63					
13	65TMF-50	17	55	43	3.5	65×40	2900	11	220
		* 25	50	54					
		35	50	61					
14	65TMF-80	17	81	36	3.5	65×40	2900	18.5	280
		* 25	80	45					
		35	78	53					
15	80TMF-20	36	22	61	4.0	80×65	2900	7.5	115
		* 50	20	72					
		60	17	75					
16	80TMF-32	36	35	56	4.0	80×65	2900	11	230
		* 50	32	65					
		65	29	68					
17	80TMF-50	36	58	62	4.0	80×50	2900	15	260
		* 50	50	71					
		60	50	74					
18	80TMF-80	36	85	52	4.0	80×50	2900	30	345
		* 50	80	57					
		60	78	58					
19	100TMF-20	70	23	54	4.8	100×80	2900	11	230
		* 100	20	61					
		110	17	61					
20	100TMF-32	70	36	58	4.8	100×80	2900	18.5	295
		* 100	32	64				22	
		120	29	63					



# 三、IMD-F ( 第二代 ) 氟塑料磁力泵 IMD-F (Second Generation) Fluoroplastic Magnetic Pump

## 1、用途 Application

适用于化工、医药、铝箔、制酸、涂装、有色金属等行业。不含铁杂质或硬质固体颗粒的液体输送。

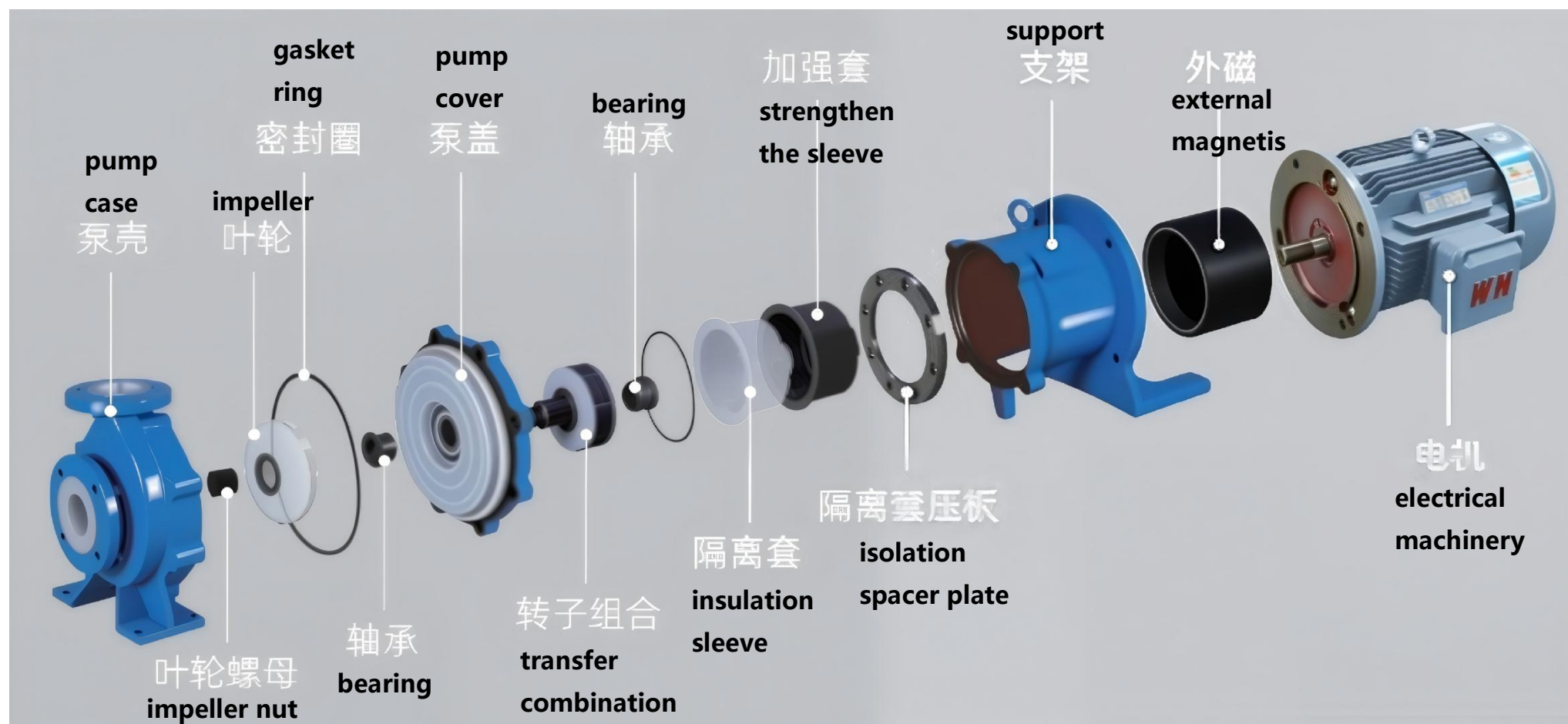
Applicable to industries such as chemical engineering, pharmaceuticals, aluminum foil, acid production, coating, and non-ferrous metals. Suitable for liquid transportation without iron impurities or hard solid particles.



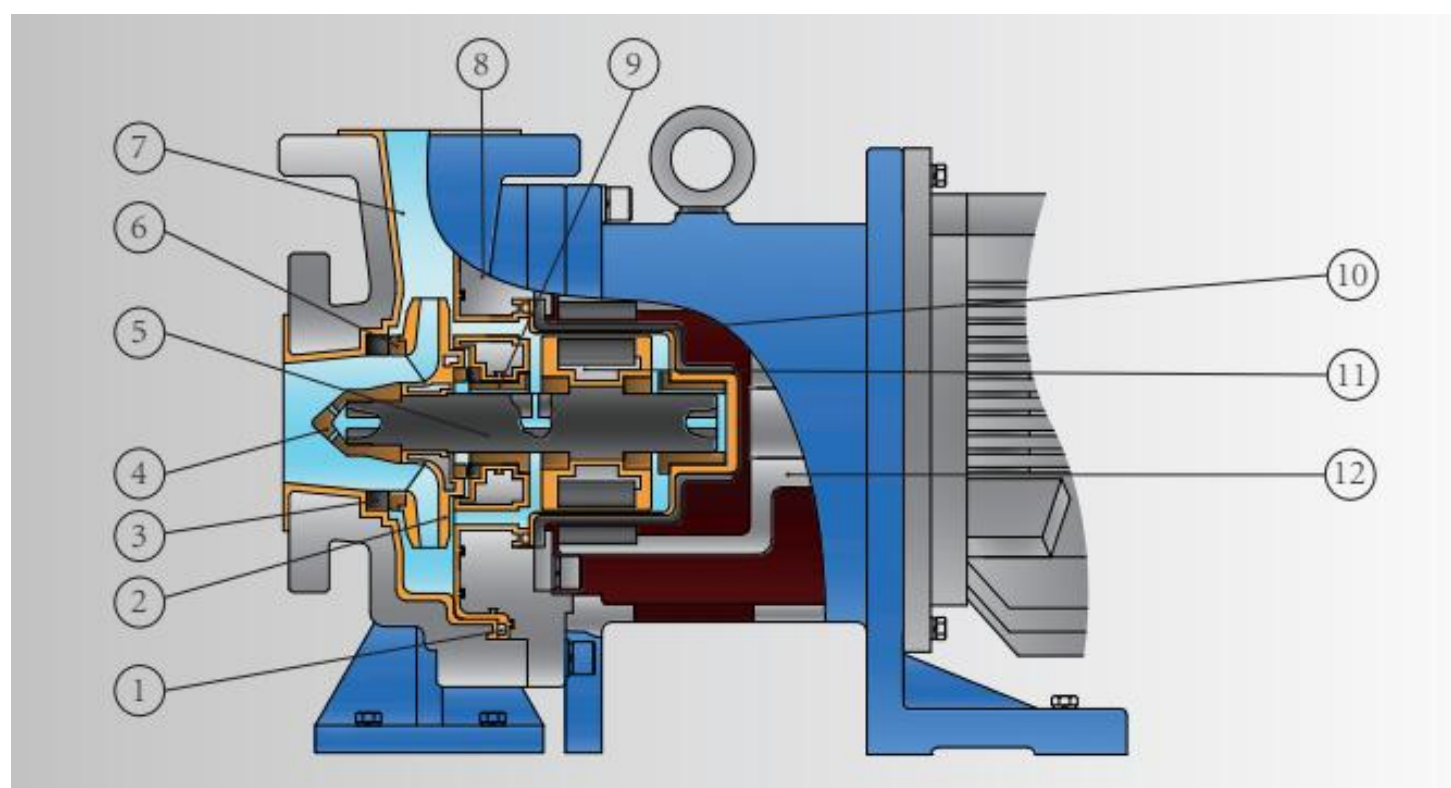
## 2、设计特点 Design feature

- IMD-F 第二代重型衬氟磁力泵，优化了零件结构，采用了分体式叶轮转子，消除了磁涡流。磁扭矩强劲产品高效、节能。流量:3m<sup>3</sup>/h~200m<sup>3</sup>/h;扬程:5m~50m;比重:<1600kg/m<sup>3</sup>。采用独特的后拉式结构，可以轻松的进行内部检修和零件更换，无需拆卸管道，大大方便了日常的检修和保养工作。
- The IMD-F second-generation heavy-duty fluorine-lined magnetic pump features optimized component structures and a split-type impeller rotor design that eliminates magnetic eddy currents. Delivering robust magnetic torque, this high-efficiency product offers energy-saving performance with flow rates ranging from 3m<sup>3</sup>/h to 200m<sup>3</sup>/h, head capacities of 5m to 50m, and specific gravity below 1600kg/m<sup>3</sup>. Its unique rear-pull structure enables effortless internal maintenance and part replacement without pipeline disassembly, significantly streamlining routine maintenance operations.
- 隔离套采用聚醚醚酮填充碳纤维制成，具有高强度的力学性能，无磁损，承压高。
- The insulation sleeve is fabricated from carbon fiber filled with polyetheretherketone (PEEK), exhibiting high mechanical strength, zero magnetic loss, and superior pressure resistance.
- 外磁与隔离套即使接触，也不会产生火花，可确保安全。
- Even when the external magnet and isolation sleeve come into contact, no sparks will be generated, ensuring safe operation.

### 3、零件图 Part drawing



### 4、结构图 Structural diagram



1	密封圈 gasket ring	7	泵壳 pump case
2	叶轮 impeller	8	泵盖 pump bonnet
3	静环 stationary seal ring	9	滑动轴承 sleeve bearing
4	叶轮螺母 impeller nut	10	隔离套总成 isolation sleeve assembly
5	主轴 principal axis	11	转子 rotor
6	叶轮口环 impeller inlet ring	12	外磁 external magnetism

## 5、型号意义 Model designation

**IMD 65-50-130 F**

IMD.....磁力耦合传动化工泵 Magnetic Coupling Transmission Chemical Pump  
 65.....进口口径(mm) Import diameter (mm)  
 50.....出口口径(mm) Export diameter (mm)  
 130.....叶轮名义直径(mm) Nominal diameter of impeller (mm)  
 F.....过流部件材质为氟塑料 The material of the flow-through component is fluoroplastic

## 6、性能参数 Performance parameter



NO.	Type	Flow	Head	EFF	NPSHr	Aperture	Speed	Power	Weight
序号	型号	流量 m <sup>3</sup> /h	扬程 m	效率 %	汽蚀余量 m	进口·出口 mm	转速 r/min	电机功率 kW	重量 Kg
1	IMD40-25-130F	4	21	17	2.8	40×25	2900	3	85
		* 6	20	27					
		8	18	35					
2	IMD40-25-140F	4	27	20	2.8	40×25	2900	3	85
		* 6	26	30					
		8	24	38					
3	IMD40-25-150F	4	31	22	2.8	40×25	2900	3	85
		* 6	30	32					
		8	28	40					
4	IMD40-25-160F	4	35	25	2.8	40×25	2900	3	85
		* 6	34	35					
		8	32	42					
5	IMD40-25-165F	4	37	26	2.8	40×25	2900	3	85
		* 6	36	36					
		8	34	44					
6	IMD40-25-170F	4	43	32	2.8	40×25	2900	4	90
		* 6	43	42					
		8	43	50					
7	IMD50-40-140F	8	28	20	3.2	50×40	2900	5.5	140
		* 12.5	26	28					
		15	23	32					
8	IMD50-40-150F	8	32	23	3.2	50×40	2900	5.5	140
		* 12.5	30	30					
		15	27	36					
9	IMD50-40-160F	8	37	26	3.2	50×40	2900	5.5	140
		* 12.5	36	35					
		15	33	40					
10	IMD50-40-165F	8	40	28	3.2	50×40	2900	5.5	140
		* 12.5	39	36					
		15	36	42					

NO.	Type	Flow	Head	EFF	NPSHr	Aperture	Speed	Power	Weight
序号	型号	流量 m <sup>3</sup> /h	扬程 m	效率 %	汽蚀余量 m	进口·出口 mm	转速 r/min	电机功率 kW	重量 Kg
11	IMD50-32-200F	8	40	28	3.2	50×32	2900	7.5	170
		* 12.5	39	40					
		15	36	43					
12	IMD65-50-130F	20	20	45	3.5	65×50	2900	5.5	135
		* 30	19	55					
		35	17	56					
13	IMD65-50-165F	20	37	44	3.5	65×50	2900	7.5	145
		* 30	35	54					
		35	33	57					
14	IMD65-40-200F	15	52	36	3.5	65×40	2900	11	300
		* 25	50	50					
		35	45	54					
15	IMD80-65-120F	35	19	35	4	80×65	2900	11	300
		* 60	17	51					
		70	13	48					
16	IMD80-50-200F	35	52	50	4	80×50	2900	18.5	335
		* 50	50	55					
		60	45	56					
17	IMD100-80-160F	60	34	50	5	100×80	2900	30	435
		* 100	32	60					
		120	27	62					
18	IMD100-80-180F	60	42	50	5	100×80	2900	30	435
		* 100	40	60					
		120	35	62					
19	IMD125-100-180F	80	22	50	6	125×100	2900	30	660
		* 120	20	56					
		140	15	56					
20	IMD125-100-200F	100	40	50	6	125×100	2900	37	680
		* 120	37	56					
		160	32	56					



叶轮 impeller



转子 rotor

## 四、CQB-F (第一代) 氟塑料磁力泵 CQB-F (First Generation) Fluoroplastic Magnetic Pump

### 1、用途 Application

氯碱、氯苯、化成箔、酸洗、农药、医药、等行业强腐蚀性介质的输送。

Transportation of highly corrosive media in industries such as chlor-alkali, chlorobenzene, foil formation, pickling, pesticides, and pharmaceuticals.

### 2、设计特点 Design feature

CQB-F 第一代衬氟磁力泵，性价比高，适合输送一些腐蚀性介质。此系列泵通过碳化硅的轴传递扭矩，可以耐受任意介质腐蚀。耐温-20°C-100°C，不能定制高温型。

The CQB-F is the first-generation fluorine-lined magnetic pump, offering high cost-performance ratio and suitability for transporting corrosive media. This series of pumps transmits torque through silicon carbide shafts, enabling resistance to corrosion from any medium. Operating temperature range: -20°C to 100°C; high-temperature variants are not available for customization.

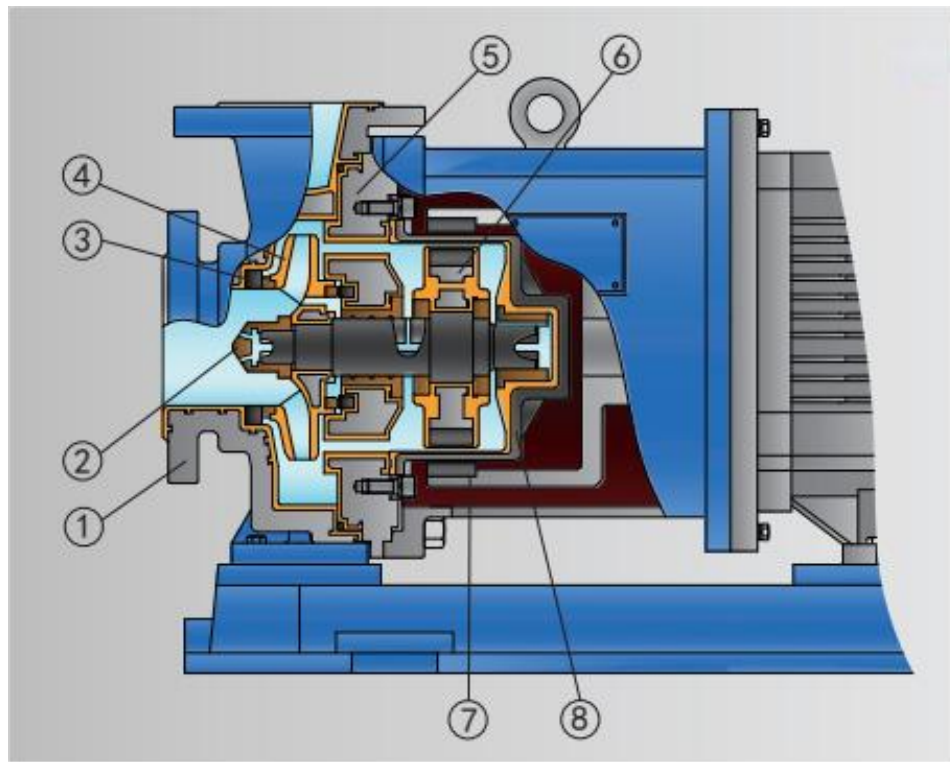
### 3、分类 Classify

- CQB-F 经典型：1、全塑壳体，设计压力 0.6MPa，有插管式、法兰式可选。2、衬塑壳体，设计压力 1.6MPa，法兰式连接。
- CQB-F Classic Type: 1. Full plastic housing, design pressure 0.6 MPa, available in tube-insertion type or flange type. 2. Plastic-lined housing, design pressure 1.6 MPa, flange connection.
- CQB-FD 短支架型：无轴承箱，泵外磁(磁性联轴器)直接与电机相连。
- CQB-FD short bracket type: without bearing housing, the pump's external magnet (magnetic coupling) is directly connected to the motor.
- CQB-FA 长支架型：有独立的轴承箱。
- CQB-FA long-stent type: equipped with an independent bearing housing.



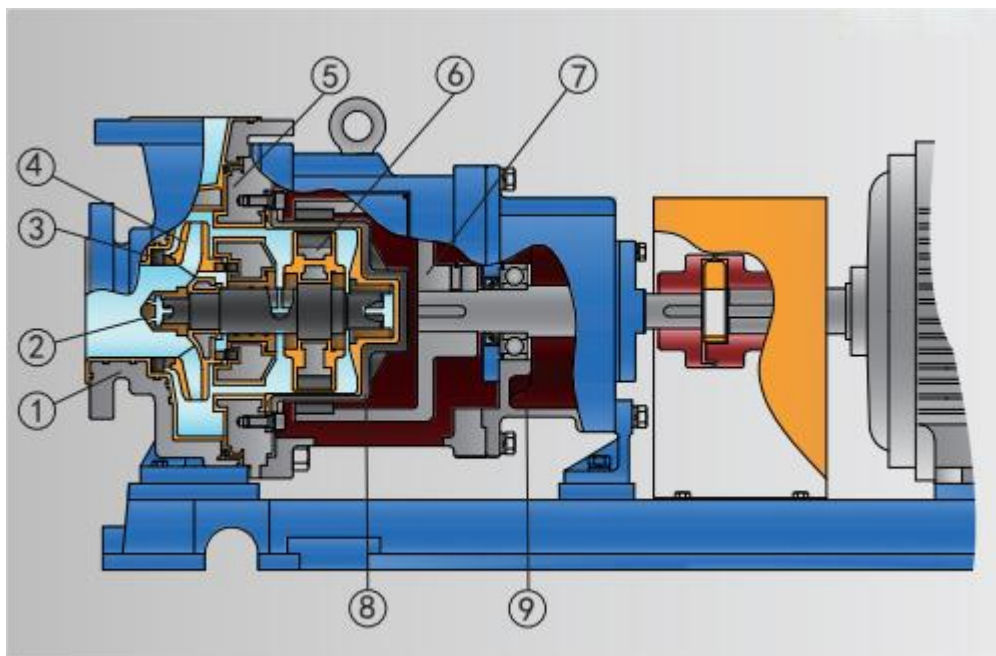


短支架型 Short stent type



1	泵壳 pump case
2	叶轮螺母 impeller nut
3	静环 stationary seal ring
4	叶轮 impeller
5	后盖 rear cover
6	内磁 internal magnetism
7	外磁 external magnetism
8	隔离套总成 isolation sleeve assembly

长支架型 Long support type



1	泵壳 pump case
2	叶轮螺母 impeller nut
3	静环 stationary seal ring
4	叶轮 impeller
5	后盖 rear cover
6	内磁 internal magnetism
7	外磁 external magnetism
8	隔离套总成 isolation sleeve assembly
9	轴承箱 bearing housing

## 6、型号意义 Model designation

**CQB 65-50-125 F A**

CQB.....	磁力耦合传动的离心泵	Centrifugal Pump with Magnetic Coupling Transmission
65.....	进口口径(mm)	Import diameter (mm)
50.....	出口口径(mm)	Export diameter (mm)
125.....	叶轮名义直径(mm)	Nominal diameter of impeller (mm)
F.....	过流部件材质为氟塑料	The material of the flow-through component is fluoroplastic
D.....	短支架型	Short stent type
A.....	长支架改进型	Improved long support frame

## 7、性能参数 Performance parameter

NO.	Type	Flow	Head	EFF	NPSHr	Aperture	Speed	Power	Weight	
序号	型号	流量 m <sup>3</sup> /h	扬程 m	效率 %	汽蚀余量 m	进口·出口 mm	转速 r/min	电机功率 kW	重量 Kg	
Classic style	经典型	CQB16-12-50F	* 0.6	2	8	1.6	16×12	2900	0.025	5
		CQB15-15-65F	* 0.8	3.2	16	1.6	15×15	2900	0.18	7
		CQB20-15-75F	* 1.6	7	22	2.1	20×15	2900	0.18	8
		CQB25-20-100F	* 2.5	10.5	28	2.5	25×20	2900	0.37	12
		CQB32-20-110F	* 3.6	13	35	2.8	32×20	2900	0.55	18
		CQB40-25-120F	* 6.3	15	42	2.8	40×25	2900	0.75	35
		CQB40-25-125F	* 6.3	20	43	2.8	40×25	2900	1.1	38
		CQB40-40-125F	* 6.5	17.5	42	3.5	40×40	2900	1.1	42
		CQB40-25-160F	* 6.5	32	42	2.5	40×25	2900	4	70
		CQB50-32-125F	* 12	20	42	3.2	50×32	2900	1.5	45
CQB50-32-160F	* 12.5	32	39	3.2	50×32	2900	4	80		
Short stent type	短支架型	CQB65-50-125FD	* 25	20	61	3.5	65×50	2900	4	90
		CQB65-50-150FD	* 20	25	48	3.5	65×50	2900	4	100
		CQB65-50-160FD	* 17.5	32	40	3.5	65×50	2900	4	100
		CQB65-50-180FD	* 17.5	36	28	3.5	65×50	2900	5.5	120
		CQB80-65-160FD	* 50	32	60	4	80×65	2900	11	245
		CQB100-80-125FD	* 100	20	65	4.8	100×80	2900	11	220
Long support type	长支架型	CQB100-80-160FD	* 100	32	65	4.8	100×80	2900	18.5	220
		CQB50-32-160FL	* 12.5	32	39	3.2	50×32	2900	4	140
		CQB50-32-200FL	* 12.5	50	31	3.2	50×32	2900	7.5	210
		CQB65-50-160FL	* 25	32	51	3.5	65×50	2900	7.5	210
		CQB65-40-200FL	* 25	50	48	3.5	65×40	2900	11	250
		CQB80-65-160FL	* 50	32	60	4	80×65	2900	11	285
		CQB80-50-200FL	* 50	50	60	4	80×50	2900	18.5	320
CQB100-80-160FL	* 100	32	58	4.8	100×80	2900	18.5	350		

## 五、TMC 不锈钢磁力泵 TMC Stainless Steel Magnetic Pump

### 1、用途 Application

碱液、苯、醚、醇、醛、烷、氨水、氢氧化钠及医药中间体等，适用于有毒有害、易燃易爆和贵重液体的输送。

Alkali solutions, benzene, ether, alcohol, aldehyde, alkane, ammonia water, sodium hydroxide, and pharmaceutical intermediates are suitable for the transportation of toxic, hazardous, flammable, explosive, and valuable liquids.

### 2、概述 Summary

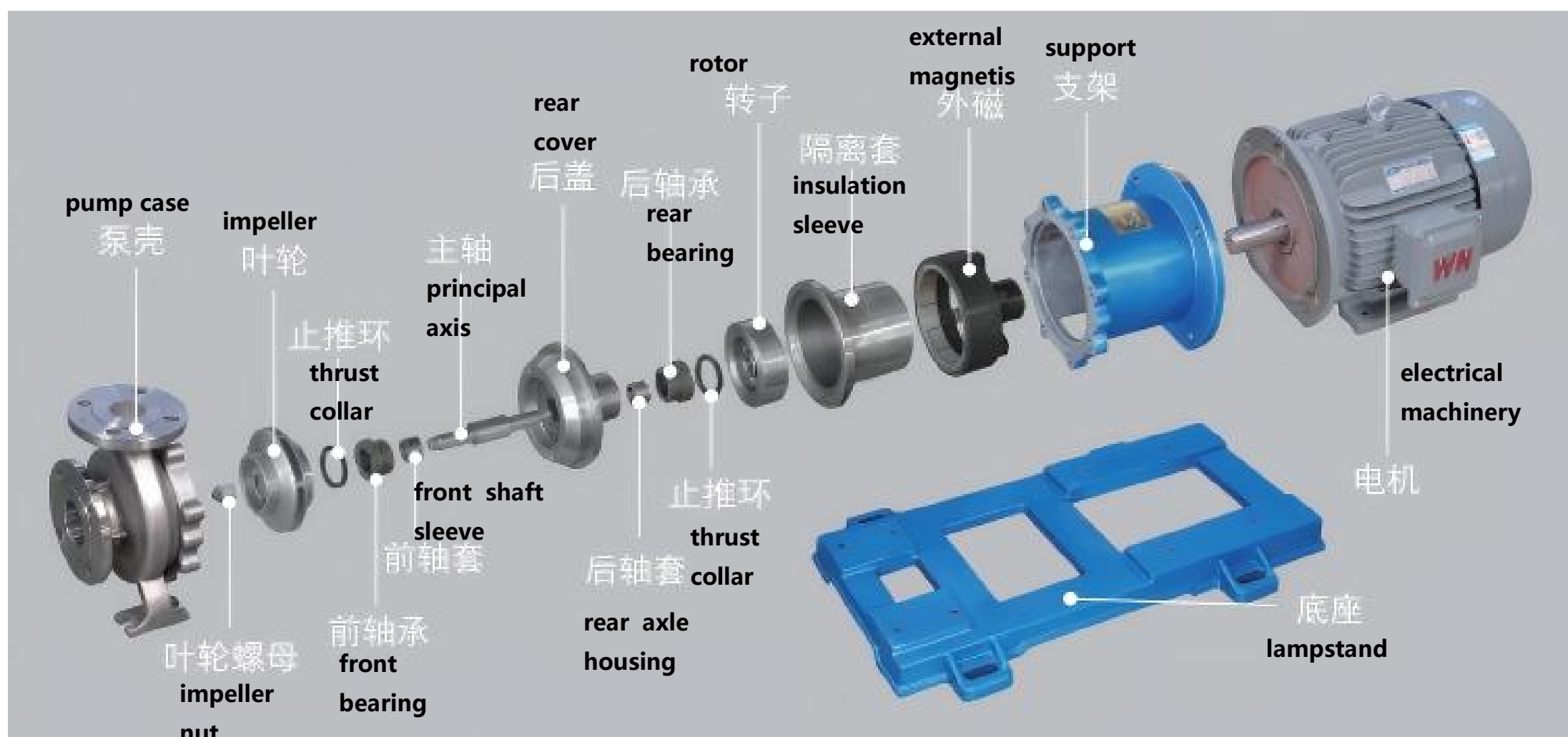
- 泵材质 Pump material : 不锈钢 Stainless steel(304、316L 等)
- 流量 Flow : 1m<sup>3</sup>/h~400m<sup>3</sup>/h
- 扬程 Head : 5m~80m
- 功率 Power : 1.1kW~55kW
- 使用温度 Temperature : -20°C~120°C , 可定制 120°C~250°C 及蒸汽保温型  
Customizable temperature range: 120°C to 250°C with steam insulation type.



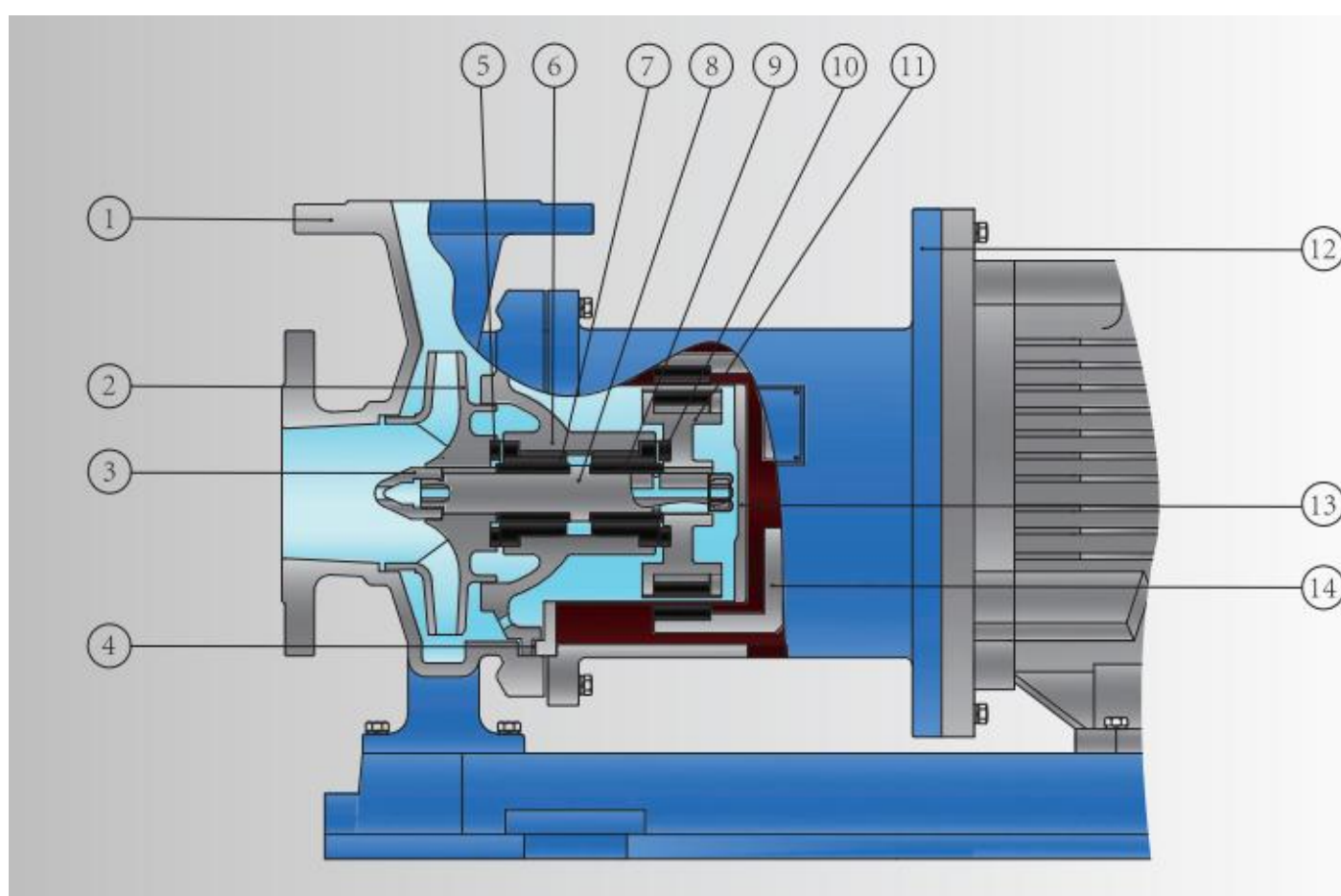
### 3、设计特点 Design feature

- 全新的水力模型设计，全系列硅溶胶酸洗工艺，保证了流道的光洁度，泵的效率提高 3%~6%。
- The innovative hydraulic model design and full-series silica sol pickling process ensure smooth flow channels, resulting in 3% to 6% increased pump efficiency.
- 对磨件标配:滑动轴承采用改性 PEEK，兼顾了润滑性和承载力。轴套采用硬质合金，具有极高的硬度和光洁度。
- Standard components for wear parts: The sliding bearings utilize modified PEEK, balancing lubrication performance and load-bearing capacity. The bushings are made of cemented carbide, featuring exceptional hardness and surface finish.
- 隔离套采用激光焊接工艺，焊疤均做探伤处理，TMC 系列隔离套耐受压力极限为 1.6MPa。
- The isolation sleeves are manufactured using laser welding technology, with all weld scars undergoing flaw detection treatment. The TMC series isolation sleeves have a pressure tolerance limit of 1.6 MPa.

#### 4、零件图 Part drawing



#### 5、结构图 Structural diagram



1	泵壳 pump case	8	泵轴 pump spindle
2	叶轮 impeller	9	轴套 axle sleeve
3	叶轮螺母 impeller nut	10	止推环 thrust ring
4	密封圈 gasket ring	11	内磁 internal magnetism
5	动环 rotating seal ring	12	连接架 connector
6	泵盖 pump bonnet	13	隔离套 insulation sleeve
7	轴承 bearing	14	外磁 external magnetism

## 6、型号意义 Model designation

### TMC 80-65-160

TMC.....不锈钢磁力驱动泵  
 80.....进口口径(mm) Import diameter (mm)  
 65.....出口口径(mm) Export diameter (mm)  
 160.....叶轮名义直径(mm) Nominal diameter of impeller (mm)

## 7、性能参数 Performance parameter



NO.	Type	Flow	Head	EFF	NPSHr	Aperture	Speed	Power	Weight
序号	型号	流量 m <sup>3</sup> /h	扬程 m	效率 %	汽蚀余量 m	进口·出口 mm	转速 r/min	电机功率 kW	重量 Kg
1	TMC25-25-125	* 1.8	20	24	3	25×25	2900	1.5	54
2	TMC32-25-125	2.5	22	22	3	32×25	2900	2.2	60
		* 3.6	20	24					
3	TMC32-25-160	4	20	24	3	32×25	2900	3	66
		* 2.5	35	18					
		* 3.6	32	22					
4	TMC40-25-125	4	32	24	3	40×25	2900	2.2	61
		* 4.5	23	24					
		* 6.3	20	30					
5	TMC40-25-160	8.5	20	38	3	40×25	2900	3	67
		* 4.5	34	33					
		* 6.3	32	35					
6	TMC40-25-200	8.5	32	41	3	40×25	2900	5.5	97
		* 4.5	52	22					
		* 6.3	50	30					
7	TMC40-32-250	8.5	50	34	3	40×32	2900	11	210
		* 4.5	84	15					
		* 6.3	80	17					
8	TMC50-32-125	10	80	22	3.2	50×32	2900	2.2	68
		* 12.5	20	35					
		16	20	38					
9	TMC50-32-160	9	21	32	3.2	50×32	2900	4	74
		* 12.5	33	35					
		16	31	41					
10	TMC50-32-200	9	54	27	3.2	50×32	2900	7.5	105
		* 12.5	50	33					
		16	50	35					
11	TMC50-32-250	9	83	24	3.2	50×32	2900	11	235
		* 12.5	80	28					
		16	80	33					
12	TMC65-50-125	17	22	42	3.5	65×50	2900	4	83
		* 25	20	51					
		30	18	53					
13	TMC65-50-160	17	33	40	3.5	65×50	2900	5.5	125
		* 25	32	48					
		35	28	53					

NO.	Type	Flow	Head	EFF	NPSHr	Aperture	Speed	Power	Weight
序号	型号	流量 m <sup>3</sup> /h	扬程 m	效率 %	汽蚀余量 m	进口·出口 mm	转速 r/min	电机功率 kW	重量 Kg
14	TMC65-40-200	17	55	37	3.5	65×40	2900	11	220
		* 25	50	42				15	
		35	50	47					
15	TMC65-40-250	17	84	32	3.5	65×40	2900	18.5	280
		* 25	80	40					
		35	80	47					
16	TMC80-65-125	36	24	47	4.0	80×65	2900	7.5	130
		* 50	20	56					
		60	19	59					
17	TMC80-65-160	36	35	44	4.0	80×65	2900	11	230
		* 50	32	53				15	
		60	32	56					
18	TMC80-50-200	36	55	45	4.0	80×50	2900	15	270
		* 50	50	55				18.5	
		60	50	60					
19	TMC80-50-250	36	85	40	4.0	80×50	2900	30	380
		* 50	80	45				37	
		60	78	47					
20	TMC100-80-125	70	23	48	4.5	100×80	2900	11	260
		* 100	20	55					
		105	17	55					
21	TMC100-80-160	70	36	50	4.5	100×80	2900	18.5	290
		* 100	32	52				22	
		120	32	59				310	
22	TMC100-65-200	70	48	54	4.5	100×65	2900	30	340
		* 100	50	62					
		120	50	65					
23	TMC100-65-250	70	83	48	5.0	100×65	2900	45	430
		* 100	80	52					
		120	78	56					
24	TMC125-100-160	130	35	48	5.0	125×100	2900	37	380
		* 160	32	50					
		170	32	51					
25	TMC125-100-200	130	57	54	5.8	125×100	2900	55	520
		* 200	50	62					
		210	46	65					
26	TMC125-100-250	180	82	53	5.8	125×100	2900	90	860
		* 200	80	55					
		220	78	59					
27	TMC150-125-250	130	23	57	2.6	150×125	1450	22	390
		* 200	20	64					
		230	16	65					
28	TMC150-125-315	* 200	32	61	3.2	150×125	1450	37	380

## 六、CQ 不锈钢磁力泵 CQ Stainless Steel Magnetic Pump

### 1、用途 Application

轻型不锈钢磁力泵，-20°C 到 90°C 环境下输送各类有机溶剂、易燃易爆的介质。

A lightweight stainless steel magnetic pump designed for transporting various organic solvents and flammable/explosive media in environments ranging from -20°C to 90°C.

### 2、概述 Summary

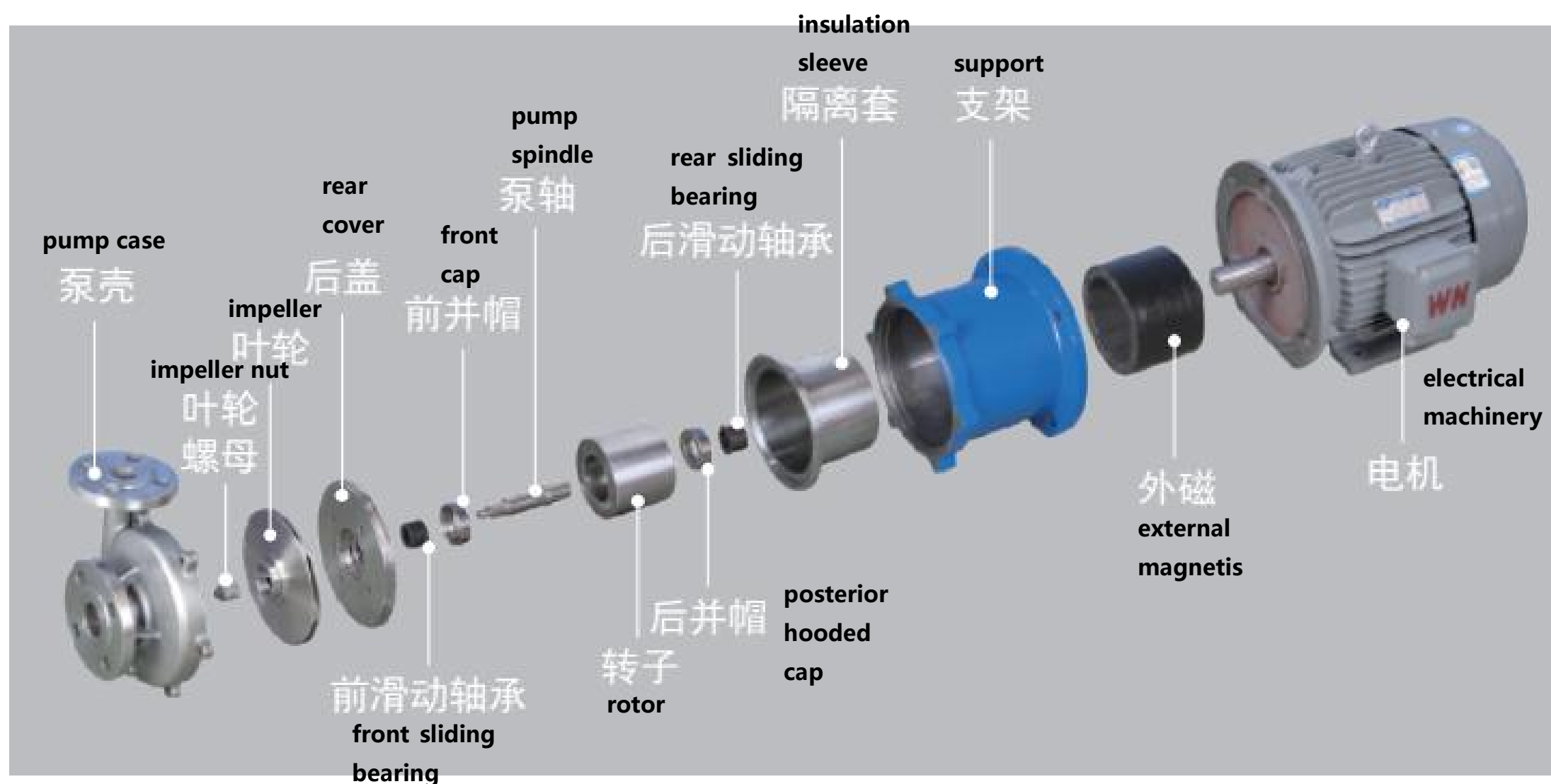
- 泵材质 Pump material : 不锈钢 Stainless steel(304、316L)
- 流量 Flow : 1.2m<sup>3</sup>/h~60m<sup>3</sup>/h
- 扬程 Head : 5m~50m
- 功率 Power : 0.12kW~18.5kW
- 使用温度 Temperature : -20°C~90°C



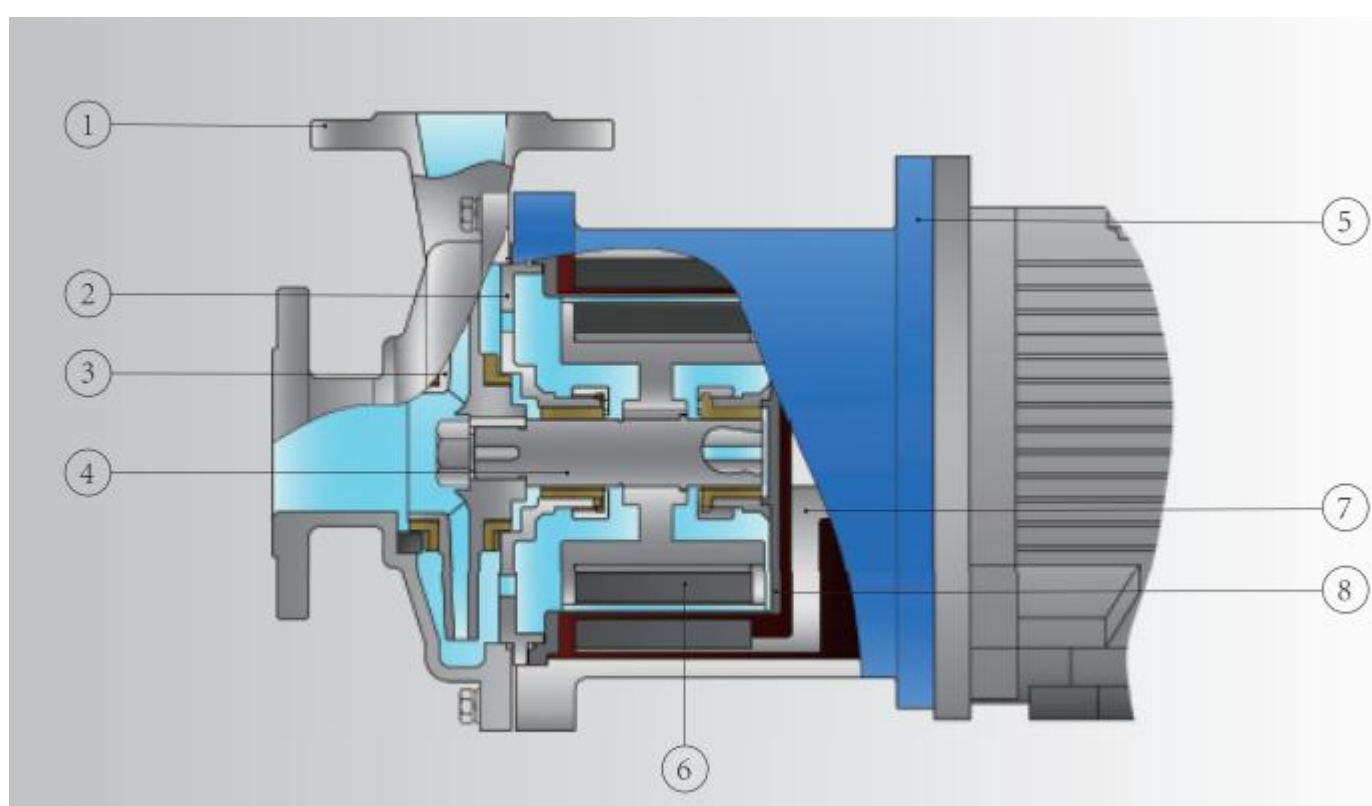
### 3、设计特点 Design feature

- 过流部件全部不锈钢，结构简单、体积小、价格低，是应用最早、最广泛的无泄漏不锈钢磁力泵。
- All flow components are made of stainless steel, featuring a simple structure, compact size, and low cost, making it the earliest and most widely used leak-proof stainless steel magnetic pump.
- 耐温极限为 100°C，超过 100°C 会消磁。
- The temperature resistance limit is 100°C; exceeding this temperature will cause demagnetization.

#### 4、零件图 Part drawing



#### 5、结构图 Structural diagram



1	泵壳总成 pump housing assembly	5	支架 support
2	泵盖总成 pump cover assembly	6	外磁总成 external magnetic assembly
3	叶轮总成 impeller Assembly	7	转子总成 rotor assembly
4	主轴 principal axis	8	隔套总成 cuff assembly

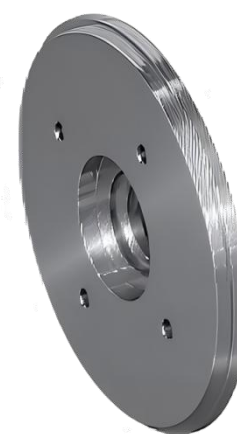
## 6、型号意义 Model designation

**50CQ-25**

50.....进口口径 Import caliber(mm)  
 CQ.....不锈钢磁力泵 Stainless Steel Magnetic Pump  
 25.....扬程 Head(m)

## 7、性能参数 Performance parameter

NO.	Type	Flow	Head	EFF	NPSHr	Aperture	Speed	Power	Weight
序号	型号	流量 m <sup>3</sup> /h	扬程 m	效率 %	汽蚀余量 m	进口·出口 mm	转速 r/min	电机功率 kW	重量 Kg
1	16CQ-5	* 1.2	5	20	1.5	16×12	2900	0.12	12
2	16CQ-8	* 1.8	8	21	1.5	16×12	2900	0.18	15
3	20CQ-12	* 3	12	21	2.0	20×12	2900	0.37	22
4	25CQ-15	* 5.4	15	25	2.7	25×20	2900	1.1	30
5	32CQ-15	* 6.5	15	28	3.0	32×25	2900	1.1	35
6	32CQ-25	* 4.8	25	23	3.0	32×25	2900	1.1	35
7	32CQ-32	2	32	20	2.5	32×25	2900	2.2	38
		* 3.6	32	24					
		5	30	27					
8	40CQ-20	6.3	21	20	3.0	40×32	2900	2.2	42
		* 10	20	22					
		11	20	22					
9	40CQ-32	6.3	33	24	3.0	40×32	2900	4	65
		* 11.5	32	25					
		13	30	27					
10	40CQ-40	* 6.3	40	21	3.0	40×32	2900	4	68
11	50CQ-25	9	27	30	3.0	50×40	2900	4	68
		* 14.4	25	27					
		17	25	34					
12	50CQ-32	9	33	28	3.0	50×40	2900	4	70
		* 13.2	32	29					
		17	29	30					
13	50CQ-50	6.3	50	27	3.0	50×32	2900	5.5	108
		* 7.8	50	28					
		10	47	33					
14	65CQ-25	15	26	35	3.0	65×50	2900	4	110
		* 16.8	25	36					
		20	23	38					
15	65CQ-32	17	33	48	3.0	65×50	2900	5.5	115
		* 25	32	50					
		30	28	53					
16	80CQ-32	35	33	48	3.0	80×65	2900	11	155
		* 50	32	52					
		60	29	55					



不锈钢后盖  
 Stainless steel rear cover



不锈钢泵轴  
 Stainless steel pump shaft



不锈钢叶轮  
 stainless steel impeller