

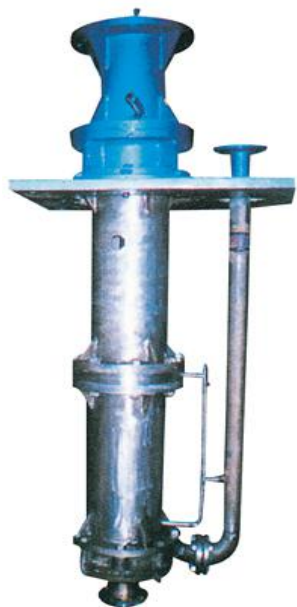
液 下 泵 样 本

辰禹（重庆）流体设备有限公司

联系电话：15922628171

部分图片展示 Part of the picture display

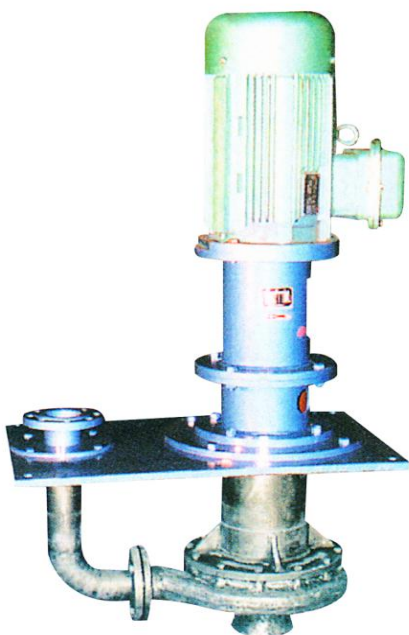
LFR 高温液下化工泵



LFWD 型多吸头液下污水泵



LFR 不锈钢液下酸洗泵



LF 不锈钢化工液下泵



目 录

CONTENTS

1、概 述 Summary.....	1
2、适用范围 Scope of application.....	1
3、性能范围 Performance range.....	2
4、输送介质 Conveying medium.....	2
5、技术特点 Technical characteristics.....	错误! 未定义书签。
6、结构特点 Structural characteristics.....	3
7、型号意义 Model meaning.....	5
8、结构类型 structure type.....	6
9、冲洗方案 Flushing scheme.....	12
10、冷却方案 Cooling scheme.....	13
11、部分业绩表 Partial performance table.....	27
12、选型数据表 Type selection data table.....	29

概 述

LF (R) 系列液下泵是我公司经过二十年多年研制和开发的成熟产品，包容三个方面的专利技术。一方面采用柔性支撑专利技术，使泵的具有更好的稳定性，即使下导轴承被磨损还能继续运转，极大的减少了泵的检修停机时间；另一方面采用低振耐磨专利技术，使泵振动低耐磨性能好，使用周期长；再一方面采用的联轴器是我公司的专利技术—BJR 型便拆式联轴器，弹性体使用寿命长、更换特别方便。该泵广泛用于冶金、矿山、石油化工、电站、工厂、市政给排水、酸洗、涂装等场合，特别适合于绝对不允许泄漏的场合。输送介质温度为-40℃~650℃。

Summary

LF (R) series of underwater pump is a mature product developed and developed over twenty years by our company, and contains three patent technologies. Using a flexible support patent technology, which has better stability of the pump, even if the lower guide bearing wear can continue to operate, greatly reduces pump maintenance downtime; on the other hand, the low vibration resistant patent technology, the pump vibration and low resistance, long service life; the coupling is used again the patent technology - BJR detachable coupling of our company, elastomer, long service life, convenient replacement. The pump is widely used in metallurgy, mining, petrochemical, power plants, factories, municipal water supply and drainage, pickling, painting and other occasions, and is especially suitable for occasions where no leakage is allowed. The temperature of the conveying medium is -40 C ~ 650 C.

适用范围

- 炼油厂、石油化学工业、煤加工工业、铝加工工业和低温工程。
- 化学工业、造纸、纸浆业、制糖业和普通流程工业。
- 供水厂、海水淡化厂
- 供暖和空气调节系统
- 发电厂、电站辅助系统、循环冷却系统
- 环境、涂装、酸洗
- 船舶及海上工程等。

Scope of application

Oil refineries, petroleum chemical industry, coal processing industry, aluminum processing industry and low temperature engineering.

Chemical industry, paper making, pulp industry, sugar industry and general process industry.

Water supply plant, desalination plant

Heating and air conditioning system

The power plant, the auxiliary system of the power station, the circulating cooling system

Environment, coating, acid pickling

Ship and marine engineering, etc.

性能范围

流量: $Q = 0.1 \sim 2390 \text{ m}^3/\text{h}$

扬程: $H = 5 \sim 240\text{m}$

配套功率: $N = 0.37 \sim 450\text{kw}$

转速: $n = 1450 \text{ r}/\text{min}$ 或 $2950 \text{ r}/\text{min}$

泵排出口直径: $25 \sim 400 \text{ mm}$

Performance range

Flow: $Q = 0.1 \sim 2390 \text{ m}^3/\text{h}$

Head: $H = 5 \sim 240\text{m}$

Supporting power: $N = 0.37 \sim 450\text{kw}$

Speed: $n = 1450 \text{ r}/\text{min}$ or $2950 \text{ r}/\text{min}$

Outlet diameter of pump: $25 \sim 400\text{mm}$

输送介质

- ◆ 各种贵重液体;
- ◆ 各种浓度和温度的硫酸、硝酸、盐酸、磷酸等无机酸和有机酸;
- ◆ 氢氧化钠、氢氧化钾等碱性溶液;
- ◆ 盐溶液;
- ◆ 液态石油化工产品, 有机化合物以及其他具有腐蚀性的原料和产品;
- ◆ 熔盐及高温液态金属;
- ◆ 含固体颗粒的污水、废油和清水;
- ◆ 含固体颗粒的氧化铁皮的循环水;

Conveying medium

There is a variety of valuable liquid;

The various temperature and concentration of sulfuric acid, nitric acid, hydrochloric acid, phosphoric acid and other inorganic acids and organic acids;

The sodium hydroxide, potassium hydroxide alkaline solution;

The salt solution;

The liquid petroleum chemical products, organic compounds and other corrosive materials and products;

The molten salt and high temperature liquid metal;

The solid particles in the sewage, waste oil and water;

The circulating water of iron oxide - containing solid particles;

结构特点

- ◆ 不用引水（灌水）就能启动，是一种无泄漏泵
- ◆ 为立式液下泵，外形美观，直接安装在被输送介质的储存器（坑、井、罐）上，无额外占地面积，从而降低了基建投入。
- ◆ 具有冷却，润滑，保温和冲洗四套辅助系统方案可供选择，大大减少泵发生故障的概率。
- ◆ 轴采用柔性支撑，增加了轴运转的刚度。
- ◆ 叶轮螺母具有防松结构。
- ◆ 输送高温介质时出液管上具有伸缩管，可以防止热膨胀引起应力。
- ◆ 泵与电机间采用便拆式联轴器。
- ◆ 泵液下长度大于 3.0m 时，泵轴采用多节结构，轴间联接采用联轴套。
- ◆ 当输送介质有颗粒时采用了固液分离技术

Structural characteristics

There is no water (irrigation) can start, is a kind of non leakage pump

There is a vertical submerged pump, beautiful appearance, directly installed in the reservoir of medium to be delivered (pits, wells, tank), no additional area, thereby reducing the capital investment.

That is cooling, lubrication, thermal insulation and flushing four sets of auxiliary system options, greatly reduce the probability of pump failure.

The shaft adopts flexible support, increase the shaft stiffness.

The impeller nut anti loose structure.

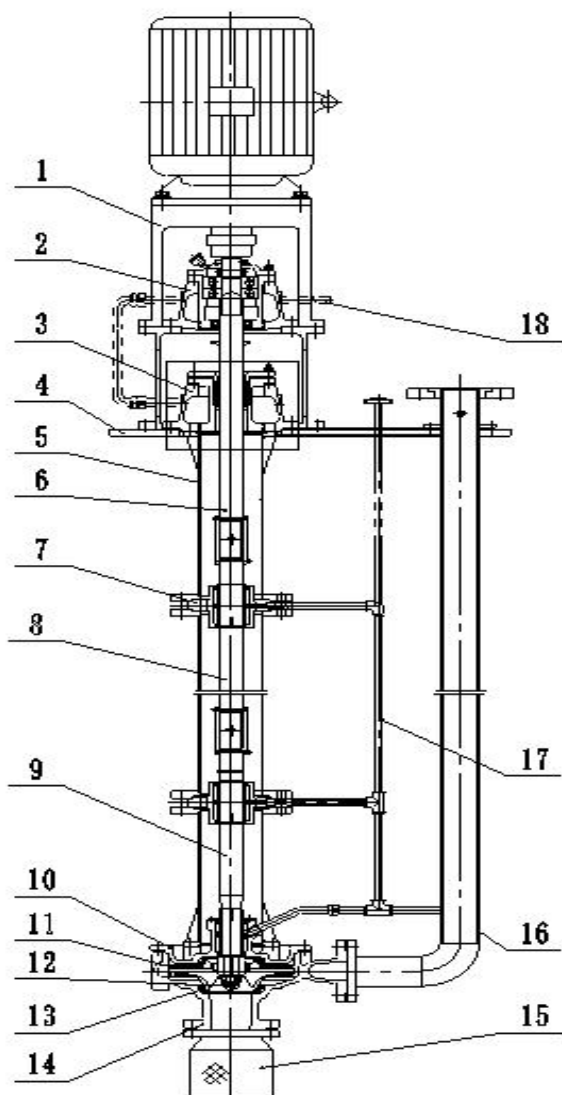
The heat transfer medium when the liquid outlet pipe has the telescopic tube, can prevent thermal expansion caused by stress.

The pump and motor with detachable coupling.

The liquid pump length is greater than 3.0m, the pump shaft adopts a multi section structure, connected by shaft coupling sleeve.

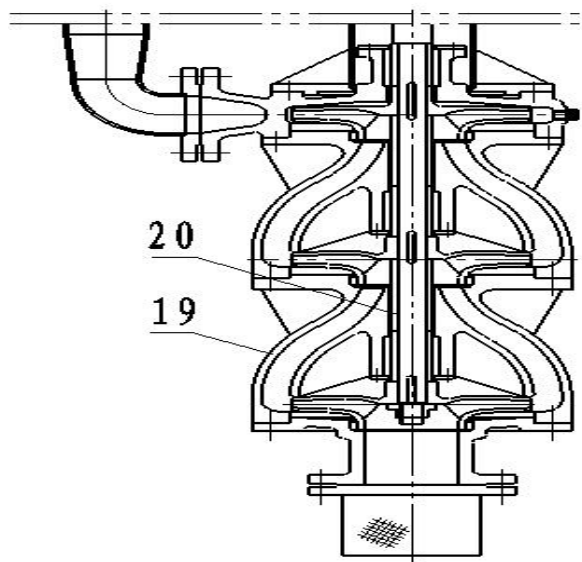
The use of solid-liquid separation technique when the particle transport medium

产品结构 product mix

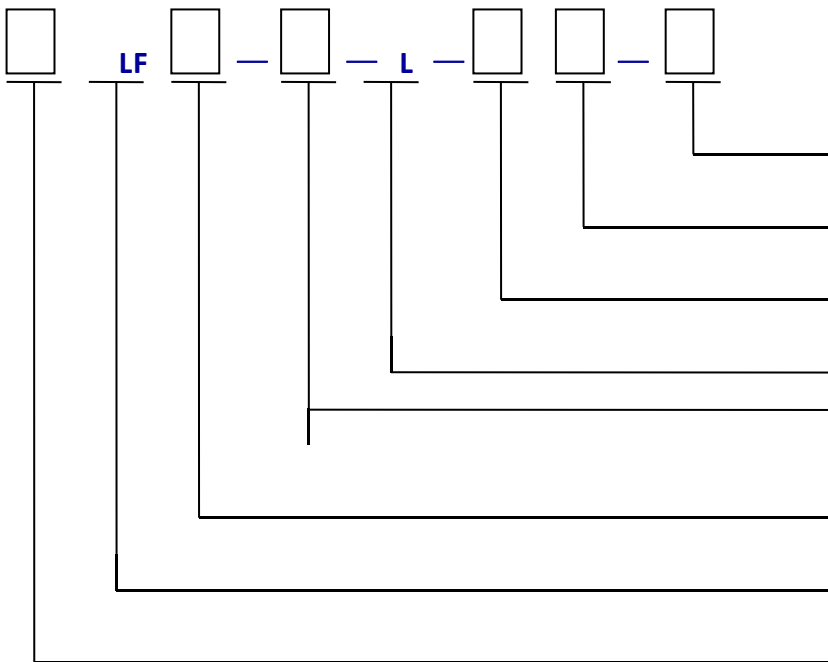


1	电机支架	Motorsupport
2	轴承部件	Bearing parts
3	密封部件	Seal parts
4	支撑板	Support plate
5	护管	Protective tube
6	传动轴	Transmission shaft
7	导轴承部件	Guide bearing parts
8	中间轴	Intermediate shaft
9	叶轮轴	Impeller shaft
10	泵盖	Pump cover
11	叶轮	Impeller
12	叶轮螺母	Impeller nut
13	密封环	Seal ring
14	泵体	Pump body
15	滤网	Filter
16	排液管	Drain pipe
17	冲洗水管	Flushing water pipe
18	冷却水管	Cooling water pipe
19	导叶	guide vane
20	轴套	Axle sleeve

多级结构 Multilevel structure



型号意义 Model meaning



- 材质代号 (1 至 30)
- Material code (1 to 30)
- 填料腔带冷却 Q (无则省略)
- Packing cavity zone cooling Q
- 填料密封代号 T (无则省略)
- Packing seal code T (omitted)
- 液下长度 L (m) [多节: L1×N]
- Under liquid length L (m) [multiple sections: L1 x N]
- 扬程 H (m) [多级 H1×Z]
- Head H (m) [multilevel H1 x Z]
- 结构类型 structure type
- 液下泵 Underwater pump
- 泵排出口直径 mm Pump outlet diameter mm

例如: For example

50LFR-20×2-3-TQ- 2

- | | |
|------------------|-------------------------------------------------------------|
| 50—表示泵排出口直径 50mm | 50--The outlet diameter of the pump is 50mm |
| R—表示输送介质为高温型 | R--The conveying medium is high temperature type |
| 20—表示单级扬程为 20m; | 20--It means that the single stage lift is 20m; |
| 2—表示叶轮级数 2 级; | 2--It represents the 2 stage of the impeller series. |
| 3—表示液下长度为 3m; | 3--The length of the liquid is 3M |
| T—表示该泵带填料密封; | T--Indicate the packing seal of the pump |
| Q—表示该泵填料密封带冷却; | Q--It indicates that the packing seal of the pump is cooled |
| 2—表示该泵材质为 ZG35; | 2----It means that the material of the pump is ZG35 |

结构类型 structure type

代号 Code	W	P	N	J	R	Y	B
名称 Name	污水 sewage	给排水 Water supply and drainage	盐液 saline solution	碱液 Lye	高温 high temperature	油品 Oils	防爆型 Explosion-pr oof type

材料选用表 Material selection table

材质代号	牌号	代号	适用介质
1	HT250		清水、热水、弱碱
2	ZG35		清水、热水、弱碱
3	1Cr18Ni9Ti	18-8	碱液、醋酸、稀硝酸
4	0Cr18Ni9	304	稀硝酸，有机酸。
5	0Cr18Ni12Mo2	316	稀硝酸、磷酸、有机酸。
6	00Cr18Ni9	304L	稀硝酸，有机酸。抗晶间腐蚀。
7	00Cr18Ni12Mo2	316L	稀硝酸、磷酸、有机酸、抗晶间腐蚀。
8	F30%CrMo	Cr30	是含固量达 35%的腐蚀性介质，如磷酸萃取料浆等类似腐蚀磨蚀性介质。
9	00Cr20Ni25Mo4	UB6	
10	00Cr14Ni14Si4	C4	含一定数量的 Cl、F、SO ₄ ²⁻ 磷酸、硫酸及高温醋酸，抗点蚀和晶间腐蚀。
11	0Cr12Ni25Mo3Cu3Si2 Nb	941	全浓度硝酸、特别适用浓硝酸，是目前浓硝酸用钢综合性最好的铸材。
12	00Cr10Ni20Mo1.5Si6C u	SS920	高温浓硫酸，t≤130℃，浓度 93-98%。
13	0Cr21Ni32Mo2Cu3	20#合金	高温浓硫酸，t≤130℃，浓度 40%左右。
14	Z180C13	DF2	含固量达 70%磨蚀性介质。
15	0Cr26Ni5Mo2Cu3	CD-4MCu	含固稀硫酸、磷酸、耐磨、耐蚀。
16	0Cr24Ni20Mo2Cu3	K 合金	≤60℃各种浓度的硫酸。
17	00Cr25Ni6Mo2	MM-4	硝酸磷肥专用钢。
18	0Cr18Ni12Mo2Ti	Mo2Ti	稀硝酸，磷酸，有机酸。
19	0Cr20Ni25Mo5Cu2	904	70℃一下各种浓度硫酸，抗晶间腐蚀。
20	0Cr30Ni42Mo3Cu2	804	烧碱蒸发及 904 仍不抗蚀等。
21	0Cr20Ni42Mo3Cu2	824	904 仍不抗蚀介质。
22	0Cr18Ni5Mo5	NH55	海水。
23	0Cr20Ni33Mo3Cu3Nb	20Cb3	各种浓度的硫酸腐蚀。

辰禹（重庆）流体设备有限公司 --液下泵 Underwater pump

24	0Cr24Ni33Mo2.5Cu3Ti	3#4#	含 20%固相的稀硫酸磨损腐蚀。
25	0Cr16Ni4Cu3Nb	CB-7Cu	砂浆腐蚀、钾肥生产时卤水的磨、腐蚀。
26	00Cr30Ni40Mo4Cu3	Lewmet55	125°C高温发烟硫酸腐蚀。
27	00Ni65Cu28	Monel	氟氟酸、硅氟酸、高温烧碱。
28	00Ni65Mo28	哈氏 B	全浓度盐酸。
29	塑料 FEP	F46	各种酸、碱、盐、氧化剂等介质。
30	UHMWPE		80°C一下含悬浮固体颗粒的酸、碱、盐介质。

Material code	Grade	Code	Applicable medium
1	HT250		Water, hot water, weak alkali
2	ZG35		Water, hot water, weak alkali
3	1Cr18Ni9Ti	18-8	Lye, acetic acid and dilute nitric acid
4	0Cr18Ni9	304	Dilute nitric acid, organic acid.
5	0Cr18Ni12Mo2	316	Dilute nitric acid, phosphoric acid, organic acid
6	00Cr18Ni9	304L	Dilute nitric acid, organic acid. Intergranular corrosion
7	00Cr18Ni12Mo2	316L	Dilute nitric acid, phosphoric acid, organic acid, intercrystalline corrosion.
8	F30%CrMo	Cr30	It is a corrosive medium with 35% solid content, such as phosphoric acid extraction slurry and other corrosive and abrasive media.
9	00Cr20Ni25Mo4	UB6	
10	00Cr14Ni14Si4	C4	A certain amount of Cl, F, SO4 ²⁻ phosphoric acid, sulfuric acid and high temperature acetic acid, resistance to pitting and intergranular corrosion
11	0Cr12Ni25Mo3Cu3Si2N b	941	Full concentration of nitric acid, especially suitable for concentrated nitric acid, is the best comprehensive steel for concentrated nitric acid at present
12	00Cr10Ni20Mo1.5Si6Cu	SS920	High temperature concentrated sulfuric acid, t is less than or equal to 130 DEG C, the concentration of 93-98%。
13	0Cr21Ni32Mo2Cu3	20#alloy	High temperature concentrated sulfuric acid, t is less than or equal to 130 DEG C, the concentration of about 40%.
14	Z180C13	DF2	The solid content is up to 70% abrasiveness medium.
15	0Cr26Ni5Mo2Cu3	CD-4MC u	It contains solid dilute sulfuric acid, phosphoric acid, wear-resistant and corrosion resistant.
16	0Cr24Ni20Mo2Cu3	K alloy	≤60°C A variety of concentrations of sulphuric acid
17	00Cr25Ni6Mo2	MM-4	Special steel for nitrate phosphate fertilizer
18	0Cr18Ni12Mo2Ti	Mo2Ti	Dilute nitric acid, phosphoric acid, organic acid

19	0Cr20Ni25Mo5Cu2	904	70°CThe following various concentrations of sulfuric acid, intercrystalline corrosion。
20	0Cr30Ni42Mo3Cu2	804	Caustic soda evaporation and 904 still not resist corrosion.
21	0Cr20Ni42Mo3Cu2	824	904 still does not resist corrosion medium
22	0Cr18Ni5Mo5	NH55	The sea water
23	0Cr20Ni33Mo3Cu3Nb	20Cb3	Corrosion of various concentrations of sulphuric acid.
24	0Cr24Ni33Mo2.5Cu3Ti	3#4#	The corrosion of dilute sulfuric acid containing 20% solid phase.
25	0Cr16Ni4Cu3Nb	CB-7Cu	The grinding and corrosion of the brine during the mortar corrosion and the production of potash fertilizer.
26	00Cr30Ni40Mo4Cu3	Lewmet5 5	At 125 C, high temperature and sulphuric acid corrosion.
27	00Ni65Cu28	Monel	Fluorofluoric acid, silicone fluoric acid, high temperature caustic soda.
28	00Ni65Mo28	Hardy B	Total concentration of hydrochloric acid。
29	Plastic FEP	F46	Various kinds of acid, alkali, salt, oxidant and other medium.
30	UHMWPE		Acid, alkali and salt medium containing suspended solid particles below 80 C。

说明： 介质为氧化铝是易选用 ZGCr27， CD4MCu;介质为强酸强碱且温度低于 200°C时， 易采用 ZGCr27， 316L； 介质为强酸强碱且温度高于 200°C时， 易采用高硅铸铁。

Explanation: the medium is alumina, which is easy to choose ZGCr27 and CD4MCu. When the medium is strong acid and strong base, and the temperature is lower than 200 degrees, it is easy to use ZGCr27/316L. When the medium is strong acid and strong base, and the temperature is higher than 200 degrees, it is easy to use high silicon cast iron.

产品分类 Product classification

LF 型液下泵结构图 (图 1)

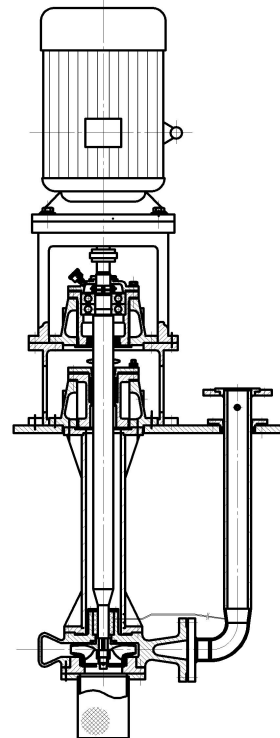
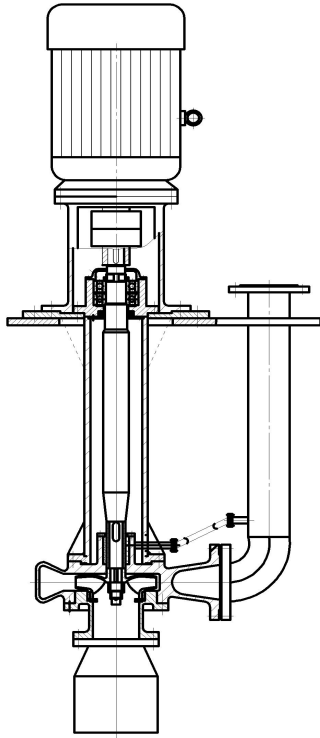
LFR 型高温液下泵结构图 (图 2)

LF Underwater pump structure diagram

LFR type high temperature liquid pump structure diagram

(Figure 1)

(Figure 2)



●适用于输送含有固体颗粒浓度 $\leq 15\%$ ，直径 $< 6\text{mm}$ 或易结晶，易挥发，有毒，易燃易爆的液体介质；

●介质温度为 $-10^{\circ}\text{C} \sim +80^{\circ}\text{C}$ 。

●Suitable for conveying solid particles concentration is less than 15%, less than 6mm in diameter or easy to be crystallized, volatile, toxic, flammable and explosive liquid medium;

●Medium temperature- $10^{\circ}\text{C} \sim +80^{\circ}\text{C}$ 。

●适用于输送含有固体颗粒浓度 $\leq 15\%$ ，直径 $< 6\text{mm}$ 或易结晶，易挥发，有毒，易燃易爆的液体介质；

●介质温度为 $-40^{\circ}\text{C} \sim +550^{\circ}\text{C}$ 。

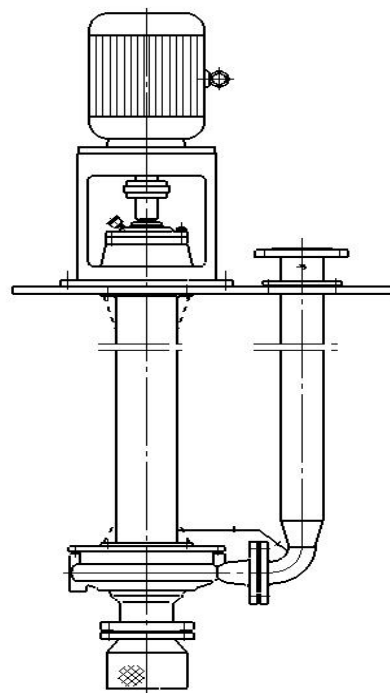
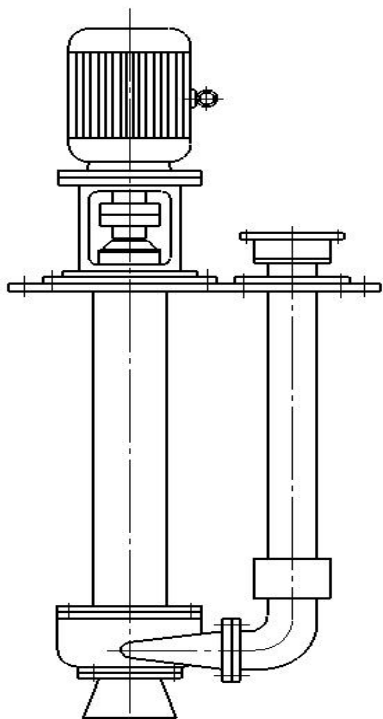
●Suitable for conveying solid particles concentration is less than 15%, less than 6mm in diameter or easy to be crystallized, volatile, toxic, flammable and explosive liquid medium;●Medium temperature- $40^{\circ}\text{C} \sim +550^{\circ}\text{C}$ 。

LFF 型氟塑料液下泵结构图（图 3）

LFW 型污水液下泵结构图（图 4）

LFF Pump structure diagram of fluoroplastics(Figure 3)

LFW Structure diagram of sewage pump(Figure 4)



- 适用于输送强酸、强碱、无固体颗粒的液体介质；
- 介质温度为-10°C~+80°C。

- 输送固体颗粒浓度<20%，直径<100mm 的污水；
- 介质温度为-10°C~+80°C。

●It is suitable for transporting liquid medium with strong acid, strong alkali and no solid particles.

●The sewage that carries the solid particle concentration less than 20%, the diameter < 100mm;

●Medium temperature-10°C~+80°C.

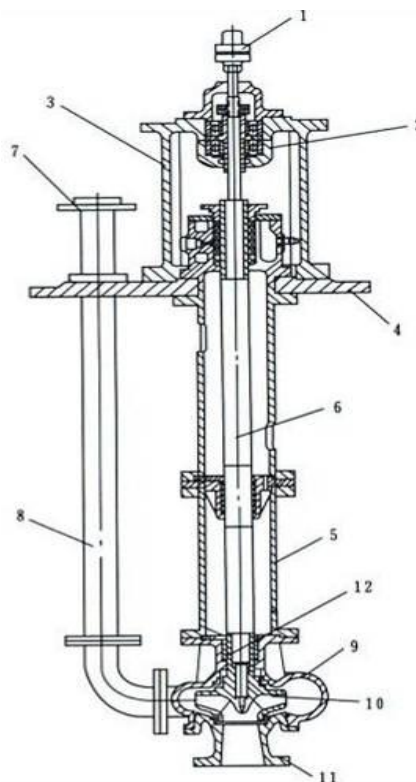
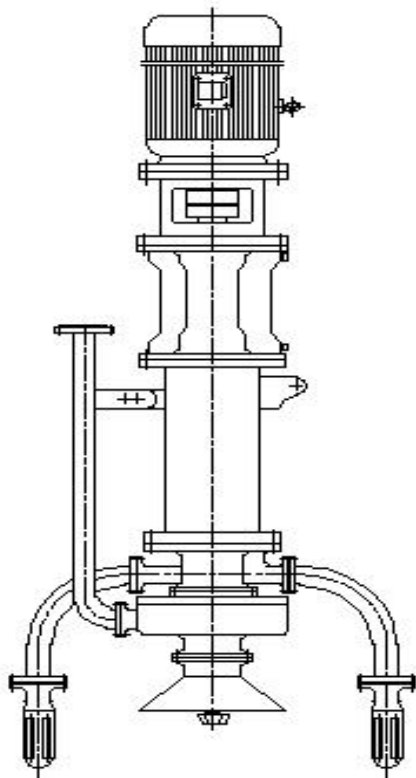
●Medium temperature-10°C~+80°C.

LFWD 型多吸头污水液下泵结构图（图 5）

LFB 型防爆液下泵（图 6）

LFWD Pump structure diagram of multi suction head sewage (Figure 5)

LFB Explosion-proof underwater pump (Figure 6)



- 适用于输送固体颗粒浓度 $<30\sim 45\%$ ，直径 $<100\text{mm}$ 的污水；

- 介质温度为 $-10^{\circ}\text{C}\sim +80^{\circ}\text{C}$ 。

- It is suitable for transporting sewage with the concentration of solid particles $< 30\sim 45\%$ and the diameter $< 100\text{mm}$;

- Medium temperature $-10^{\circ}\text{C}\sim +80^{\circ}\text{C}$ 。

- 适用于输送油、苯等易燃易爆液体介质的

- 工作温度可达 500°C

- Suitable for flammable and explosive liquid medium such as oil and benzene

- working temperature 500°C

密封方案 Seal scheme

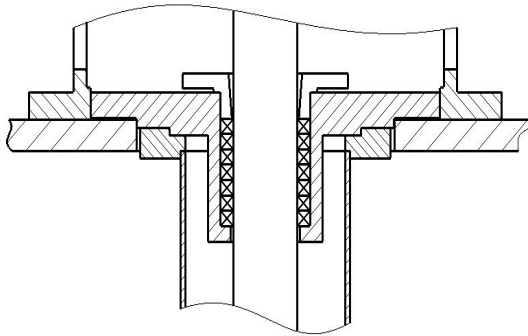
填料密封无冷却方案（T）：

No cooling scheme for packing seal (T):

此方案适用于输送各种易燃、易爆、易挥发的化工腐蚀性介质； This scheme is suitable for transporting all kinds of inflammable, explosive and volatile chemical corrosive medium;

介质温度 $-20^{\circ}C \sim 150^{\circ}C$ ，特殊需要时可为 $-50^{\circ}C \sim 150^{\circ}C$ 。

Medium temperature $-20^{\circ}C \sim 150^{\circ}C$ ， when special needs can be $-50^{\circ}C \sim 150^{\circ}C$



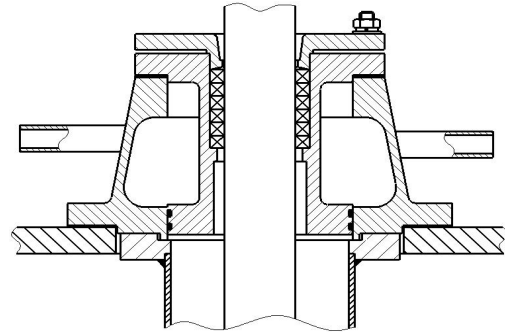
填料密封带冷却方案（TQ）：

Packing seal belt cooling scheme (TQ):

此方案适用于输送各种易燃、易爆、易挥发的化工腐蚀性介质； This scheme is suitable for transporting all kinds of inflammable, explosive and volatile chemical corrosive medium;

介质温度； $150^{\circ}C \sim 550^{\circ}C$

Medium temperature $150^{\circ}C \sim 550^{\circ}C$



冲洗方案 Flushing scheme

引入清洁的液体冲洗导轴承，保证了泵的安全运转，对于不同的介质，有两种方式可以选择。

The introduction of clean liquid to flush the guide bearings to ensure the safe operation of the pump, for different media, there are two ways to choose.

自冲洗 Self flushing

当泵送介质为清洁介质时，采用此方式进行冲洗。从出口法兰引一管路，使冲洗液流向各个导轴承，润滑了导轴承，带走了磨擦副产生的热量，起到了降温的作用。

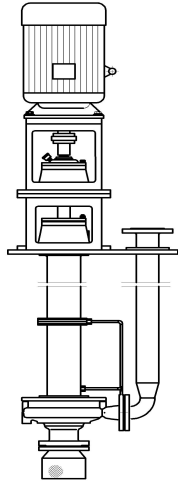
When the pump medium is a clean medium, it is washed by this way. A pipeline is drawn from the outlet flange, so that the washing liquid flows to all the guide bearings, lubricated the guide bearing, takes away the heat generated by the friction pairs, and plays the role of cooling down.

外冲洗 External flushing

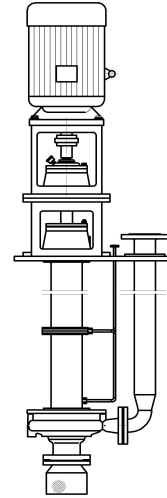
当泵送介质为内含较小颗粒介质时，采用此方式进行冲洗。从外界接一管路，引入清洁的冲洗液冲洗各个导轴承，润滑了导轴承，带走了磨擦副产生的热量，起到了降温的作用。同时，避免固体颗粒进入摩擦副中。

When the pump medium contains small particle medium, it is washed by this way. A clean irrigation fluid is used to flush all guide bearings from outside to a pipeline, lubricate the guide bearings, and take away the heat generated by the friction pairs, which plays a role of cooling down. At the same time, the solid particles are avoided into the friction pair.

自冲洗 Self flushing



外冲洗 External flushing



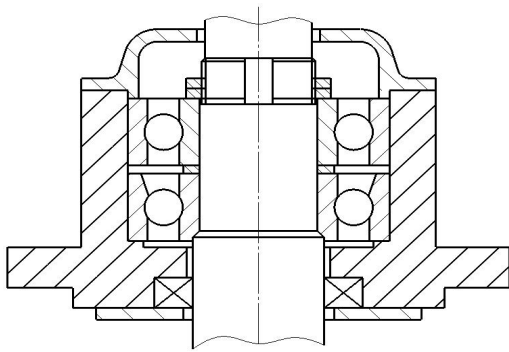
冷却方案 Cooling scheme

API 方案 R1 轴承箱采用自然冷却

API scheme R1 bearing box adopts natural cooling

API 方案 R2 填料箱采用自然冷却

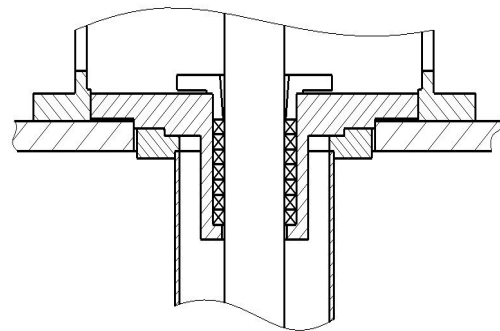
API scheme R2 packing box adopts natural cooling



API 方案 D

冷却水通往轴承箱急冷或保温

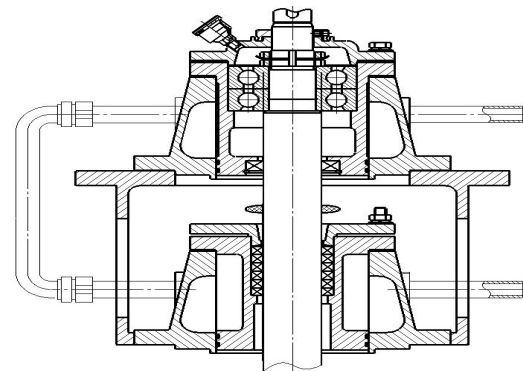
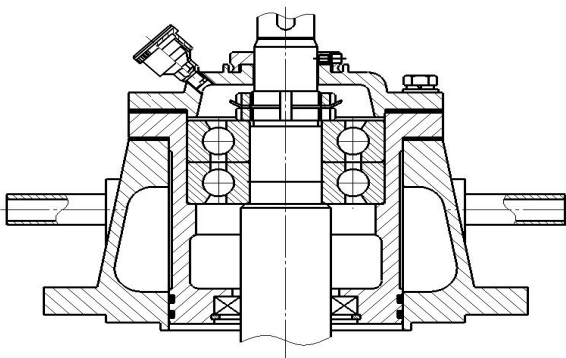
API scheme D cooling water leads to the chilling or heat preservation of the bearing box



API 方案 K

冷却水通往填料箱同时通往轴承箱急冷或保温

API scheme K cooling water leads to packing box and lead to chilling or insulation of bearing box



性能参数表
Performance parameter table

型号 Model	额定转速 Rated speed n=2950r/min							额定转速 Rated speed n=1450r/min							
	叶轮形式	流量 Q m ³ /h	扬程 H m	效率 η %	轴承架号	电机功率 KW			流量 Q m ³ /h	扬程 H m	效率 η %	轴承架号	电机功率 KW		
						比重 proportion							比重 proportion		
						1	1.35	1.84					1	1.35	1.84
25LF-20	A	4	20	39	30	1.5	1.5	2.2	2	5	3 5	30	1.1	1.1	1.1
	B	2.5	15			1.5	1.5	2.2	1.2	3.7			1.1	1.1	1.1
	C	1	10			1.1	1.5	2.2	0.5	2.5			1.1	1.1	1.1
	D	0.5	7			1.1	1.5	1.5	0.25	1.7			1.1	1.1	1.1
25LF-32	A	4	32	34	30	1.5	2.2	3	2	8	3 0	30	1.1	1.1	1.1
	B	2.5	25			1.5	1.5	2.2	1.2	6			1.1	1.1	1.1
	C	1	16			1.5	1.5	2.2	0.5	4			1.1	1.1	1.1
	D	0.5	11			1.1	1.5	1.5	0.25	2.5			1.1	1.1	1.1
25LF-50	A	4	50	30	30	3	4	5.5	2	12	2 7	30	1.1	1.5	1.5
	B	2.5	38			2.2	3	4	1.2	9			1.1	1.5	1.5
	C	1	25			1.5	2.2	3	0.5	6			1.1	1.1	1.1
	D	0.5	17			1.5	1.5	2.2	0.25	4			1.1	1.1	1.1
32LF-20	A	6	20	45	30	2.2	3	4	3	5	4 0	30	1.1	1.1	1.1
	B	5	18			1.5	1.5	2.2	2.5	4.5			1.1	1.1	1.1
	C	4	15			1.5	1.5	2.2	2	3.7			1.1	1.1	1.1
	D	3	10			1.1	1.5	1.5	1.5	2.5			1.1	1.1	1.1
32LF-32	A	6	32	43	30	3	4	5.5	3	8	3 8	30	1.1	1.1	1.1
	B	5	28			2.2	3	4	2.5	7			1.1	1.1	1.1
	C	4	24			2.2	3	4	2	6			1.1	1.1	1.1
	D	3	20			1.5	2.2	3	1.5	5			1.1	1.1	1.1
32LF-50	A	6	50	40	30	5.5	7.5	11	3	12.5	3 7	30	1.1	1.5	1.5
	B	5	48			5.5	7.5	11	2.5	12			1.1	1.5	1.5
	C	4	45			4	5.5	7.5	2	11			1.1	1.1	1.5
	D	3	40			4	5.5	7.5	1.5	10			1.1	1.1	1.5
32LF-80	A	6	80	40	30	7.5	11	15	3	20	3 7	30	1.5	1.5	2.2
	B	5	73			7.5	11	15	2.5	18			1.1	1.5	2.2
	C	4	65			5.5	7.5	11	2	16			1.1	1.1	1.5
	D	3	56			5.5	7.5	11	1.5	14			1.1	1.1	1.5
40LF-20	A	12.5	20	62	30	2.2	3	4	6.3	5	5 7	30	1.1	1.1	1.1
	B	11.9	18			1.5	2.2	3	6	4.2			1.1	1.1	1.1
	C	10	16			1.5	2.2	3	5	4			1.1	1.1	1.1
	D	6	10			1.1	1.5	2.2	3	2.5			1.1	1.1	1.1

辰禹(重庆)流体设备有限公司 --液下泵 Underwater pump

型 号 Model	额定转速 Rated speed n=2950r/min								额定转速 Rated speed n=1450r/min									
	叶 轮 形 式	流 量 Q m ³ /h	扬 程 H m	效 率 η %	轴 承 架 号	电机功率 KW			流 量 Q m ³ /h	扬 程 H m	效 率 η %	轴 承 架 号	电机功率 KW					
						比重 proportion							比重 proportion					
						1	1.35	1.84					1	1.35	1.84			
40LF-32	A	12.5	32	55	30	3	4	5.5	6.3	8	50	30	1.1	1.1	1.1			
	B	11.7	28			3	3	4	5.8	7			1.1	1.1	1.1			
	C	10.8	24			2.2	3	4	5.4	6			1.1	1.1	1.1			
	D	8	20			2.2	3	4	4	5			1.1	1.1	1.1			
40LF-8*2	A									6.3			16			1.5	2.2	3
40LF-8*3	A									6.3			24			1.5	2.2	3
40LF-8*4	A									6.3			32			2.2	3	4
40LF-8*5	A									6.3			40			3	4	4
40LF-8*6	A									6.3			48			3	4	5.5
40LF-8*7	A									6.3			56			3	4	5.5
40LF-8*8	A									6.3			64			4	5.5	7.5
40LF-8*9	A									6.3			72			5.5	7.5	11
40LF-50	A	12.5	50	42	40	5.5	7.5	11	6	12	38	40	1.1	1.1	1.5			
	B	10	42			4	5.5	7.5	4.8	11			1.1	1.1	1.1			
	C	9	36			3	4	5.5	4.5	9			1.1	1.1	1.1			
	D	7	28			2.2	3	4	3.8	7			1.1	1.1	1.1			
40LF-80	A	12.5	80	38	40	11	15	18.5	6.3	20	32	40	1.5	2.2	3			
	B	11.7	70			11	15	18.5	5.9	17			1.5	2.2	3			
	C	11	62			7.5	11	15	5.5	13			1.1	1.1	1.5			
	D	8	48			5.5	7.5	11	4	12			1.1	1.1	1.5			
40LF-125	A	21	124	28	40	30	37	45	10	32	25	40	5.5	7.5	7.5			
	B	18	116			30	37	45	9	29			4	5.5	7.5			
	C	17	99			22	30	37	8	25			4	5.5	5.5			
	D	15	87			22	30	37	7.5	22			3	4	5.5			
	E	14	76			18.5	22	30	7	20			2.2	3	4			
	F	13	64			7.5	15	22	6	16			2.2	2.2	3			
50LF-20	A	25	20	69	40	3	4	5.5	12.5	5	64	40	1.1	1.1	1.1			
	B	22.4	16			2.2	3	4	11	4			1.1	1.1	1.1			
	C	14	12			2.2	2.2	3	7	3			1.1	1.1	1.1			
	D	10	8			2.2	2.2	3	5	4			1.1	1.1	1.1			
50LF-32	A	25	32	62	40	5.5	7.5	11	14	8	59	40	1.1	1.1	1.5			
	B	23	29			5.5	7.5	11	13	7			1.1	1.1	1.5			
	C	20	22			4	5.5	5.5	11	5			1.1	1.1	1.1			
	D	18	16			2.2	3	4	9	4			1.1	1.1	1.1			
50LF-50	A	25	50	58	40	11	15	18.5	14	13	55	40	1.5	2.2	3			
	B	24	45			7.5	11	15	12	12			1.5	1.5	2.2			
	C	22.7	41			7.5	11	15	11	10			1.1	1.1	1.5			

辰禹(重庆)流体设备有限公司 --液下泵 Underwater pump

型 号 Model	额定转速 Rated speed n=2950r/min								额定转速 Rated speed n=1450r/min										
	叶 轮 形 式	流 量 Q m ³ /h	扬 程 H m	效 率 η %	轴 承 架 号	电机功率 KW			流 量 Q m ³ /h	扬 程 H m	效 率 η %	轴 承 架 号	电机功率 KW						
						比重 proportion							比重 proportion						
						1	1.35	1.84					1	1.35	1.84				
	D	16	23			4	5.5	7.5	9	7			1.1	1.1	1.1				
50LF-12*2	A								12.5	24			3	4	5.5				
50LF-12*3	A								12.5	36			3	4	5.5				
50LF-12*4	A								12.5	48			4	5.5	7.5				
50LF-12*5	A								12.5	60			5.5	7.5	11				
50LF-12*6	A								12.5	72			5.5	7.5	11				
50LF-12*7	A								12.5	84			7.5	11	15				
50LF-12*8	A								12.5	96			7.5	11	15				
50LF-12*9	A								12.5	108			11	15	18.5				
50LF-80	A	25	80	53	40	15	22	30	15	19.6	4 9	40	3	4	5.5				
	B	23	71			15	22	30	13.5	18			2.2	3	4				
	C	22	62			11	15	22	12	15			1.5	2.2	3				
	D	20	55			7.5	11	15	10	11			1.1	1.5	2.2				
50LF-125	A	25	125	46	40	30	37	55	21	29	4 2	40	5.5	7.5	11				
	B	23	109			30	37	55	20	26			5.5	7.5	11				
	C	22	95			22	30	45	17	20			4	5.5	7.5				
	D	20	78			18.5	30	45	14	15			4	5.5	7.5				
65LF-20	A	50	20	75	40	5.5	7.5	11	25	5	7 1	40	1.1	1.1	1.5				
	B	45.3	16			4	5.5	7.5	22.6	4			1.1	1.1	1.1				
	C	30	12			4	5.5	7.5	15	3			1.1	1.1	1.1				
	D	20	8			3	4	5.5	10	2			1.1	1.1	1.1				
65LF-32	A	50	32	71	40	11	15	15	25	8	6 9	30	1.5	2.2	2.2				
	B	45	28			7.5	11	15	22	7			1.5	1.5	2.2				
	C	38	22			5.5	7.5	11	19	5			1.1	1.1	1.5				
	D	30	18			3	4	5.5	16	4			1.1	1.1	1.1				
65LF-50	A	50	50	68	40	15	22	30	30	13	6 5	40	3	3	4				
	B	45	41			11	15	22	25	12			2.2	3	4				
	C	42	38			11	15	22	25	9			1.5	2.2	3				
	D	35	28			7.5	11	15	20	7			1.5	1.5	2.2				
65LF-12*2	A												25	24			4	5.5	7.5
65LF-12*3	A												25	36			5.5	7.5	11
65LF-12*4	A												25	48			7.5	11	15
65LF-12*5	A												25	60			11	15	18.5
65LF-12*6	A												25	72			11	15	22
65LF-12*7	A												25	84			15	18.5	22
65LF-12*8	A												25	96			15	18.5	22
65LF-12*9	A												25	108			18.5	22	30

辰禹(重庆)流体设备有限公司 --液下泵 Underwater pump

型号 Model	额定转速 Rated speed n=2950r/min								额定转速 Rated speed n=1450r/min							
	叶轮形式	流量 Q m ³ /h	扬程 H m	效率 η %	轴承架号	电机功率 KW			流量 Q m ³ /h	扬程 H m	效率 η %	轴承架号	电机功率 KW			
						比重 proportion							比重 proportion			
						1	1.35	1.84					1	1.35	1.84	
65LF-80	A	50	80	65	40	30	37	55	35	20	6 2	40	4	5.5	7.5	
	B	45	70			22	30	45	32	18			4	5.5	7.5	
	C	44	60			18.5	30	37	30	15			3	4	5.5	
	D	40	55			15	18.5	22	26	11			2.2	3	3	
65LF-125	A	50	125	56	50	45	55	90	25	32	5 3	50	7.5	11	15	
	B	46	110			37	55	75	23	28			7.5	11	15	
	C	44	97			30	37	55	22	24			5.5	7.5	11	
	D	40	85			22	30	37	20	21			4	4	5.5	
65LF-190	A	82	190	48	50	110	160	200	41	48	4 5	50	15	22	30	
	B	78	175			90	132	160	39	43			15	18.5	22	
	C	70	140			75	90	132	35	34			11	15	18.5	
	D	60	102			45	75	90	30	25			7.5	11	15	
65LF-240	A	93	240	45	50	132	160	200	47	60	4 0	50	18.5	22	37	
	B	87	233			132	160	200	43.5	58			18.5	22	37	
	C	75	195			110	132	160	37.5	48			15	18.5	22	
	D	56	141			55	75	110	28	35			7.5	11	15	
80LF-20	A	100	20	78	50	11	15	15	50	5	7 5	50	2.2	3	4	
	B	91.8	16.9			7.5	11	15	45	4			2.2	2.2	3	
	C	70	12			5.5	7.5	11	35	3			1.5	1.5	2.2	
	D	65	8			4	5.5	7.5	32	2			1.5	1.5	2.2	
80LF-32	A	90	32	78	50	15	18.5	30	47	8	7 6	50	2.2	3	4	
	B	85	28			11	15	18.5	42	7			2.2	2.2	3	
	C	75	21			11	11	15	38	5.5			1.5	2.2	2.2	
	D	66	16			5.5	7.5	11	34	4			1.1	1.1	1.5	
80LF-35	A								60	35	6 5	55	15	18.5	22	
80LF-50	A	104	50	76	50	30	37	45	51	13.5	7 4	50	4	5.5	7.5	
	B	95	48			22	30	37	47	12			3	4	5.5	
	C	83	38			15	22	30	41	9.5			2.2	3	4	
	D	70	32			11	15	22	36	7.5			2.2	2.2	3	
80LF-80	A	127	80	74	50	45	75	90	64	20	7 0	50	7.5	11	15	
	B	120	76			45	55	75	60	19			7.5	7.5	11	
	C	105	59			30	45	55	52	14.5			4	5.5	7.5	
	D	87	45			22	30	37	46	11			3	4	5.5	
80LF-20*2									50	40			11	15	18.5	
80LF-20*3									50	60			15	18.5	22	
80LF-20*4									50	80			22	30	37	

辰禹(重庆)流体设备有限公司 --液下泵 Underwater pump

型 号 Model	额定转速 Rated speed n=2950r/min							额定转速 Rated speed n=1450r/min								
	叶 轮 形 式	流 量 Q m ³ /h	扬 程 H m	效 率 η %	轴 承 架 号	电机功率 KW			流 量 Q m ³ /h	扬 程 H m	效 率 η %	轴 承 架 号	电机功率 KW			
						比 重 proportion							比 重 proportion			
						1	1.35	1.84					1	1.35	1.84	
80LF-20*5								50	100			30	37	45		
80LF-20*6								50	120			30	37	45		
80LF-20*7								50	140			37	45	55		
80LF-20*8								50	160			45	55	75		
80LF-20*9								50	180			45	55	75		
80LF-125	A	100	125	65	50	75	95	50	32	6	50	11	15	18.5		
	B	93.5	109			55	75	46.5	28			11	11	15		
	C	88	97			55	75	90	44			24	7.5	11	15	
	D	83	86			45	55	75	45			18	5.5	7.5	11	
100LF-8	A							78	8	8	50	4	4	5.5		
	B							73	6			3	3	4		
	C							63	4.3			2.2	2.2	3		
	D							55	3			1.5	1.5	2.2		
100LF-12	A							95	12	8	50	5.5	7.5	11		
	B							90	10.5			5.5	7.5	11		
	C							80	8.5			4	5.5	7.5		
	D							70	6			3	3	4		
100LF-20	A							115	20	8	50	11	15	18.5		
	B							118	18			11	11	15		
	C							100	14			7.5	11	11		
	D							90	10			5.5	7.5	7.5		
100LF-20*2	A							100	40	8	50	22	30	37		
100LF-20*3	A							100	60			30	37	45		
100LF-20*4	A							100	80			37	45	55		
100LF-20*5	A							100	100			45	55	75		
100LF-20*6	A							100	120			55	75	90		
100LF-20*7	A							100	140			75	75	90		
100LF-20*8	A							100	160			75	90	110		
100LF-20*9	A							100	180			90	110	132		
100LF-32	A							120	32			7	50	22	30	37
	B							119	29					18.5	22	30
	C								104	24	15			18.5	22	
	D								86	17.5	11			11	15	
100LF-45	A							85	45	6	50	22	30	45		
	B							80	42			18.5	30	37		
	C							65	33			15	18.5	30		
	D							53	25			11	15	18.5		

辰禹(重庆)流体设备有限公司 --液下泵 Underwater pump

型 号 Model	额定转速 Rated speed n=2950r/min							额定转速 Rated speed n=1450r/min							
	叶 轮 形 式	流 量 Q m ³ /h	扬 程 H m	效 率 η %	轴 承 架 号	电机功率 KW			流 量 Q m ³ /h	扬 程 H m	效 率 η %	轴 承 架 号	电机功率 KW		
						比 重 proportion							比 重 proportion		
						1	1.35	1.84					1	1.35	1.84
100LF-50	A							150	50	70	70	37	45	75	
	B							145	44			30	45	55	
	C							130	36			22	30	45	
	D							115	26			18.5	22	30	
100LF-60	A							100	60	57	50	37	45	55	
	B							95	55.5			30	37	45	
	C							87	46			30	30	37	
	D							70	32			22	30	37	
100LF-64	A							160	64	68	70	55	75	90	
	B							150	60			45	55	75	
	C							130	50			37	45	55	
	D							100	36			22	30	37	
150LF-10	A							160	10	80	70	11	11	15	
	B							152	9.5			7.5	11	15	
	C							140	7			5.5	7.5	11	
	D							123	5			4	4	5.5	
150LF-15	A							173	15			15	18.5	22	
150LF-15*2	A							173	30			30	37	45	
150LF-15*3	A							173	45			37	45	55	
150LF-15*4	A							173	60			55	75	90	
150LF-15*5	A							173	75			75	90	110	
150LF-15*6	A							173	90			75	90	100	
150LF-15*7	A							173	105			110	132	160	
150LF-20	A							195	20			82	70	22	22
	B							180	16	18.5	18.5			22	
	C							160	11.5	11	11			15	
150LF-32	A							220	32	81	70	37	45	55	
	B							240	30			30	37	55	
	C							180	24			22	30	37	
	D							150	17			18.5	18.5	22	
150LF-50	A							255	50	77	70	55	75	110	
	B							245	48			55	75	90	
	C							225	38			37	55	75	
	D							200	28			30	37	55	
150LF-75	A							180	75	70	70	75	90	110	
	B							167	68			55	75	110	
	C							142	53			37	55	75	

辰禹(重庆)流体设备有限公司 --液下泵 Underwater pump

型号 Model	额定转速 Rated speed n=2950r/min							额定转速 Rated speed n=1450r/min							
	叶轮形式	流量 Q m ³ /h	扬程 H m	效率 η %	轴承架号	电机功率 KW			流量 Q m ³ /h	扬程 H m	效率 η %	轴承架号	电机功率 KW		
						比重 proportion							比重 proportion		
						1	1.35	1.84					1	1.35	1.84
	D								120	42			30	37	55
200LF-12	A								400	12	8 4	70	18.5	22	30
	B								380	11			15	18.5	22
	C								340	9			11	15	18.5
200LF-20	A								400	20	8 3	70	37	45	55
	B								305	17			22	30	45
	C								290	16			22	30	37
	D								260	12			18.5	18.5	30
	E								240	8			15	15	15
200LF-30	A								288	30	7 8	70	37	55	75
	B								260	25			37	55	75
	C								240	30			37	55	75
200LF-32	A								400	32	8 2	70	55	75	90
	B								374	28			45	55	75
	C								360	26			37	45	55
200LF-50	A								426	50	8 1	70	90	110	160
	B								410	47			75	110	132
	C								370	36.5			55	75	110
	D								332	27			45	55	75
200LF-75	A								290	75	7 4	70	110	132	200
	B								284	72			110	132	160
	C								235	59			75	90	110
	D								200	48			45	75	75
200LF-100	A								330	100	6 6	70	160	200	250
	B								318	95			132	160	200
	C								255	80			90	132	160
	D								190	63			75	90	110
200LF-115	A								350	115	6 3	70	250	355	500
	B								338	105			200	280	400
	C								270	82			132	160	280
	D								220	60			75	110	160
250LF-27	A								540	27	8 6	70	55	75	110
	B								528	25			55	75	90
	C								480	19			37	55	75
	D								434	13			30	37	45
250LF-85	A								480	85	7 8	70	160		
	B								470	79			160		

辰禹(重庆)流体设备有限公司 --液下泵 Underwater pump

型号 Model	额定转速 Rated speed n=2950r/min							额定转速 Rated speed n=1450r/min							
	叶轮形式	流量 Q m ³ /h	扬程 H m	效率 η %	轴承架号	电机功率 KW			流量 Q m ³ /h	扬程 H m	效率 η %	轴承架号	电机功率 KW		
						比重 proportion							比重 proportion		
						1	1.35	1.84					1	1.35	1.84
C								400	63			110	160		
	D							330	48			75	90	132	
250LF-100	A							520	100	7	70	220	280		
	B							510	98			200	280		
	C							435	81			160	200	280	
	D							350	62			110	132	200	
250LF-132	A							578	132	7	70	315			
	B							550	125			280			
	C							468	100			200	280	355	
	D							372	75			132	200	250	
300LF-50	A							655	50	8	70	132	160		
	B							630	46			110	160		
	C							565	36			75	110	160	
	D							500	24			55	75	90	
300LF-80	A							800	80	8	85	250	315		
	B							770	76			220	315		
	C							700	58			160	220	280	
	D							630	42			110	160	200	
300LF-100	A							860	100	8	85	280			
	B							830	96			315			
	C							760	78			250	315		
	D							665	57			160	220	280	
型号	额定转速 n=1450r/min							额定转速 n=960r/min							
	叶轮形式	流量 Q m ³ /h	扬程 H m	效率 η %	轴承架号	电机功率 KW			流量 Q m ³ /h	扬程 H m	效率 η %	轴承架号	电机功率 KW		
						比重							比重		
						1	1.35	1.84					1	1.35	1.84
300LF-125	A	855	125	80	100	450			570	55	79	100	110	160	200
	B	816	119			400			544	52			110	132	185
	C	720	96			280			480	42			75	110	132
	D	625	71			185	220	315	415	31			45	75	90
350LF-50	A	1050	48	87	85				700	21	86	85	55	75	90
	B	1010	45			160			670	20			55	75	90
	C	900	34			132	160		600	15			37	45	55
	D	780	26			90	132	160	520	11			22	30	37
350LF-80	A	1240	78	88	85	355			826	34	86	85	110	132	185

辰禹(重庆)流体设备有限公司 --液下泵 Underwater pump

型 号 Model	额定转速 Rated speed n=2950r/min								额定转速 Rated speed n=1450r/min							
	叶 轮 形 式	流 量 Q m ³ /h	扬 程 H m	效 率 η %	轴 承 架 号	电机功率 KW			流 量 Q m ³ /h	扬 程 H m	效 率 η %	轴 承 架 号	电机功率 KW			
						比重 proportion							比重 proportion			
						1	1.35	1.84					1	1.35	1.84	
	B	1170	75			315			780	33			90	132	160	
	C	1015	57			220	315		670	25			75	90	110	
	D	870	42			160	200	280	580	18			37	55	75	
350LF-100	A	1340	100	87	100	560			893	44	85	100	160	185	280	
	B	1280	97			500			853	43			132	185	280	
	C	1140	77			355			760	34			90	132	160	
	D	950	56			220			630	24			55	75	110	
350LF-130	A	1450	130	85	100	800			960	57	84	100	200	250	355	
	B	1375	125			710			916	55			185	250	355	
	C	1170	100			500			780	44			132	160	220	
	D	950	75			280			630	33			75	110	132	
400LF-23	A								1750	23	86	120	160	220	315	
400LF-75	A	1870	75	88	100	560			1240	32	87	100	160	200	280	
	B	1800	70			500			1200	30			132	160	220	
	C	1520	52			315			1013	23			90	110	160	
	D	1300	38			200			865	16			55	75	90	
400LF-100	A	2040	100	88	100	800			1360	43	87	100	220	280	400	
	B	1950	91			710			1300	40			185	250	355	
	C	1760	74			560			1173	33			132	185	250	
	D	1500	54			315			1000	24			90	110	160	
400LF-125	A	2390	125	88	120	1250			1594	55	87	120	315	450	560	
	B	2280	117			1120			1520	52			280	400	560	
	C	1960	95			800			1306	42			200	280	355	
	D	1610	70			450			1073	31			132	160	220	

附加 Additional:

液下泵标准长度值表 Standard length value table for underwater pump:

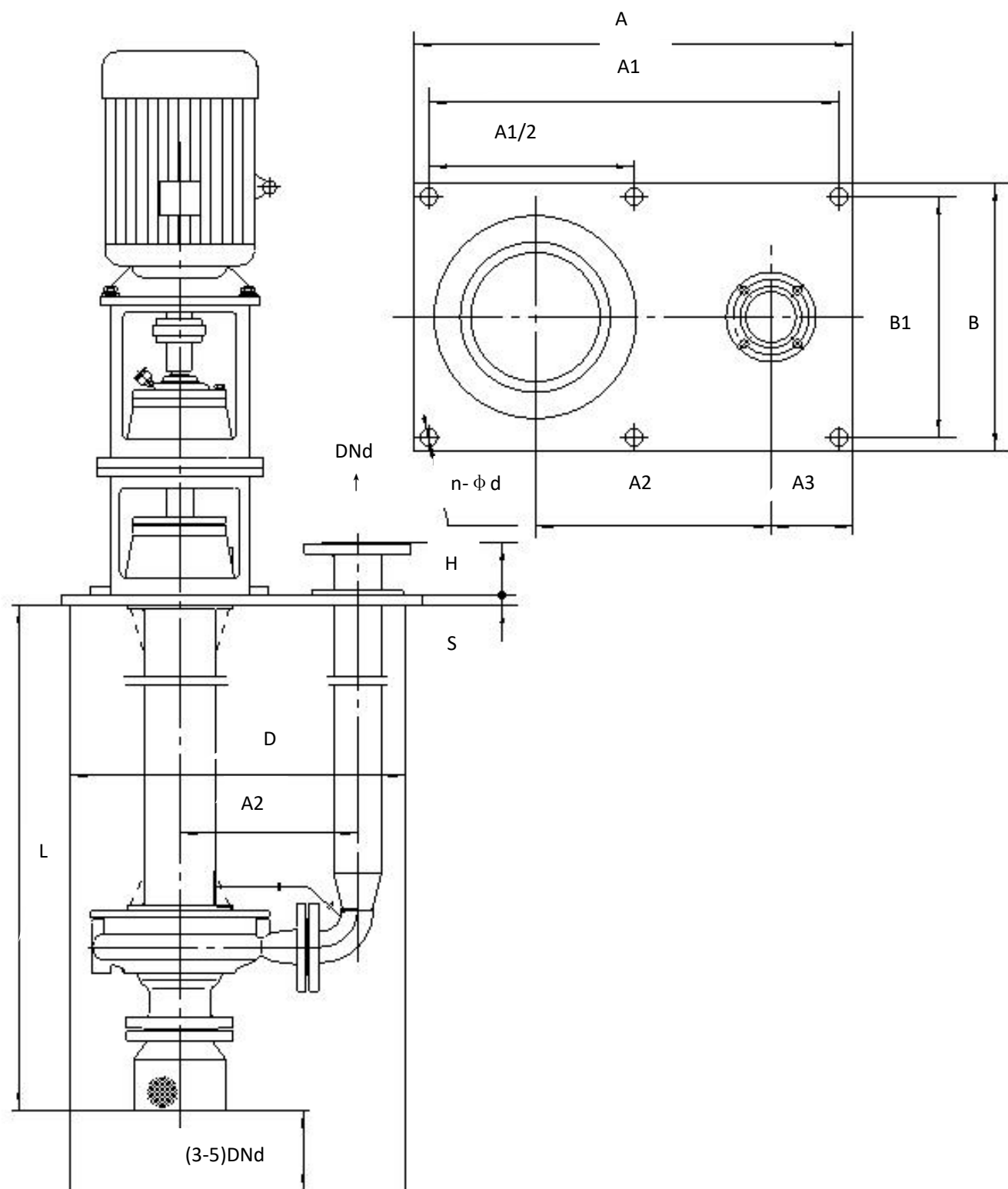
液下长度标准值 Standard value of underwater length: 0.5 1.0 1.5 2.0 2.5 3.0 3.5 4.0 4.5 5.0 5.5 6.0 6.5 7.0 7.5 8.0 8.5 9.0

说明 Description: 1.长度在 0.5-9.0 米之间, 可根据实际需要订做。 length between 0.5-9.0 meters, can be customized according to the actual needs.

2.如用户有特殊性能参数要求时, 请与我公司技术部联系。 if the user has special performance parameters, please contact our technology department.

LF 系列液下泵外形及安装尺寸 (安装尺寸可根据用户要求制造, L 由用户确定)

LF series underwater pump shape and installation size (installation size can be manufactured according to user requirements, L is determined by users)



LF 液下泵外形及安装尺寸表

LF liquid pump shape and installation dimension table

型号 Model	D(孔口)	A	A1	A2	A3	B	B1	S	n-Φd	H	DN	PN
25LF-20	320*190	350	330	180	70	200	160	10	4-Φ15	60	25	1.0
25LF-32	450*260	550	490	276	120	390	340	16	4-Φ19	80	25	1.0
25LF-50	450*260	550	490	276	120	390	340	16	4-Φ19	80	25	1.0
32LF-20	320*190	350	330	180	70	200	160	10	4-Φ15	60	32	1.0
32LF-32	450*260	550	490	276	120	390	340	16	4-Φ19	80	32	1.0
32LF-50	460*300	600	500	250	140	400	360	15	4-Φ19	80	32	1.0
32LF-80	750*450	900	840	500	125	600	540	20	4-Φ19	120	32	1.0
40LF-20	500*290	550	490	276	120	390	340	20	4-Φ19	80	40	1.0
40LF-32	500*290	550	490	276	120	390	340	20	4-Φ19	80	40	1.0
40LF-8*Z	500*290	550	490	276	120	390	340	20	4-Φ19	80	40	1.0
40LF-50	500*290	550	490	276	120	390	340	20	4-Φ19	80	40	1.0
40LF-80	750*450	900	840	500	125	600	540	20	4-Φ19	120	40	1.0
40LF-125	750*450	900	840	500	125	600	540	20	4-Φ19	120	40	1.0
50LF-20	500*290	550	490	276	120	390	340	20	4-Φ19	80	50	1.0
50LF-32	500*290	550	490	276	120	390	340	15	4-Φ19	80	50	1.0
50LF-50	500*290	550	490	276	120	390	340	20	4-Φ19	80	50	1.0
50LF-12*Z	500*290	550	490	276	120	390	340	20	4-Φ19	80	50	1.0
50LF-80	750*450	900	840	500	125	600	540	20	4-Φ19	120	50	1.0
50LF-125	750*450	900	840	500	125	600	540	20	4-Φ19	120	50	1.0
65LF-20	500*290	550	490	276	120	390	340	20	4-Φ19	80	65	1.0
65LF-32	500*290	550	490	276	120	390	340	20	4-Φ19	80	65	1.0
65LF-50	500*290	550	490	276	120	390	340	20	4-Φ19	80	65	1.0
65LF-12*Z	500*290	550	490	276	120	390	340	20	4-Φ19	80	65	1.0
65LF-80	750*450	900	840	500	125	600	540	20	4-Φ19	120	65	1.0
65LF-125	750*450	900	840	500	125	600	540	20	4-Φ19	120	65	1.0
65LF-190	850*550	970	910	515	140	670	610	20	4-Φ19	140	65	1.0
65LF-240	850*550	970	910	515	140	670	610	20	4-Φ19	140	65	1.0
80LF-20	750*450	900	840	500	125	600	540	20	4-Φ19	120	80	1.0
80LF-32	750*450	900	840	500	125	600	540	20	4-Φ19	120	80	1.0
80LF-35	750*450	900	840	500	125	600	540	20	4-Φ19	120	80	1.0
80LF-50	750*450	900	840	500	125	600	540	20	4-Φ19	120	80	1.0
80LF-80	750*450	900	840	500	125	600	540	20	4-Φ19	120	80	1.0
80LF-20*Z	750*450	900	840	500	125	600	540	20	4-Φ19	120	80	1.0
80LF-125	750*450	900	840	500	125	600	540	20	4-Φ19	120	80	1.0
100LF-8	850*550	970	910	515	140	670	610	20	4-Φ19	140	100	1.0
100LF-12	850*550	970	910	515	140	670	610	20	4-Φ19	140	100	1.0
100LF-20	850*550	970	910	515	140	670	610	20	4-Φ19	140	100	1.0
100LF-20*Z	850*550	970	910	515	140	670	610	20	4-Φ19	140	100	1.0

辰禹(重庆)流体设备有限公司 --液下泵 Underwater pump

型号 Model	D(孔口)	A	A1	A2	A3	B	B1	S	n-Φd	H	DN	PN
100LF-32	1150*650	1300	1250	665	210	800	750	30	6-Φ23	140	100	1.0
100LF-46	1150*650	1300	1250	665	210	800	750	30	6-Φ23	140	100	1.0
100LF-50	1150*650	1300	1250	665	210	800	750	30	6-Φ23	140	100	1.0
100LF-60	1150*650	1300	1250	665	210	800	750	30	6-Φ23	140	100	1.0
100LF-64	1150*650	1300	1250	665	210	800	750	30	6-Φ23	140	100	1.0
150LF-10	1150*650	1300	1250	665	210	800	750	30	6-Φ23	140	150	1.0
150LF-15	1150*650	1300	1250	665	210	800	750	30	6-Φ23	140	150	1.0
150LF-15*Z	1150*650	1300	1250	665	210	800	750	30	6-Φ23	140	150	1.0
150LF-20	1150*650	1300	1250	665	210	800	750	30	6-Φ23	140	150	1.0
150LF-32	1150*650	1300	1250	665	210	800	750	30	6-Φ23	140	150	1.0
150LF-50	1150*650	1300	1250	665	210	800	750	30	6-Φ23	140	150	1.0
150LF-75	1150*650	1300	1250	665	210	800	750	30	6-Φ23	140	150	1.0
200LF-12	1150*650	1300	1250	665	210	800	750	30	6-Φ23	140	200	1.0
200LF-20	1150*650	1300	1250	665	210	800	750	30	6-Φ23	140	200	1.0
200LF-30	1150*650	1300	1250	665	210	800	750	30	6-Φ23	140	200	1.0
200LF-32	1550*800	1700	1640	985	240	1000	950	30	6-Φ23	140	200	1.0
200LF-50	1550*800	1700	1640	985	240	1000	950	30	6-Φ23	140	200	1.0
200LF-75	1650*900	1900	1840	985	240	1200	1140	30	6-Φ23	140	200	1.0
200LF-100	1650*900	1900	1840	985	240	1200	1140	30	6-Φ23	140	200	1.0
200LF-115	1650*900	1900	1840	985	240	1200	1140	30	6-Φ23	140	200	1.0
250LF-27	1150*650	1300	1250	665	210	800	750	30	6-Φ23	140	250	1.0
250LF-85	1550*800	1700	1640	985	240	1000	950	30	6-Φ23	140	250	1.0
250LF-100	1650*900	1900	1840	985	240	1200	1140	30	6-Φ23	140	250	1.0
250LF-132	1650*900	1900	1840	985	240	1200	1140	30	6-Φ23	140	250	1.0
300LF-50	1550*800	1700	1640	985	240	1000	950	30	6-Φ23	140	300	1.0
300LF-80	1550*800	1700	1640	985	240	1000	950	30	6-Φ23	140	300	1.0
300LF-100	1650*900	1900	1840	985	240	1200	1140	30	6-Φ23	140	300	1.0
300LF-125	1650*900	1900	1840	985	240	1200	1140	30	6-Φ23	140	300	1.0
350LF-50	1550*800	1700	1640	985	240	1000	950	30	6-Φ23	140	350	1.0
350LF-80	1650*900	1900	1840	985	240	1200	1140	30	6-Φ23	140	350	1.0
350LF-100	1650*900	1900	1840	985	240	1200	1140	30	6-Φ23	140	350	1.0
350LF-130	1650*900	1900	1840	985	240	1200	1140	30	6-Φ23	140	350	1.0
400LF-23	1650*900	1900	1840	985	240	1200	1140	30	6-Φ23	140	400	1.0
400LF-75	1650*900	1900	1840	985	240	1200	1140	30	6-Φ23	140	400	1.0
400LF-100	1650*900	1900	1840	985	240	1200	1140	30	6-Φ23	140	400	1.0
400LF-125	1650*900	1900	1840	985	240	1200	1140	30	6-Φ23	140	400	1.0

部分业绩表

序号	使用单位	主要供货内容	输送介质	地址
1	西南铝业集团涂层线	酸洗液下泵、水洗液下泵、污水液下泵、乳液转运液下泵等	酸、碱、污水、乳液	重庆西彭
2	河南中孚实业股份有限公司	污水液下泵	废乳化液	河南
3	泸天化股份有限公司	氨液循环液下泵	氨液	泸州市纳溪区
4	四川化工厂	高温硫磺液下泵	硫磺	成都青白江
5	中国原子能科学研究院核物理研究所	高温重金属液下泵	高温重金属	北京
6	北京工业大学	高温液下泵	KCl,NaCl	北京
7	西安工业大学	高温液下泵	KCl,NaCl	西安
8	重庆福安药业（集团）股份有限公司	酸、碱液下泵	酸、碱	重庆
9	重庆农药化工(集团)有限公司	不锈钢液下泵	酸、碱	重庆
10	重庆昌元化工有限公司	不锈钢液下泵	高锰酸钾	重庆
11	四川维尼纶厂有限公司	不锈钢液下泵	热水	重庆
12	四川兰天化工科技有限公司	不锈钢液下泵	液氨	四川
13	甘肃永昌泰琦化工有限责任公司	不锈钢液下泵	硫酸	甘肃
14	北京东方昊为工业装备有限公司	循环液下泵	去离子水	北京
15	重庆定原化工有限公司	高温液下泵	烧碱	重庆
16	四川华油实业发展总公司	高温液下泵	沥青	重庆
17	重庆永川农药厂	耐酸液下泵	酸液	重庆
18	什邡运东磷化工有限公司	浆液液下泵	磷矿浆	四川
19	鞍山惠丰化工有限公司	不锈钢液下泵	聚合物	辽宁
20	桐君阁药厂有限公司	液下泵	药液	重庆
21	重庆长江涂装机械公司	不锈钢液下泵	酸洗液	重庆
22	扬州琼花涂装有限公司	不锈钢液下泵	脱脂水	江苏
23	长安工业集团有限（责任）公司	耐酸液下泵	酸、脱脂水	重庆
24	广西柳州银海铝业有限公司	乳化液循环液下泵	乳化液	广西
25	东方锅炉股份有限公司	高温熔盐液下泵	熔盐	四川
26	垫江脱硫厂	高温液下泵	亚硫酸钠	重庆垫江
27	隆鑫物业开发公司	污水液下泵	污水	重庆
28	南京市派尔流体工程技术公司	污水液下泵	污水	南京
29	重庆都和置业有限公司	污水液下泵	生活污水	重庆

Partial performance table

Serial number	Unit of use	Main supply content	Conveying medium	add
1	Coating line of Southwest Aluminum Industry Group	Pump under pickling liquid, pump under water washing liquid, pump of sewage liquid, pump of emulsion transport and so on	Acid,alkali,sewage, emulsion	XiPeng, Chongqing
2	Henan Zhongfu industry Limited by Share Ltd	Sewage pump	Waste emulsion	Henan
3	Lutianhua Limited by Share Ltd	Ammonia liquid circulating pump	Liquid ammonia	NaxiDistrict Luzhou City
4	Sichuan chemical plant	High temperature sulphur pump	sulfur	Qingbaijiang, Chengdu
5	Institute of nuclear physics, China Institute of Atomic Energy	High temperature heavy metal underwater pump	High temperature heavy metal	Beijing
6	Beijing University of Technology	High temperature underwater pump	KCl,NaCl	Beijing
7	Xi'an Technological University	High temperature underwater pump	KCl,NaCl	Xi'an
8	Chongqing Fu'an Pharmaceutical (Group) Limited by Share Ltd	Acid and alkali liquid pump	Acid and alkali	Chongqing
9	Chongqing pesticide chemical (Group) Co., Ltd.	Stainless steel underwater pump	Acid and alkali	Chongqing
10	Chongqing Changyuan Chemical Co., Ltd.	Stainless steel underwater pump	potassium permanganate	Chongqing
11	Sichuan Vigny Fiber Factory Co., Ltd.	Stainless steel underwater pump	hot water	Chongqing
12	Sichuan Lantian Chemical Technology Co., Ltd.	Stainless steel underwater pump	liquid ammonia	Sichuan
13	Gansu Yongchang Taqi Chemical Co., Ltd.	Stainless steel underwater pump	sulphuric acid	Gansu
14	Beijing Dongfang Hao Industrial Equipment Co., Ltd.	Circulating pump	Deionized water	Beijing
15	Chongqing fixed chemical Chemical Co., Ltd.	High temperature underwater pump	caustic soda	Chongqing
16	Sichuan China Oil Industry Development Corporation	High temperature underwater pump	asphalt	Chongqing
17	Chongqing Yongchuan pesticide factory	Acid resistant pump	Acid	Chongqing
18	Shifang Yundong Phosphorus	Slurry pump	Phosphorous	Sichuan

辰禹(重庆)流体设备有限公司 --液下泵 Underwater pump

	Chemical Co. Ltd.		pulp	
19	Anshan Huifeng Chemical Co., Ltd.	Stainless steel underwater pump	polymer	Liaoning
20	TongJunGe Pharmaceutical Co. Ltd.	Underwater pump	Liquid medicine	Chongqing
21	Chongqing Changjiang painting machinery company	Stainless steel underwater pump	Pickling solution	Chongqing
22	Yangzhou Qionghua Painting Co., Ltd.	Stainless steel underwater pump	Defatted water	Jiangsu
23	Limited (responsibility) Company of Changan industrial group	Acid resistant pump	Acid, defatted water	Chongqing
24	Guangxi Liuzhou Yin Hai Aluminum Co., Ltd.	Emulsion circulating liquid pump	Emulsion	Guangxi
25	Oriental boiler Limited by Share Ltd	High temperature molten salt liquid pump	Molten salt	Sichuan
26	Dianjiang desulphurization plant	High temperature underwater pump	sodium sulfite	Dianjiang, Chongqing
27	LONCIN property development company	Sewage pump	sewage	Chongqing
28	Nanjing Pyle fluid engineering technology company	Sewage pump	sewage	Nanjing
29	Chongqing Capital Co., Ltd.	Sewage pump	domestic sewage	Chongqing

选型数据表 Type selection data table

辰禹(重庆)流体设备有限公司 Chongqing Xingge Pump Group Co.Ltd		液下泵选型数据表 Type selection data table for underwater pump		用户名称 User name:	
设备名称 Device:				项目名称 entry name:	
数量 Quantity:				设备位号 Device bit No:	
				泵型号 Pump model:	
1	使用单位 Unit of use	泵用途 Pump use			
2	电话 Tel	联系人 Contacts	地址 Add		
3	工 作 条 件 Working conditions		材 质 Texture of material		
4	流量 Capacity: 最小 Min/ 正常 Nor/ 最大 Max	m ³ /h	泵体 Pump body:	叶轮 Impeller:	
5	扬程 Head: m	装置汽蚀余量 NPSHr: m	口环 Ring:	泵盖(吸入段) Pump cover (suction section):	
6	使用方式 Mode of use: <input type="checkbox"/> 连续 continuity <input type="checkbox"/> 间歇 Intermission(启动次数 starting times/每日 Daily Times 次)		轴 shaft:	导轴承 Guide bearing:	
7	<input type="checkbox"/> 室外 outside <input type="checkbox"/> 室内 indoor <input type="checkbox"/> 海岸 Coast <input type="checkbox"/> 并联运行 parallel operation		轴套 shaft sleeve:	底板 Floor:	
8	介 质 Medium		轴承箱 Bearing box:	联轴器罩 Coupling hood:	
9	名称 name:		轴封 Seal		
10	工作温度 working temperature(正常 Nor/最大 Max) °C		轴封型式 Shaft seal type: <input type="checkbox"/> 填料密封 Packing seal <input type="checkbox"/> 无密封 Unsealed		
11	泵送温度时的密度 Density: kg/m ³		填料密封 Packing seal : <input type="checkbox"/> 填料密封带保温或冷却 Packing seal with heat preservation or cooling		
12	泵送温度时的运动粘度 Viscosity: mm ² /s		<input type="checkbox"/> 填料密封不带保温或冷却 Packing seal without heat preservation or cooling		
13	O.T 时的汽化压力 Vapor Pressure: MPa (A)		填料材料 Packing material:		
14	腐蚀/冲蚀剂 Corrosion / erosion agent:		冲 洗 和 冷 却 (保 温) Flushing and cooling (heat preservation)		
15	固体含量 Solid content: %质量 quality 颗粒最大直径 Maximum diameter of particles: mm		冲洗方案代号 Flush scheme Code:		
16	危险 danger: <input type="checkbox"/> 腐蚀性 Corrosive <input type="checkbox"/> 有毒 poisonous <input type="checkbox"/> 易燃易爆 Inflammable and explosive <input type="checkbox"/> 其它 Other		冲洗液名称 Rinse name:	冲洗液压力 Rinse pressure:	
17	泵 性 能 和 结 构 Pump capacity and structure.		冲洗液温度 Washing liquid temperature: °C	冲洗液流量 Flushing fluid flow: m ³ /h	
18	泵 转 速 Speed: rpm	效率 Efficiency: %	轴功率 shaft power: KW		
19	最小连续流量 Min: m ³ /h	必需汽蚀余量(NPSH)r: m	冲洗部位 Flushing part: <input type="checkbox"/> 导轴承 Guide bearing <input type="checkbox"/> 其它 Other		
20	叶轮直径 The impeller diameter (最大 Max/工作点): mm		冲洗管路 Flushing pipeline : <input type="checkbox"/> 碳钢 carbon steel <input type="checkbox"/> 不锈钢 Stainless steel		
21	叶轮支撑方式 Impeller support mode <input type="checkbox"/> 悬臂 cantilever <input type="checkbox"/> 悬吊式 Suspension type		<input type="checkbox"/> 螺纹联接 Threaded connection <input type="checkbox"/> 法兰联接 Flange connection <input type="checkbox"/> 其它 Other		
22	叶轮形式 Impeller form : <input type="checkbox"/> 闭式 Closed <input type="checkbox"/> 半开式 Semi open <input type="checkbox"/> 开式 open		冷却(保温)方案代号: Cooling (heat preservation) scheme code		
23	叶轮级数 Impeller series: <input type="checkbox"/> 单级 Single <input type="checkbox"/> 多级 multistage		冷却液名称 Coolant name:	冷却液压力 Coolant pressure:	
24	轴向力平衡方式 Axial force balance: <input type="checkbox"/> 平衡孔 Balance hole <input type="checkbox"/> 背叶片 Dorsal blade <input type="checkbox"/> 副叶轮 expeller		冷却液温度: °C	冷却液流量: m ³ /h	
25	旋转方向(从联轴器端看) Rotation direction (from the side of the coupler): <input type="checkbox"/> 顺时针 Clockwise <input type="checkbox"/> 逆时针 Anti-clockwise		冷却液温度: °C	冷却液流量: m ³ /h	
26	泵壳安装方式		冷却部位 Cooling part: <input type="checkbox"/> 泵盖 Pump cover <input type="checkbox"/> 轴承箱 Bearing box <input type="checkbox"/> 填料箱 Packing box <input type="checkbox"/> 泵体 Pump body		

辰禹(重庆)流体设备有限公司 --液下泵 Underwater pump

	Installation mode of pump shell: <input type="checkbox"/> VS4 <input type="checkbox"/> VS5 <input type="checkbox"/> VS1					<input type="checkbox"/> 护管 Protective tube <input type="checkbox"/> 其他 Other			
27	泵壳剖分方式 Subdivision mode of pump shell: <input type="checkbox"/> 径向 radial <input type="checkbox"/> 轴向 axial					补充说明 additional remarks			
28	泵壳型式 Pump shell type: <input type="checkbox"/> 单蜗壳 Single <input type="checkbox"/> 双蜗壳 Double					1:地平面 Ground plane	2: 泵基础安装面 (泵底板下表面) Pump base mounting surface (bottom surface of pump bottom)		
29	法兰标准 Flanges standard	口径 caliber	法兰 flange	密封面 Sealing surface	朝向 direction	3: 允许泵起动的最低液面 The minimum level to allow the pump to start		4: 最低工作液位 Minimum working level	
30		mm	等级 Grade	形式 form	位置 Seat	5: 首级叶轮入口 Impeller entrance		6: 泵末端 Pump end	
31	吐出口 Exits					7: 池底或地罐集液包底 Bottom of pool or ground tank			
32	泵壳设计压力 design pressure: Mpa		试验压力 Test pressure: MPa		主要安装尺寸 installation size				
33	联轴器型式 Coupler type: <input type="checkbox"/> BJ 系列便检式挠性联轴器 BJ set flexible coupling <input type="checkbox"/> 弹性柱销 Elastic pin					L0	mm	L3	mm
34	<input type="checkbox"/> 金属膜 Metal film		<input type="checkbox"/> 爪型联轴器片 Jaw coupling			L1	mm	L4	mm
35	轴承型式 Bearing type: <input type="checkbox"/> 滑动轴承 Slide <input type="checkbox"/> 径向滚动 rolling <input type="checkbox"/> 止推轴承 Thrust <input type="checkbox"/> 其它 Other					L2	mm	L5	mm
36	轴承润滑 Bearing lubrication : <input type="checkbox"/> 油 oil <input type="checkbox"/> 脂 fat <input type="checkbox"/> 介质自身 Self					<div style="text-align: center;"> <p style="text-align: center;">集液槽布置</p> </div>			
37	<input type="checkbox"/> 淹没 Flood <input type="checkbox"/> 油杯 Oil cup <input type="checkbox"/> 抛油环 ring oiler <input type="checkbox"/> 其它 Other								
38	电动机 Motor								
39	型号 Mod :		电机厂商 firm :						
40	功率 power: kW		极数 No:	转速 Speed: rpm					
41	电压 Voltage: V		相数 No:	频率 Rate: Hz					
42	防护等级 protect: IP		防爆等级 explosion-proof:	绝缘等级 Insulation:					