
Instructions for the Electric Three-wheeled Motorcycle

Welcome to use the Guoning brand electric three-wheeled motorcycle produced by our company.

Before using this product, please read the instructions carefully, correctly grasp the common knowledge of the vehicle model such as the basic operating functions and usage methods. Please do not use this motorcycle without understanding its characteristics.

The data description, technical qualification, performance parameters, and other contents published in this user manual are based on the latest information of the vehicle model. Our company has the right to modify this user manual at any time without prior notice and without any responsibility. We apologize for any inconvenience caused. Without the written permission from our company, any unit or individual shouldn't reprint any part of this instruction manual.

Sincerely hope that you can put forward valuable opinions on the design, manufacturing and quality of this product. If you have any good suggestions and opinions, please write to our company for timely improvement.

If you need further detailed information about this car, please contact our local special maintenance service center or the national free customer service hotline. Our company will provide you with the best quality and fastest service.

Please purchase original parts and accessories produced and manufactured by our company.

The content and pictures in this instruction manual are for reference only. Please refer to the actual product for accuracy.

The implementation standard of this product : Q/YS 001-2019

Please read this manual carefully before using this product!



Danger

1. Please strictly abide by traffic regulations and drive safely.
2. In order to ensure driving safety, it is prohibited to drive after drinking alcohol or taking drugs.
3. It is prohibited to participate in various racing activities with the vehicle. If mechanical accidents or personal injuries occur, the consequences will be borne by oneself.
4. It is prohibited for patients with mental illness, those with a history of mental illness, heart disease, deaf mute and disabled people to drive this vehicle.



Notice

1. Overloading is strictly prohibited.
2. It is prohibited to modify any components of this vehicle, otherwise it will affect the reliability, stability, and comfort of the vehicle.
3. To avoid damaging the battery, it is necessary to fully charge the battery voltage at once, and it is prohibited to invert the battery during charging. It is prohibited to rinse this vehicle with high-pressure water to avoid accidents caused by short circuits in internal electronic components and circuits.



Warning

1. You need to wear protective equipment such as helmets, dust goggles, and gloves while driving.
2. It is prohibited to hang items on the steering handles, otherwise it will affect driving safety.
3. Please use the original charger matched our company's products for charging, otherwise it will damage the battery.
4. It is prohibited to wear loose clothing, slippers, etc. while driving this vehicle, otherwise it is easy to hook the control handle and accessories, causing safety hazards.



Suggestions

1. This instruction manual is one of the necessary items for this vehicle. When the vehicle is transferred to others for use, it should be attached with the vehicle.
2. When the vehicle is not in use for a long time, it is necessary to have sufficient battery power to avoid loss of power storage, otherwise it will affect the battery life.
3. Please don't lend this vehicle to anyone who can't operate an electric tricycle for riding.

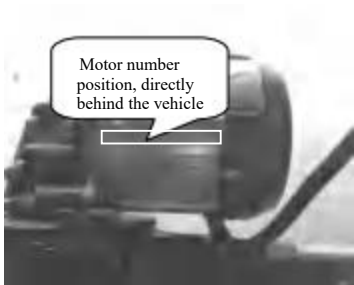
-
-
1. Front wheel
 2. Front brake
 3. Front shock absorber
 4. Instrumentation
 5. Seat cushion
 6. Container
 7. Left and right wheels
 8. Tail lights



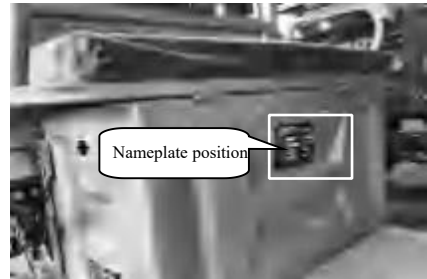
■ Due to the continuous updates and variety of products, we will not list them one by one here.

Vehicle identification number, motor code position

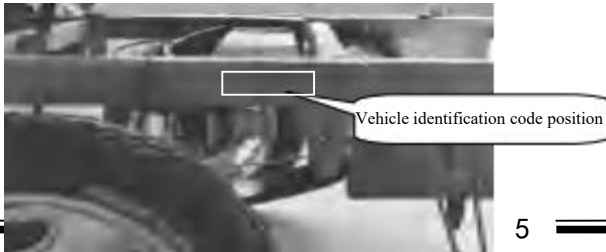
- 1、 The position of the motor number identification code is shown in the figure.



- 3、 The nameplate position is shown in the figure.

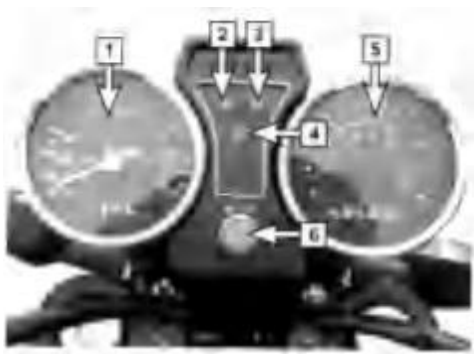






- 2、 The position of the vehicle identification code is shown in the figure.



Instrument

The main indicator functions of the dashboard are as follows:



Name	Function Description
1. Speedometer	Display the driving speed of an electric three-wheeled motorcycle.
2. Left turn indicator light	When the left turn signal is turned on, the “  ” light flashes.
3. Right turn indicator light	When the right turn signal is turned on, the “  ” light flashes.
4. High beam indicator	When the high beam is turned on, the “  ” light will turn on.
5. Electricity meter	It displays the current battery level of the electric tricycle, and the flashing red light indicates low battery. Please charge it as soon as possible.
6. Power lock	Turn the key to the “  ” position, the circuit can be turned on to start, and the key cannot be removed; Turn the key to the “R” position, the circuit is disconnected and cannot be started. The key can be removed.

Left handlebar switch

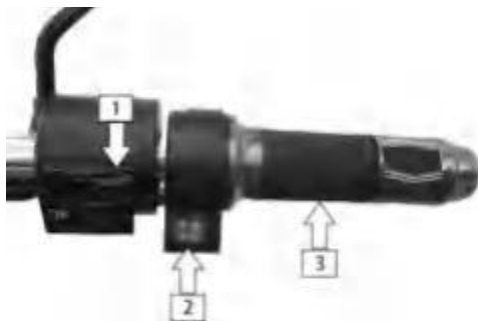
The main functions of the left handlebar switch are as follows:



Name	Instructions for use
1.Dimming switch	When an electric three-wheeled motorcycle needs to use high beams, turn the switch to the "D" position. When using low beams, turn the switch to the "D" position.
2.Turn signal switch	When it needs to change the travel direction, turn the switch to "↶", the left turn signal on, turn the switch to "↷", the right turn signal on.
3.Horn button	When an electric three-wheeled motorcycle needs to honk, press and hold the "🔊" button.

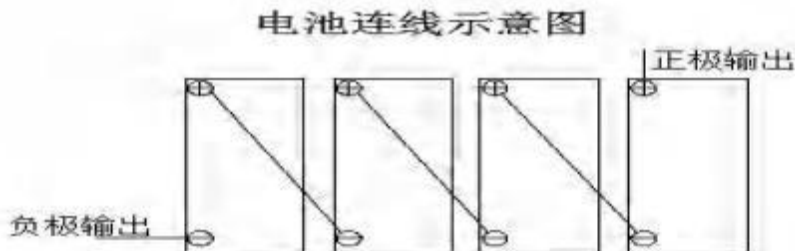
Right handlebar switch

The main functions of the right handlebar switch are as follows:



Name	Instructions for use
1. Lighting switch	When the switch is turned to the "☀" position, the headlight circuit is connected. When the switch is turned to the "P<" position, the instrument indicator light, tail light, and position light circuits are connected. When the lighting switch is turned to the "●" position, the lighting system is turned off.
2.Reverse button	Press the "Forward" button on the left to move forward, and press the "Reverse" button on the right to move backward.
3.Speed control lever	It controls the driving speed of electric motorcycles.

Charger, Battery



Battery charging

First connect the output of the charger to the socket on the battery box, then plug the charger plug into a regular power outlet. At this time, the red indicator light on the charger panel is on, indicating power input and charging. After 7-8 hours of charging, the green indicator light of the charger is on, indicating that the battery is basically fully charged. Charging can be completed after 1-2 hours of floating charging. After charging, you should first cut off the charger power, and then unplug the output plug from the battery box socket. Please use the manufacturer's original or designated charger when charging.

Charger, Battery



Attention

1. The voltage and current of the battery must be consistent with the specifications of the charger during charging, and the polarity of the charger output plug should be consistent with the polarity of the battery pack output plug. Otherwise, the charger and the battery will be damaged.
2. Chargers must be waterproof, moisture-proof, and should be used or stored in dry environment. They should be handled with care, and so on.
3. Batteries should not be placed in sealed containers, close to open flames, thrown into flames or submerged in water. It is prohibited to expose to sunlight directly, and direct exposure to sunlight is strictly prohibited.
4. The ambient temperature during charging should be between 10 °C and 30 °C, with good ventilation maintenance. Higher temperatures will affect charging efficiency and even lead to sulfation, causing the charger to heat up and damage the battery.
5. If the power supply is damaged or the charging system malfunctions, the charger and battery should be replaced and repaired at the designated repair shop by the manufacturer.
6. Don't throw away waste batteries at will to avoid environmental pollution. The waste batteries of this product shall be recycled by our company, distributors, or government designated network.

Warning

1. It is strictly prohibited to touch or open the charger during charging to avoid electric shock and injury, because there is high voltage current inside the charger.
2. The charger will generate heat during the charging process. It should be kept in a well-ventilated area for charging, and should not be charged near flammable or explosive dangerous goods such as carpets and wooden floors to avoid fire or explosion, which may lead to personal injury or death.
3. When the charger indicator light cannot change color for a long time (more than 8 hours) and remains in red indicating signal state, the charging should be immediately stopped and sent to the maintenance service department for inspection.

Check before driving

Before driving, it should be checked in accordance with the following requirements to ensure the user's safe driving and smooth driving.

No.	Items	Inspection content
1	storage battery	Check whether the battery has sufficient power
2	Transmission device	Check whether the controller and drive motor are working properly
3	Lubricating oil	Check whether the lubricating oil has deteriorated and the capacity is sufficient
4	Brake handle	Check whether the disengagement and engagement of the brake handle are normal
5	Shock absorber	Check whether the shock absorber is working properly
6	Speed control handle	Check the flexibility of the speed control handle
7	Steering mechanism	Check the flexibility and stability of the steering mechanism
8	Tires/wheels	Check the tire pressure and wearing condition
9	Lighting/signal indicator lights	Check whether the lighting/signal/indicator lights are working properly
10	Brakes	Check whether the wearing condition and braking performance of brake shoe are good
11	All vehicle fasteners	Check whether there is any looseness or detachment of fasteners on the entire vehicle

Driving operations



Name	Instructions for use
1. Power lock (open)	Insert the key into the power lock and rotate it to the "n" position, then the power supply is connected to each control circuit.
2. Speed control lever	Rotate the right speed knob backwards gently to achieve smooth and stepless speed change from low to high during cycling.

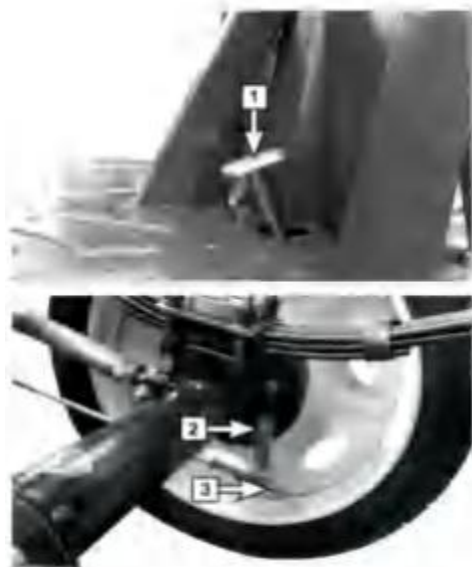
After arriving at the destination, park the car steadily in a flat place, then turn the key to the "X" position, remove the key, pull up the parking handle, lock the car to ensure safety.



Warning

In case of "speeding" during driving, please immediately brake the car with your foot on the brake pedal, quickly turn off the power with your right hand, remove the key, and immediately send it to the designated after-sales service for inspection and repair.

Rear brake



The drum structure adopted by the rear brake ensures the braking performance stable, safe and reliable. The maintenance of drum brakes should be carried out according to the following steps:

1. Check whether the free stroke of the rear brake pedal is within the specified range. If it is not consistent with the standard value, it needs to be readjusted.
2. When the rear brake pedal has poor return or dryness, the brake mechanism should be removed for inspection and lubricating oil should be added.
3. Loosen the fastening nut of the rear brake pull rod, and adjust the adjusting nut backward until the self travel of the rear brake pedal is adjusted within the range of the standard travel value. Then press the brake pedal back and forth several times at the pedal, then rotate the rear wheel to check whether it rotates freely.

Standard value of rear brake pedal travel: 20mm~30mm

Notice

1. After removing the rear wheels, it is necessary to re-check and adjust the free travel of the rear brake pedal when installing it again.
2. When you need to replace the brake shoe, you must go to the company's special authorized maintenance service station to replace them with the original and genuine products.
3. You should visit our company's special maintenance service regularly for inspection and maintenance.

Drive motor

The car adopts DC brushless rear-wheel drive motor, which has the advantages such as strong climbing performance, fast speed, low driving current, long driving range, and good sliding effect, etc.



1. Water ingress into the drive motor can cause insulation decline. You should disassemble and drain off the motor, dry it with hair dryer or sun drying method, and then measure the resistance to make it return to normal. Then repeat the discrimination method to check the sensor. If there is any damage, it should be replaced.

2. Insufficient battery charging will cause short continuous driving range and weak driving motor of electric motorcycles. The battery should be kept in sufficient power.

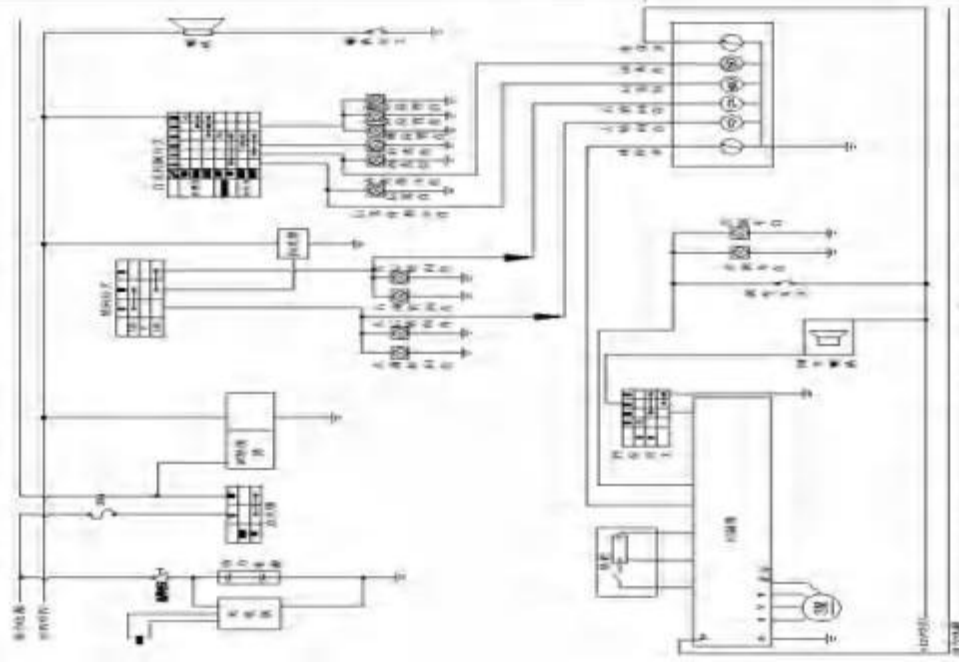
Notice

Low-speed brushed motors and high-speed brushed motors cannot be directly interchanged.

Low-speed brushless motors and high-speed brushless motors cannot be directly interchanged.

Common faults and troubleshooting methods

No.	Faults	Faults cause	Solution
1	The speed control lever is out of control or the maximum driving speed is low.	The battery voltage is too low; the speed control loosens the central wire; the central spring of the speed control is stuck or failed.	Fully charge the battery; reweld the wires; clean or replace the speed control handle.
2	The motor doesn't work when the power is on.	The battery voltage is too low; the speed control loosens the central wire; the motor hub wiring plug is loose or damaged.	Find a professional or repair station for repairs.
3	The mileage is insufficient after one charge.	Insufficient tire pressure; insufficient charging or charger malfunction; over uphill, strong headwinds, frequent braking and start, heavy loads; battery aging or damage.	Sufficient gas supply; sufficient power or check whether the charger plug has poor contact; replace the battery.
4	The charger cannot be charged.	The charger socket detached or loose connection between plug and socket; battery box or charger fuse blown; the battery pack wiring is detached.	Tighten the sockets and plugs; replace the fuse; weld the connection wires.
5	Other faults	In addition to the above faults, internal damages exist in the motor, controller, charger and battery pack.	Please contact the professional maintenance station. Don't open the motor, controller, charger or battery pack without authorization, otherwise, you may lose our company's warranty commitment.



Quality service commitment

1、 The Three Guarantees Commitment (Repair, Replacement, Return) :

When you buy a car, you should conduct on-site inspection and correct debugging, and you have the right to request the sales personnel to provide correct operation and maintenance methods. You should also request the sales personnel to provide you with a warranty card, repair unit, address and contact phone number.

2、 Content and Deadline of The Three Guarantees:

1. Motor: the warranty will be provided for 1 year replacement or maintenance, and damage during normal use; wire cutting is not covered by warranty, which could only be repaired for a fee at discretion.

2. Controller: the warranty will be provided if there is any quality problem within 1 year or damage during normal use; the wire cutting or without label is not covered by warranty.

3. Frame: the warranty will be provided for the replacement or the damage during normal use if it has any cracks or fractures with safety hazards within one year; collision damages are not covered by warranty.

4. Transfer: the warranty will be provided for quality problems within 3 months during normal use; external damage is not covered by warranty.

5. Brake handle, instrument panel, switch assembly: the warranty will be provided for damages within 3 months during normal use; external damage is not covered by warranty.

6. Wheel rim: the warranty will be provided for quality problems within 3 months during normal use; damage or distortion is not covered by warranty.

7. Steel plate: the warranty will be provided for damages within 6 months during normal use.

3、 Content and Scope beyond The Three Guarantees:

1. Malfunctions caused by the user's failure to use, maintain and adjust the vehicle according to the Operation Manual.

2. Any conversion or disassembling to the vehicles by users themselves making the malfunction original state destroyed, which makes it impossible to conduct technical identification and malfunction analysis; malfunction caused by improper use, storage or accidents; the vehicles without warranty cards or with mismatched cards or items.

3. Wearing parts and consumables are not within the scope of The Three Guarantees (wearing parts such as brake pads, inner and outer tires, fuses, light bulb plastic parts, etc.).

4. Some accessories are not within the scope of The Three Guarantees: such as car baskets, rearview mirrors, raincoats, bumpers and other gifts.

4、 Battery recycling: Do not discard the waste batteries at will to avoid environmental pollution. The waste batteries of this product shall be recycled by our company or the distributors.