

CONNECT THE BATTERY CABLE



How to find the location of the battery positive and negative wire plug?

Open the right maintenance cover to view the battery position. Or use the battery prompt label to determine which side of the battery positive and negative wire plugs are on.

1. Loosen the maintenance knob counterclockwise.



2. Open the right maintenance cover and the battery cable is in the lower left corner (next to the empty filter).

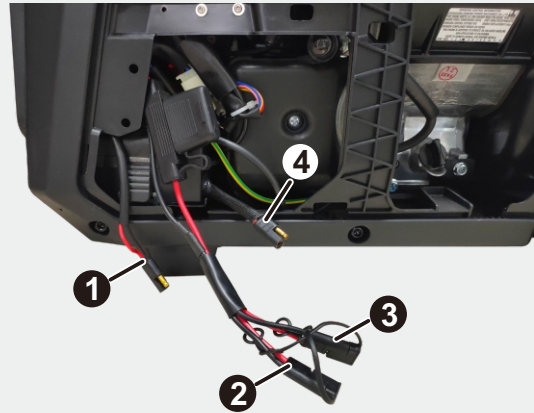


3. Connect the positive and negative battery wires:

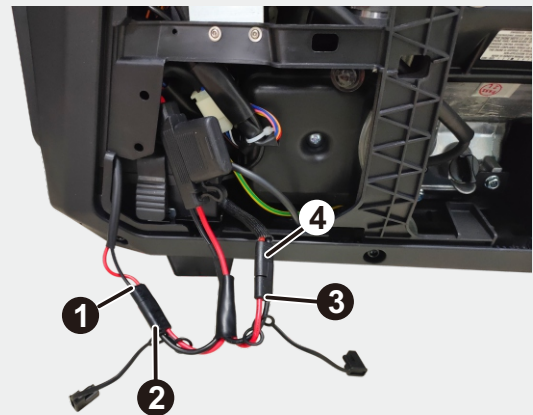
Due to the upgrade of the technology, you may encounter one of the following two types of wiring.

Type 1

There are four positive and negative wire plugs, and the plug ① and plug ② have been connected when the generator is delivered.

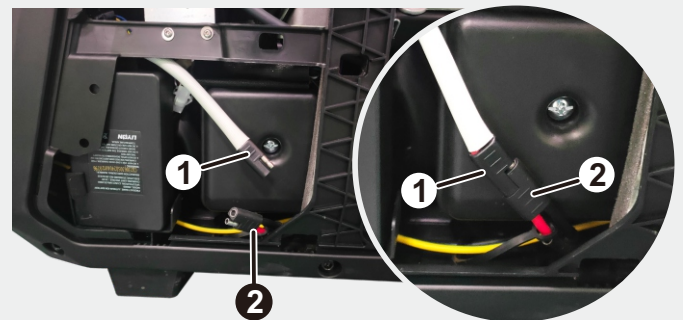


Connect the plug ③ to the plug ④. (Tip: If the plug ① and plug ② are not connected, also connect them.)



Type 2

Connect the plug ① to the plug ②.



CONNECT THE BATTERY CABLE

4. Organize the wiring harness and put it back in place.



5. Put the support lug under the cover plate into the slot of the generator housing and close the cover plate.



6. Tighten the maintenance knob clockwise.



STATEMENT

Due to our continuous improvement of our products, the above illustrations may not match the actual situation, and the illustrations used are only representative reference views.