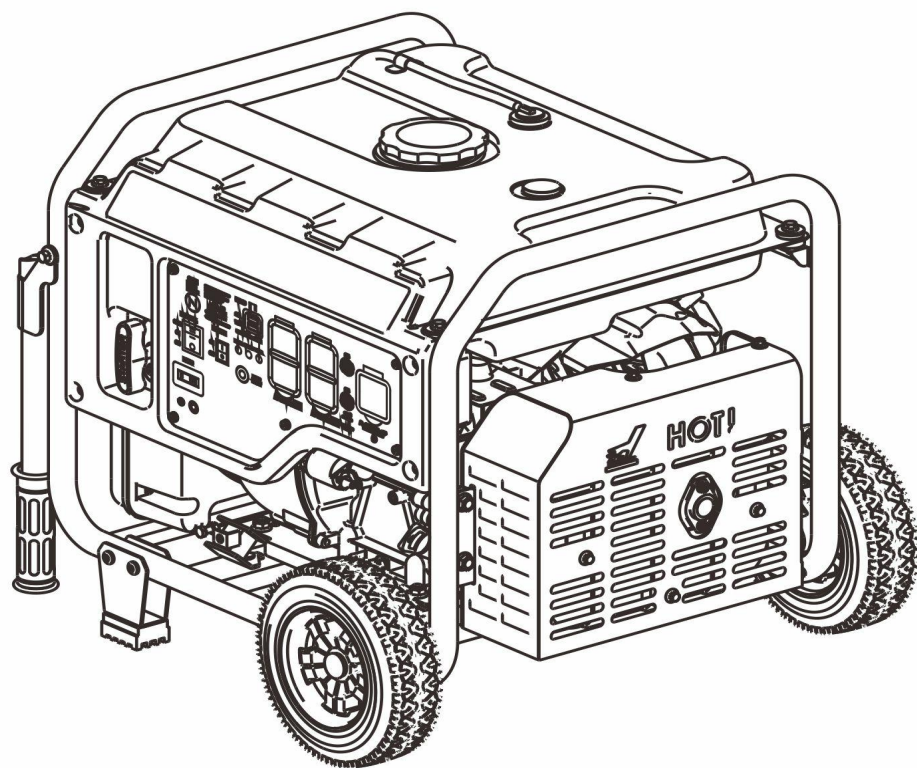


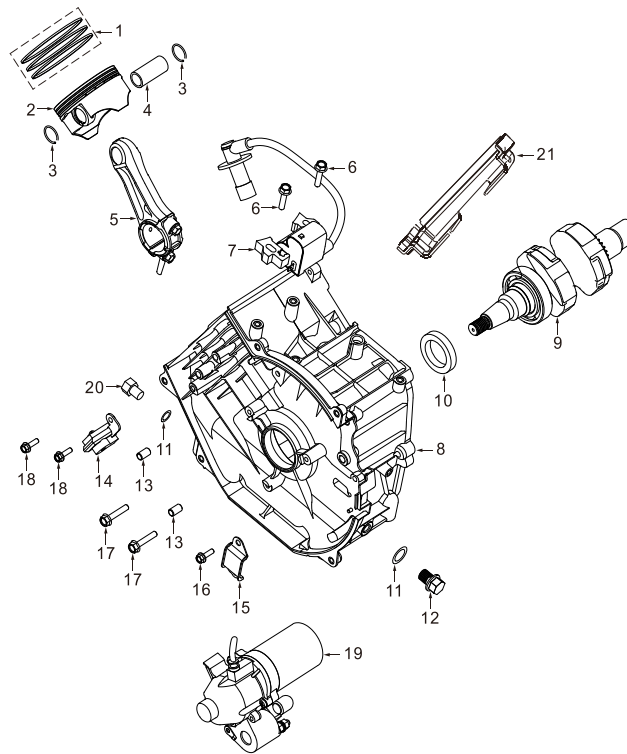
零部件图册

PARTS CATALOG



GM6000XiE

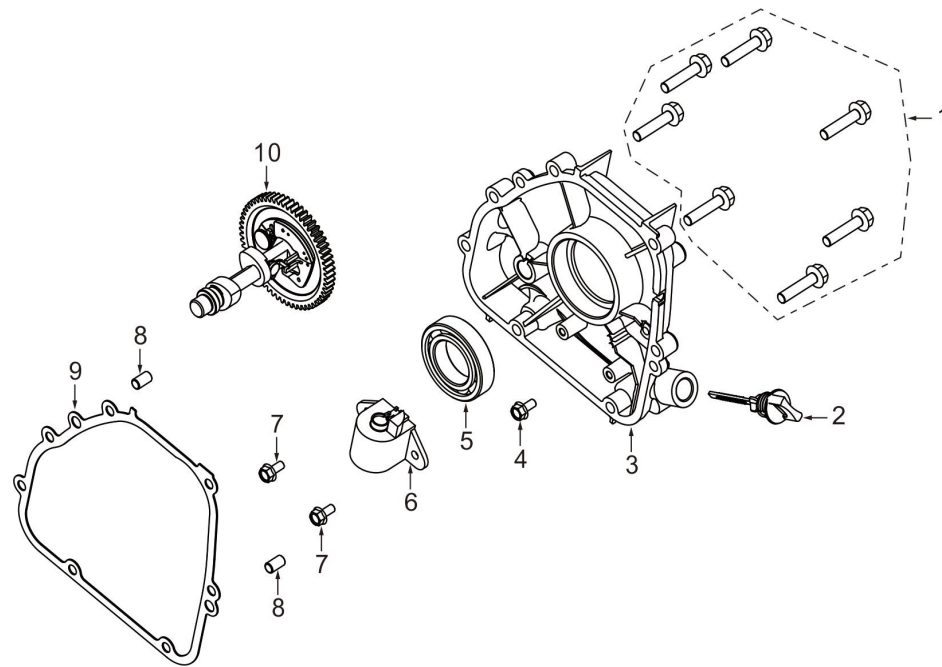
Inverter Generator



曲轴箱 (Crankcase)

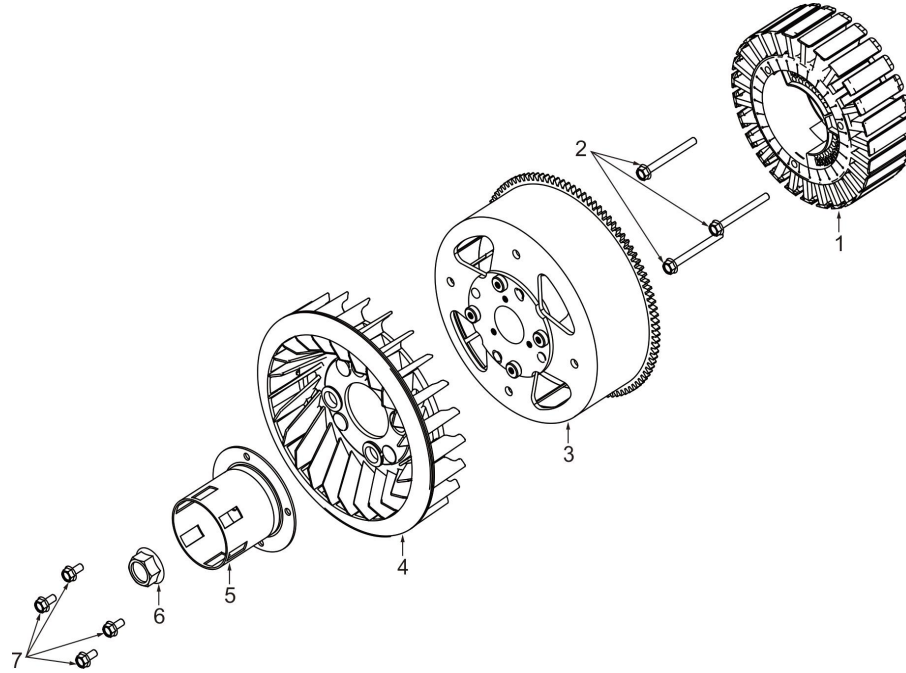
序号 No.	零部件图号 Part No.	零部件名称	Description	数量 Quantity
1	0210.180.X01V.00.00	活塞环组件	Piston ring ass.	1
2	0200.F80.001V.00.00	活塞	Piston	1
3	0230.168.001V.00.00	活塞环卡圈	Clip,Piston pin	2
4	0220.F80.001V.00.00	活塞销	Piston pin	1
5	0190.F80.001V.00.00	连杆组件	Connecting rod assembly	1
6	5787.06025.00.01	螺栓 M6×25	Blot	2
7	2100.F80.001V.00.00	高压包	High pressure bag	1
8	1000.F80.0011.00.00	曲轴箱体	Crankcase body	1
9	0180.F80.001V.61.00	曲轴组件	Grankshaft ass.	1
10	3150.173.001V.00.00	油封 30×46×8	Oil seal	1

11	1260.168.R001V.66.00	放油螺栓垫片 $\phi 10$	Gasket for oil drain bolt	2
12	1250.168.R001V.00.20	放油螺栓	Oil drain bolt	1
13	3170.168.R001V.00.00	定位销-A型 8×14	Set pin	2
14	1521.F80.001V.00.00	触发器	Trigger	1
15	2090.F80.001V.00.00	压线板	Crimping board	1
16	5787.06014.00.01	带盘螺栓 M6×14	Blot	1
17	5789.06028.00.01	带盘螺栓 M6×28	Blot	2
18	5789.05016.00.07	带盘螺栓 M5×16	Blot	2
19	2070.F80.A01V.00.00	起动电机	Starting motor	1
20	1250.168.R0030.00.20	放油螺栓	Oil drain bolt	1
21	6761.F80.0010.00.00	缸体挡风板	Cylinder baffle	1



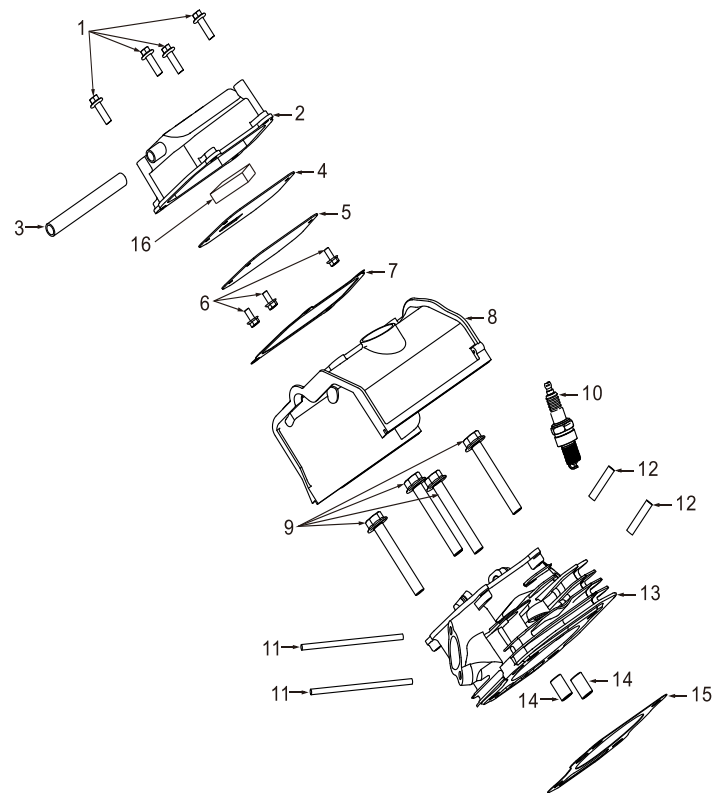
曲轴箱盖 (Crankcase cover)

序号 No.	零部件图号 Part No.	零部件名称	Description	数量 Quantity
1	5787.08035.00.01	带盘螺栓 M8×35	Blot	7
2	1230.F80.001V.00.00	机油尺组件	Oil gauge ass.	1
3	1010.F80.0011.00.00	曲轴箱盖	Crankcase cover	1
4	5789.06010.00.01	带盘螺栓 M6×10	Blot	1
5	0270.173.005V.00.00	轴承6206	Ball bearing	1
6	1020.164.0011.00.00	机油报警器	Warning device	1
7	5787.06014.00.01	带盘螺栓 M6×14	Blot	2
8	3170.168.R001V.00.00	定位销-A型 8×14	Set pin	2
9	3040.F80.0011.00.00	曲轴箱密封垫	Gasket, Crankcase	1
10	1040.F80.0011.60.00	凸轮轴	Camshaft ass.	1



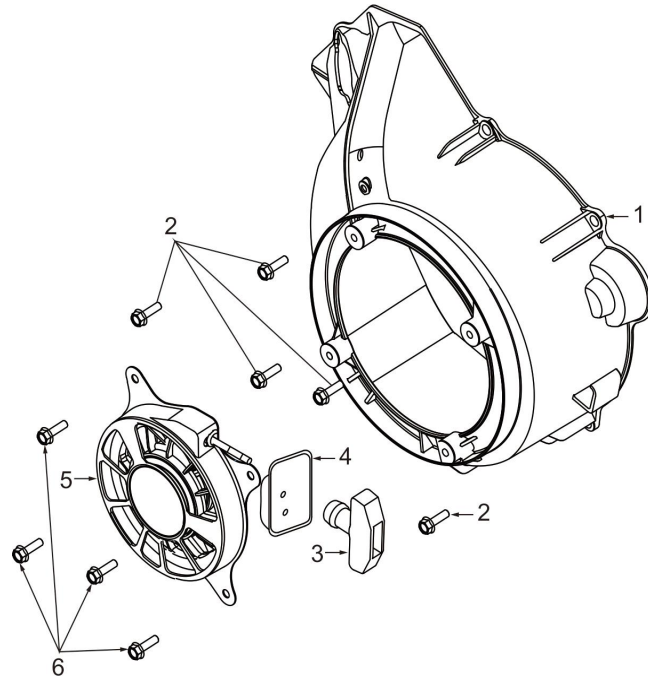
电机组件 (Motor assembly)

序号 No.	零部件图号 Part No.	零部件名称	Description	数量 Quantity
1	4000.528.0030.00.02	电机定子	Motor stator	1
2	5787.06065.00.01	带盘螺栓 M6×65	Blot	3
3	4000.528.001V.00.01	电机转子	Motor rotor	1
4	2030.F80.001V.00.00	飞轮风扇	Flywheel fan	1
5	2020.F80.002V.00.00	起动套	Starting sleeve	1
6	6177.14000.06.01	带盘螺母 M14×1.5	Nut	1
7	5787.06014.00.01	带盘螺栓 M6×14	Blot	4



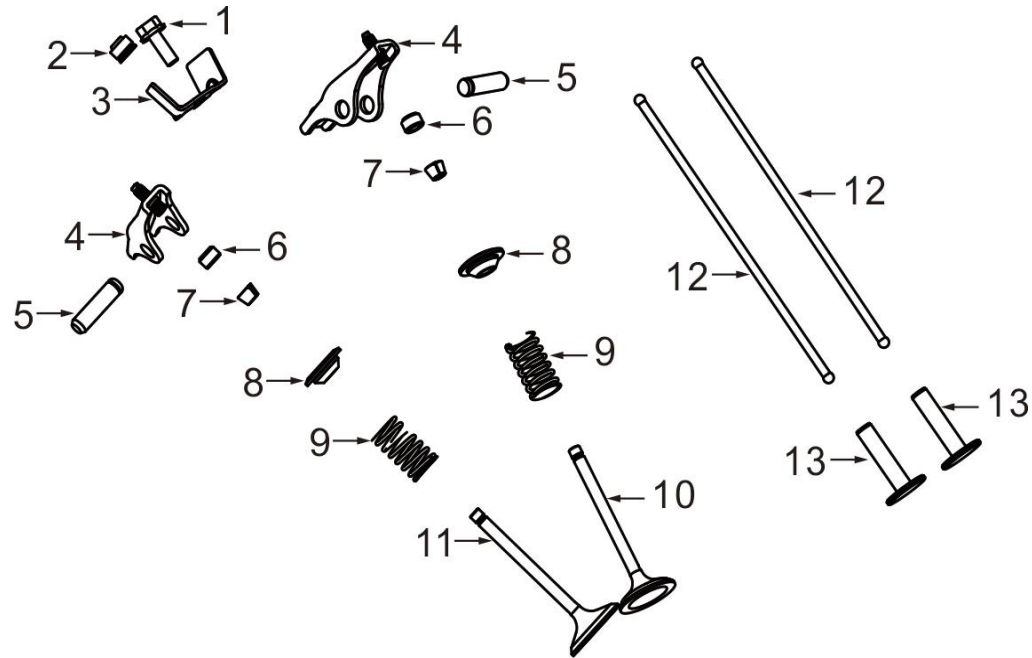
缸头组件 (Cylinder head parts)

序号	零部件图号	零部件名称	Description	数量
No.	Part No.			Quantity
1	5787.06025.00.01	带盘螺栓 M6×25	Blot	4
2	0001.F80.001V.00.01	缸头盖	Cylinder head cover	1
3	2370.F80.001V.00.00	废气管	Exhaust pipe	1
4	7061.F80.001V.00.00	呼吸阀板组合	Breathing valve plate assembly	1
5	7061.F80.002V.00.00	呼吸阀垫	Breathing valve pad	1
6	5789.05010.00.07	螺栓 M5×10	Blot	1
7	3000.F80.001V.00.00	缸头盖垫	Cylinder head cover pad	1
8	2190.F80.0011.00.00	缸头导风罩	Cylinder head air hood	1
9	5787.10075.05.10	带盘螺栓 M10×1.25×75	Blot	4
10	2160.168.008V.00.00	火花塞	Spark plug	1
11	0900.06102.00.01	台阶双头螺栓 6×102	Blot	2
12	0900.08032.00.01	双头螺栓 8×32	Blot	2
13	0010.F80.001V.00.00	气缸头	Cylinder head	1
14	3170.188.002V.00.00	定位销 12×20	Set pin	2
15	3020.F80.0020.00.00	缸头垫	Gasket, Cylinder head	1
16	7080.165.001V.00.00	燃油滤网	Fuel filter	1



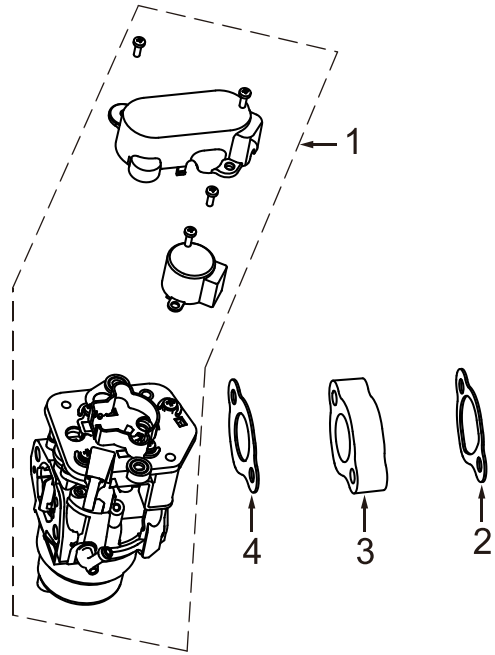
单机起动器 (Engine Starter)

序号 No.	零部件图号 Part No.	零部件名称	Description	数量 Quantity
1	2000.F80.0011.00.01	起动大罩	Starting hood	1
2	5787.06018.00.01	带盘螺栓 M6×18	Blot	5
3	2000.T70.001V.00.03	起动手柄	Starting handle	1
4	2186.T48.001V.00.00	拉手盖板	Handle cover	1
5	2000.T70.0020.00.02	拉盘	Pull the plate	1
6	5787.06014.00.01	带盘螺栓 M6×14	Blot	4



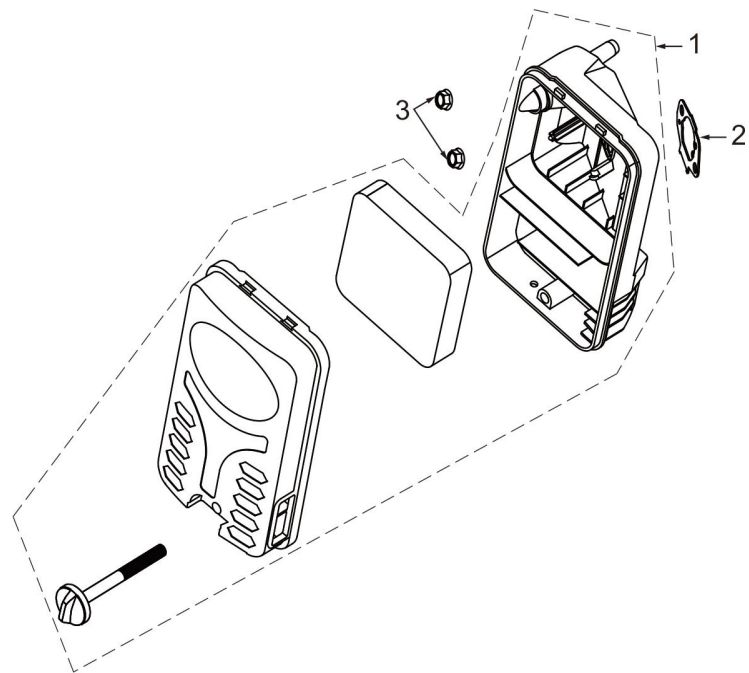
配气 (Air distribution)

序号 No.	零部件图号 Part No.	零部件名称	Description	数量 Quantity
1	5787.06014.00.01	带盘螺栓 M6×14	Blot	1
2	0085.165.001V.00.00	挡油罩	Oil seal, Intake valve	1
3	0107.F70.020V.00.00	摇臂轴挡块	Rocker shaft stop	1
4	0100.F80.001V.00.00	摇臂	Rocker ass.	2
5	0105.K92.001V.00.01	摇臂轴	Rocker shaft	2
6	0090.168.001V.00.00	气门顶帽	Valve top cap	2
7	1120.165.0020.00.00	气门锁夹	Valve collet	2
8	0060.165.0020.00.00	气门弹簧座	Valve spring seat	2
9	0040.F80.001V.00.00	气门弹簧	Valve spring	2
10	0030.F80.001V.00.00	排气门	Exhaust valve	1
11	0020.F80.001V.00.00	进气门	Intake valve	1
12	0160.F80.001V.00.00	推杆	Pusher	2
13	1030.F68.001V.00.00	挺柱	Tappet	2



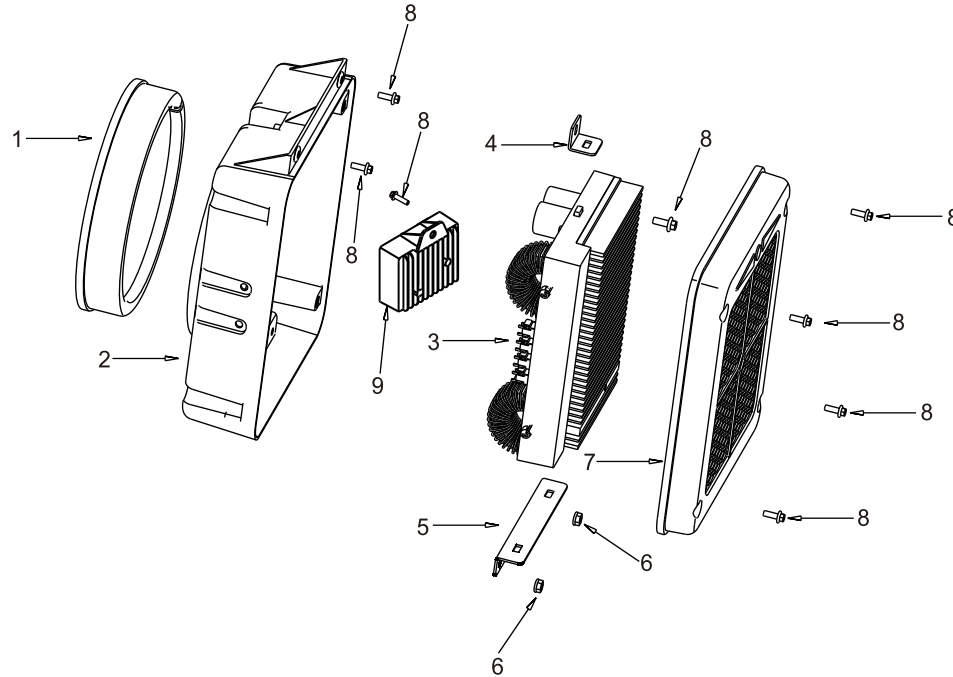
化油器部件 (Carburetor parts)

序号 No.	零部件图号 Part No.	零部件名称	Description	数量 Quantity
1	2260.F80.0080.00.00	化油器组件	Carburetor ass.	1
2	3060.F80.001V.00.00	进气口垫片	Gasket, inlet port	1
3	2300.F80.001V.00.00	化油器接块	Carburetor block	1
4	3080.F80.001V.00.00	化油器垫片	Gasket, carburetor	1
5	2360.168.R001V.00.00	油管卡圈	Tubing clamp ring	2
6	2330.154.C020.00.21	油管	Oil tube	1



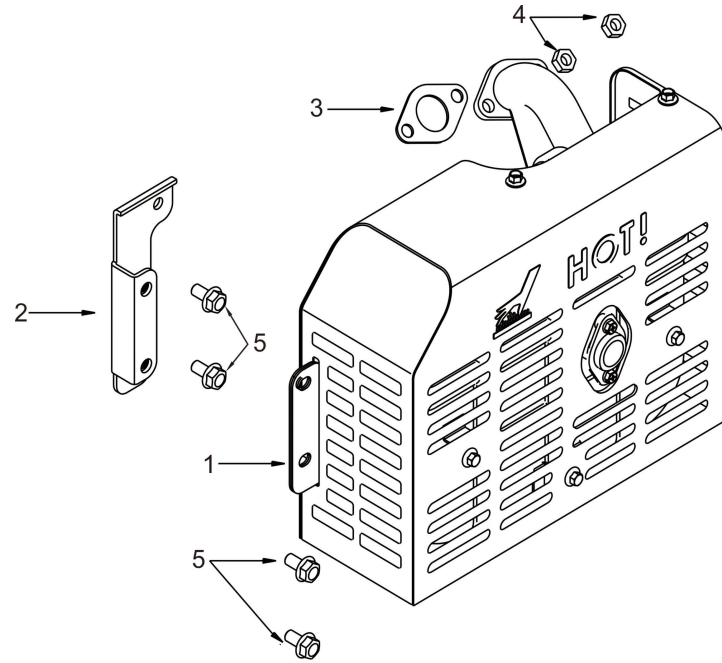
空滤器 (Air cleaner)

序号 No.	零部件图号 Part No.	零部件名称	Description	数量 Quantity
1	2280.F80.0010.00.00	空滤器组件	Air cleaner ass.	1
2	3095.168.001V.00.00	空滤器纸垫	Air filter paper pad	1
3	6177.06000.00.01	带盘防松螺母 M6	Nut	2



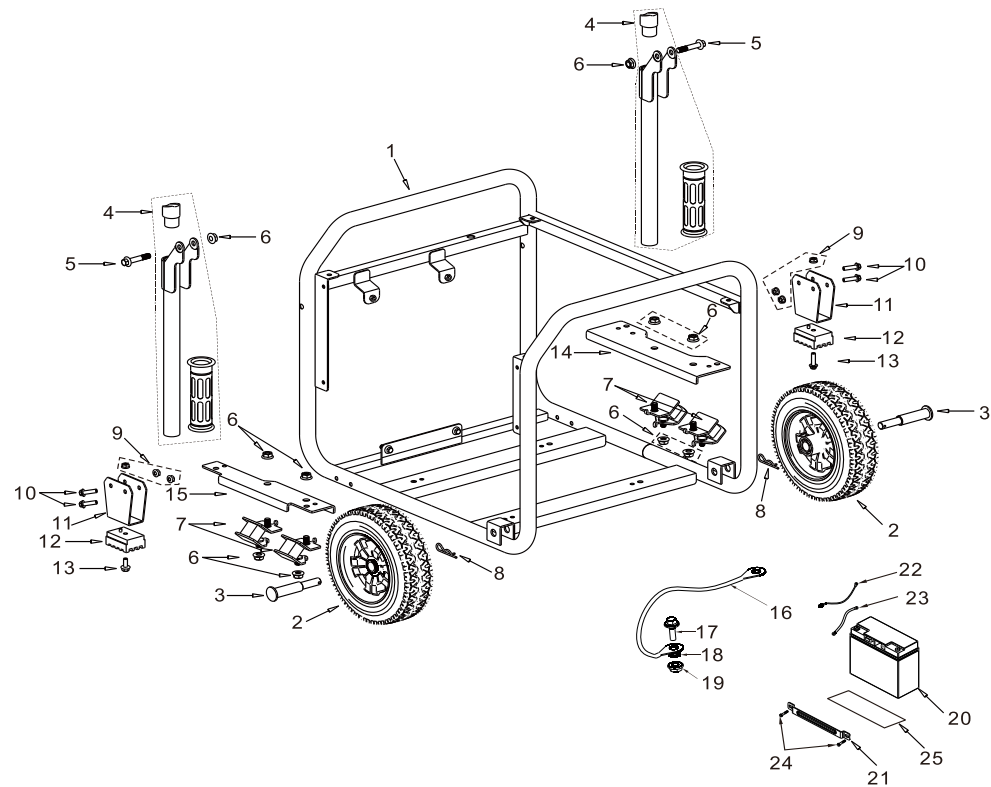
逆变器 (Inverter)

序号 No.	零部件图号 Part No.	零部件名称	Description	数量 Quantity
1	6452.526.0010.00.00	橡胶连接套	Rubber connecting sleeve	1
2	4623.526.0010.00.00	逆变器内罩	Inverter inner cover	1
3	2470.528.0100.00.00	逆变器	Inverter	1
4	8452.526.0010.00.00	逆变器支架1	Inverter bracket1	1
5	8452.526.0020.00.00	逆变器支架2	Inverter bracket2	1
6	6177.06000.00.01	带盘防松螺母M6	Locking nut with disc	2
7	4624.526.0020.00.00	逆变器外罩	Inverter cover	1
8	5787.06016.00.01	带盘螺栓M6×16	Bolt	8
9	6854.528.0021.00.00	调压整流器	DC control module	1



消声器 (Muffler parts)

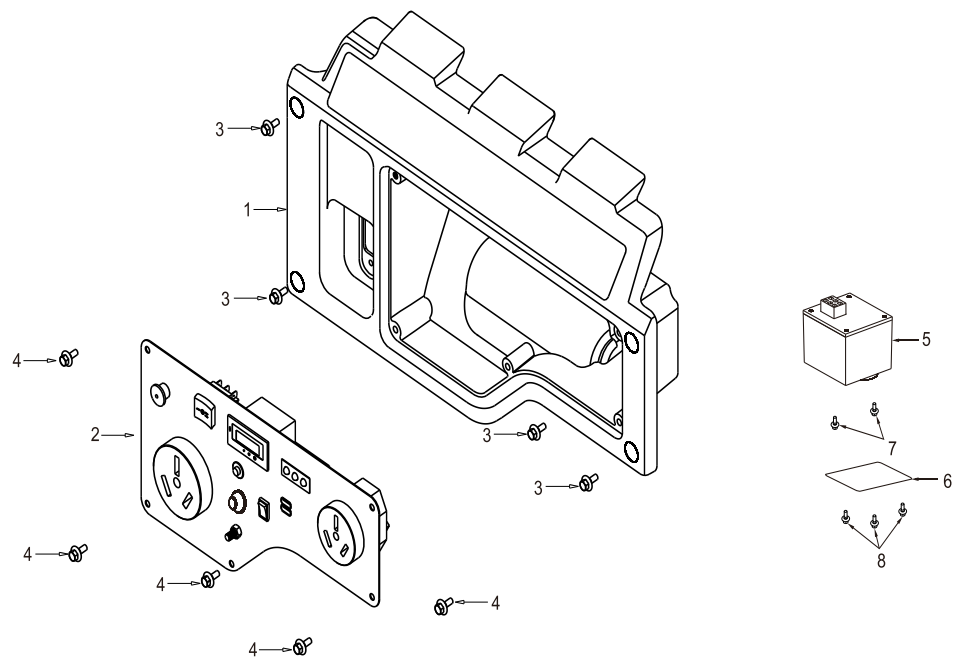
序号 No.	零部件图号 Part No.	零部件名称	Description	数量 Quantity
1	2400.526.0011.00.00	消声器部件	Muffler components	1
2	2440.526.0010.00.00	消声器支架	Muffler bracket	1
3	3100.188.004V.00.00	排气口密封垫	Exhaust port gasket	1
4	6170.08000.00.01	六角螺母M8	Hexagon nut	2
5	5787.08016.00.01	带盘螺栓M8×16	Bolt	4



机架 (Frame)

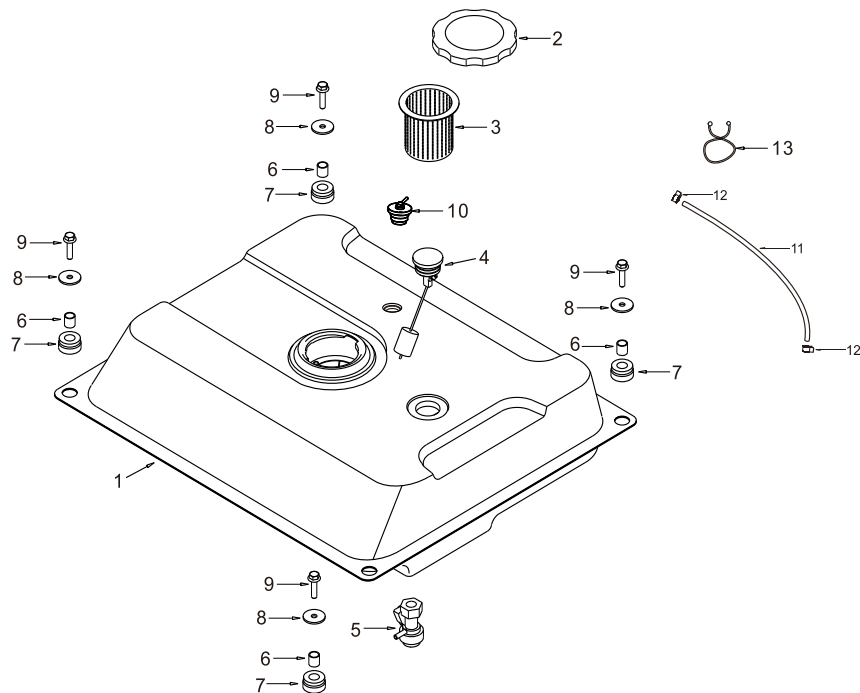
序号 No.	零部件图号 Part No.	零部件名称	Description	数量 Quantity
1	3331.526.0012.D7.00	机架部件	Frame components	1
2	3332.526.002V.00.00	轮子	Front wheel	2
3	3335.526.0010.04.00	轮轴	Wheel axle	2
4	3330.460.E91V.D7.01	扶手组件	Handle plug	2
5	5787.08045.00.01	带盘螺栓M8×45	Bolt	2
6	6177.08000.00.01	带盘防松螺母 (M8)	Locking nut with disc	10
7	3360.528.002V.00.00	减震垫2	Shock pad 2	4
8	7341.855.002V.21.00	R销 (彩锌)	R-type bolt	2
9	6177.06000.00.01	带盘防松螺母 (M6)	Locking nut with disc	6

10	5787.06040.00.01	带盘螺栓M6×40	Bolt	4
11	3334.460.G01V.D7.00	支撑座	Shock mount bracket	2
12	3360.460.002V.00.00	减震垫	Shock pad	2
13	5787.06025.00.01	带盘螺栓M6×25	Bolt	2
14	3340.526.0020.00.00	动力固定底板2	Dynamic fixed base plate 2	1
15	3340.526.0010.00.00	动力固定底板1	Dynamic fixed base plate 1	1
16	3410.467.003V.00.00	连接线	Connecting line	1
17	5787.06012.00.01	带盘螺栓M6×12	Bolt	1
18	8621.06000.00.01	外齿垫圈	External tooth washers	1
19	6177.16000.06.01	带盘防松螺母 (M16)	Locking nut with disc	1
20	2460.522.004V.00.00	电瓶	Storage battery	1
21	3330.460.102V.D7.10	电瓶压板	Pressing plate	1
22	2480.445.001V.00.00	电瓶线正极	Positive electrode of battery line	1
23	2480.445.002V.00.00	电瓶线负极	Battery line negative electrode	1
24	5787.06012.00.07	带盘螺栓M6×12	Bolt	2
25	2757.562.0010.00.00	电瓶保护垫	Battery protection pad	1



面板 (Panel)

序号 No.	零部件图号 Part No.	零部件名称	Description	数量 Quantity
1	3370.526.L220.00.99	面板后罩壳	Panel rear cover	1
2	3370.526.L220.00.99	控制面板组合	Control panel combination	1
3	5787.06012.00.01	带盘螺栓M6×12	Bolt	4
4	0818.05010.00.07	十字盘头螺钉 (5×10)	Bolt	5
5	5528.000.0050.00.00	CO报警器	CO alarm	1
6	2453.526.0010.D7.00	CO安装板	CO mounting plate	1
7	6111.469.0020.00.00	防盗螺栓M3*10	Bolt	2
8	0819.04016.10.01	十字盘头螺钉 (4×16)	Bolt	3



燃油箱部件 (Fuel tank components)

序号 No.	零部件图号 Part No.	零部件名称	Description	数量 Quantity
1	3200.526.0011.P4.00	油箱	Tank	1
2	3203.460.0020.00.00	油箱盖	Fuel tank cap	1
3	3204.460.001V.00.00	燃油滤网	Fuel filter screen	1
4	3207.460.003V.00.00	油位指示器组件	Indicator as-oil level	1
5	3210.460.D03V.00.00	油箱开关	Fuel tank switch	1
6	3213.460.001V.00.00	油箱衬套	Tank bushing	4
7	3217.460.001V.00.00	油箱安装胶套	Oil tank mounting rubber sleeve	4
8	4100.460.001V.20.07	非标平垫 $\Phi 6 \times \Phi 25 \times 1.5$	Non standard flat pad	4
10	3200.487.C01V.00.09	油箱单向阀	Tank check valve	1
11	2330.473.0050.00.00	燃油蒸发收集管	Fuel oil evaporation collection pipe	1
12	2360.458.R003V.00.00	带形油管夹 $\Phi 8$	Tubing clamps	2
13	1360.452.0010.00.00	塑料扭线环	Plastic twisted thread ring	1