

零部件图册

PARTS CATALOG



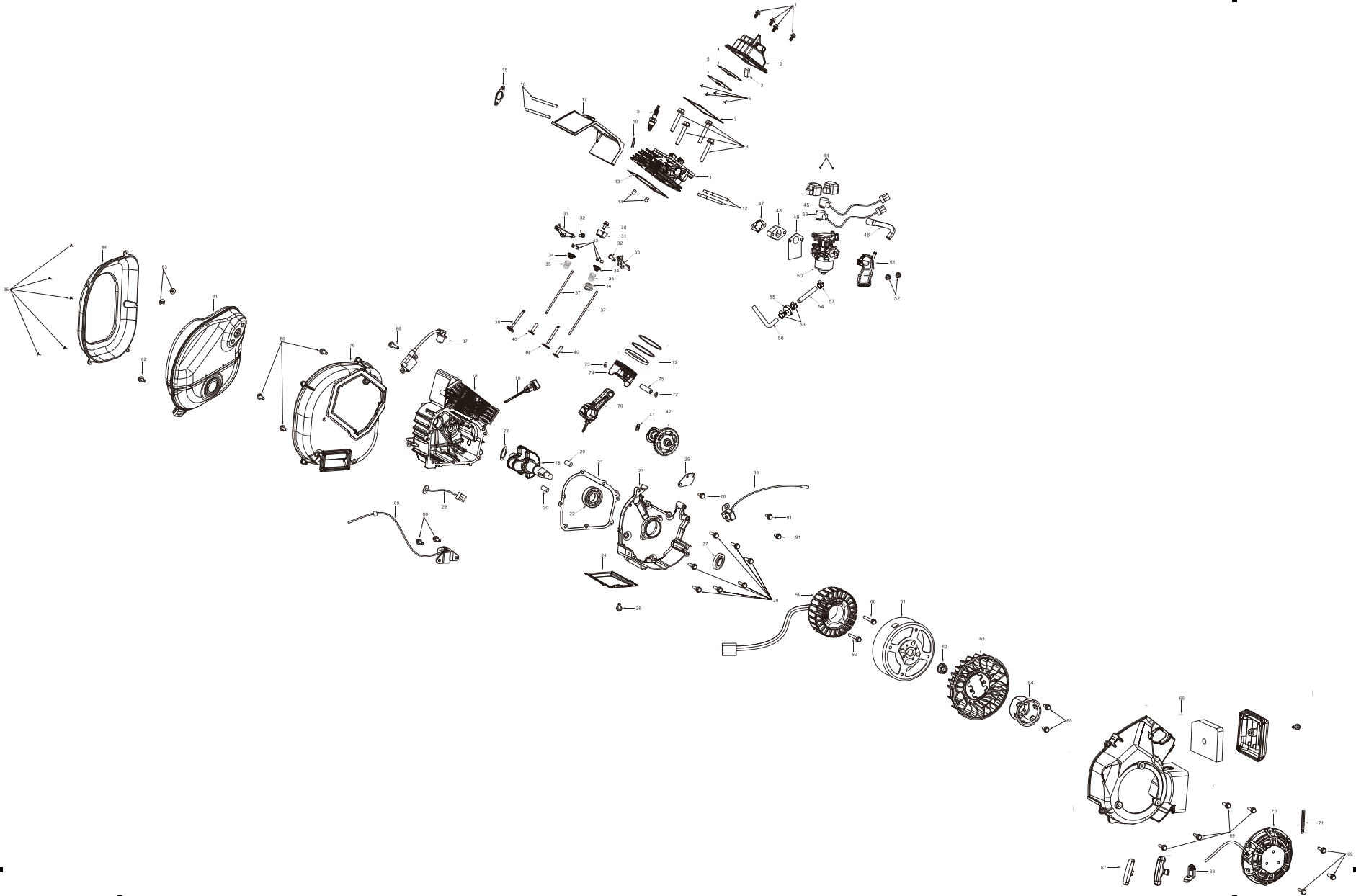
GM3500iAED

Inverter Generator

ENGINE-ITEM NUMBER

| 序号 | 零部件图号 | 零部件名称 | Description | 数量 |
|-----|----------------------|----------------|---------------------------------------------|----------|
| No. | Part No. | | | Quantity |
| 1 | 5789.06018.00.01 | 带盘螺栓M6×18 | Bolt | 4 |
| 2 | 0001.164.001V.00.00 | 缸头盖 | Cover subassembly,Cylinder head | 1 |
| 3 | 7080.165.001V.00.00 | 机油滤网45×25×12.5 | Oil screen | 1 |
| 4 | 3097.164.001V.00.00 | 呼吸槽密封垫 | Sealing gasket of breathing tank | 1 |
| 5 | 3088.164.001V.00.00 | 呼吸阀盖板 | Breathing valve cover plate | 1 |
| 6 | 0818.04008.00.01 | 十字圆头螺钉4×8 | Cross head screw | 4 |
| 7 | 3000.164.001V.00.00 | 缸头盖垫 | Cylinder head cover pad | 1 |
| 8 | 5789.08060.00.10 | 带盘螺栓M8×60 | Bolt | 4 |
| 9 | 2160.148.R001V.00.00 | 火花塞 | Spark plug | 1 |
| 10 | 1120.188.001V.00.00 | 调速摆杆锁夹 | Locking clamp of speed regulating swing rod | 1 |
| 11 | 0010.164.0060.00.00 | 气缸头 | Cylinder head | 1 |
| 12 | R0900.06092.00.00 | 双头螺栓 | Stud bolt | 2 |
| 13 | 3020.164.001V.00.00 | 缸头垫 | Gasket,Cylinder head | 1 |
| 14 | 3170.168.002V.00.00 | 定位销10×14 | Pin | 2 |
| 15 | 3100.164.001V.00.00 | 排气口密封垫 | Exhaust port gasket | 1 |
| 16 | 7071.165.001V.00.00 | 双头螺栓M6×78 | Limit plate gasket | 2 |
| 17 | 2230.164.002V.00.00 | 导风板 | Wind deflector | 1 |
| 18 | 1000.164.001V.00.00 | 曲轴箱体 | Crank case | 1 |
| 19 | 1230.164.001V.00.00 | 机油尺组件 | Dipstick assembly | 1 |
| 20 | 3170.188.001V.00.00 | 定位销8×12 | Locating pin | 2 |
| 21 | 3040.164.001V.00.00 | 曲轴箱垫 | Crankcase gasket | 1 |
| 22 | 0270.168.001V.00.00 | 轴承6205 | Bearing | 1 |
| 23 | 1010.164.001V.00.00 | 曲轴箱盖 | Crankcase cover | 1 |
| 24 | 2230.164.001V.00.00 | 下导风罩 | Lower wind deflector | 1 |
| 25 | 2090.164.001V.00.00 | 压线板 | Crimping board | 1 |
| 26 | 5787.06012.00.01 | 带盘螺栓M6×12 | Bolt | 2 |
| 27 | 3150.168.001V.00.00 | 油封25×41.25×6 | Oil seal | 1 |

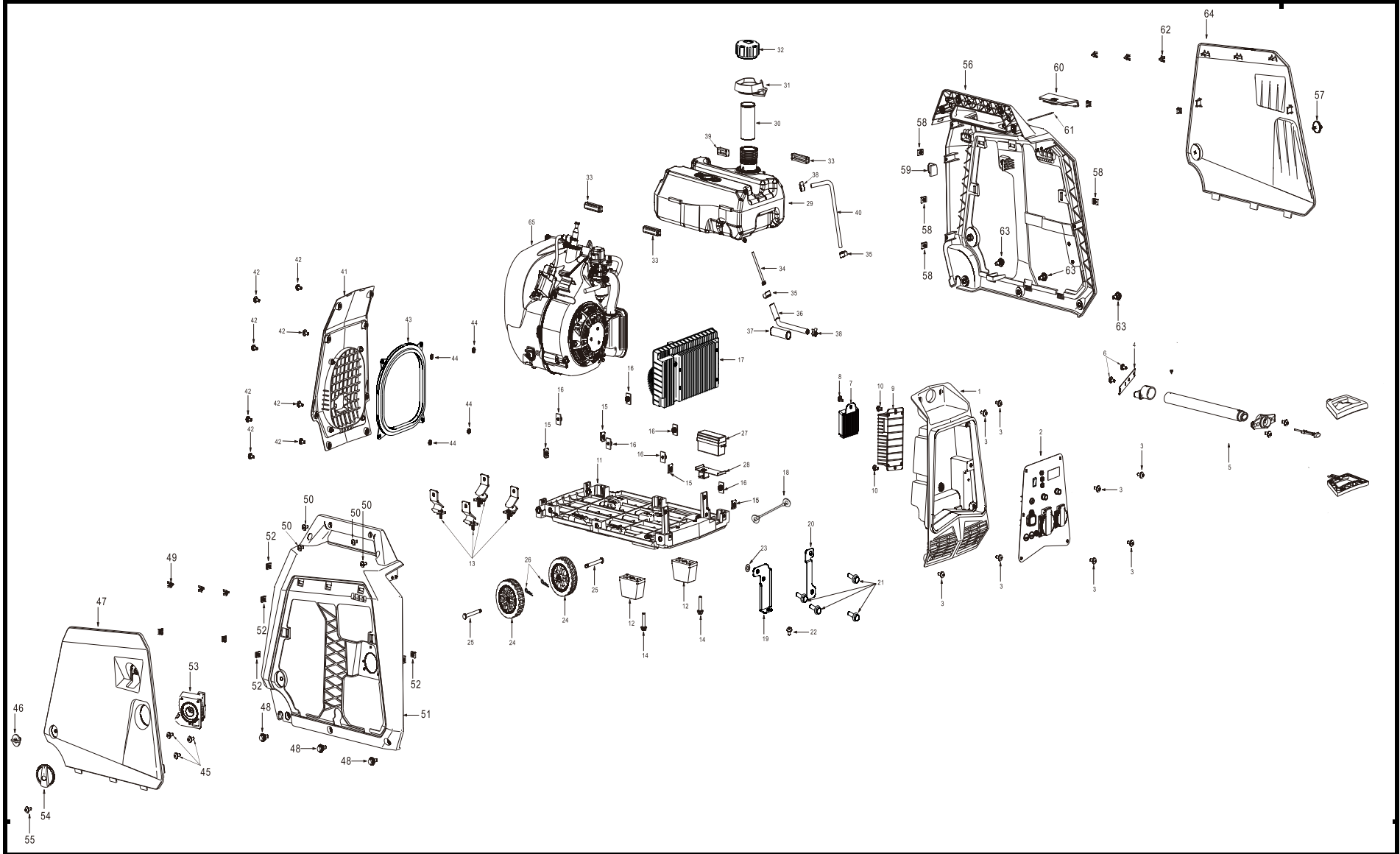
ENGINE-EXPLOSIVE VIEW



| | | | | |
|----|----------------------|-------------------|--------------------------------------|---|
| 28 | 5787.06025.00.01 | 带盘螺栓M6×25 | Bolt | 7 |
| 29 | 1025.464.0020.00.00 | 温度传感器 | Temperature sensor | 1 |
| 30 | 5787.06010.00.01 | 带盘螺栓M6×10 | Bolt | 1 |
| 31 | 0107.164.001V.00.00 | 摇臂轴挡块 | Rocker shaft stop | 1 |
| 32 | 0100.P62.R001V.00.01 | 摇臂销 | Rocker pin | 2 |
| 33 | 0100.164.001V.00.00 | 摇臂组件 | Rocker arm assembly | 2 |
| 34 | 0050.F70.R001V.00.00 | 进排气门弹簧座 | Intake and exhaust valve spring seat | 2 |
| 35 | 0040.164.0010.00.00 | 气门弹簧 | Valve spring | 2 |
| 36 | 0085.164.001V.00.00 | 挡油罩 | Oil baffle | 1 |
| 37 | 0160.164.001V.00.00 | 推杆 | Putter | 2 |
| 38 | 0030.164.001V.00.00 | 排气门 | Exhaust valve | 1 |
| 39 | 0020.164.0011.00.00 | 进气门 | Intake valve | 1 |
| 40 | 1030.164.001V.00.00 | 挺柱 | Tappet | 2 |
| 41 | 0185.164.002V.00.00 | 耐磨垫片Φ18×Φ10.2×0.5 | Wear resistant gasket | 1 |
| 42 | 1040.164.0011.00.00 | 凸轮轴部件 | Camshaft components | 1 |
| 43 | 1120.F70.R001V.00.00 | 气门夹锁 | Valve clamp lock | 4 |
| 44 | 0818.03006.10.01 | 十字圆头螺钉3×6 | Cross head screw | 2 |
| 45 | 4000.474.0040.00.00 | 步进电机 | Stepper motor | 1 |
| 46 | 2370.F80.001V.00.00 | 废气管 | Exhaust pipe | 1 |
| 47 | 3060.164.0011.00.00 | 进气口垫片 | Air inlet gasket | 1 |
| 48 | 2300.164.0011.00.00 | 化油器接块 | Carburetor block | 1 |
| 49 | 3080.164.0010.00.00 | 化油器密封垫 | Carburetor gasket | 1 |
| 50 | 2260.164.C080.00.00 | 化油器 | Carburetor | 1 |
| 51 | 2410.164.0011.00.00 | 进气弯管 | Intake elbow | 1 |
| 52 | 6177.06000.00.01 | 带盘防松螺母M6 | Locking nut with disc | 2 |
| 53 | 2360.458.R004V.00.00 | 带形油管夹Φ10 | Ribbon tubing clamp | 2 |
| 54 | 2330.469.C030.00.21 | 油管 | Tubing | 1 |
| 55 | 2325.469.0010.00.00 | 燃油过滤器 | Fuel filter | 1 |
| 56 | 2330.148.C040.00.21 | 油管 | Tubing | 1 |
| 57 | 2360.458.002V.00.00 | 带形油管夹Φ8.5 | Ribbon tubing clamp | 1 |
| 58 | 4000.435.006V.00.00 | 步进电机 | Stepper motor | 1 |
| 59 | 4000.J05.0020.00.02 | 电机定子 | Motor stator | 1 |
| 60 | 5787.06045.00.01 | 带盘螺栓M6×45 | Bolt | 2 |

| | | | | |
|----|----------------------|-------------------|-------------------------|---|
| 61 | 4000.474.001V.00.01 | 电机转子 | Motor rotor | 1 |
| 62 | 6177.14000.06.01 | 带盘螺母M14×1.5 | Nut with disc | 1 |
| 63 | 2030.T48.0020.63.00 | 叶轮 | Impeller | 1 |
| 64 | 2020.T48.001V.00.00 | 启动套 | Starting sleeve | 1 |
| 65 | 5787.06012.22.01 | 小盘螺栓M6×12 | Bolt | 2 |
| 66 | 2000.164.0011.00.00 | 导风罩组件 | Shroud as-air | 1 |
| 67 | 2000.T70.001V.04.03 | 启动手柄 | Starting handle | 1 |
| 68 | 2186.J05.0010.00.00 | 拉手盖板 | Handle cover plate | 1 |
| 69 | 5787.06018.00.01 | 带盘螺栓M6×18 | Bolt | 7 |
| 70 | 2000.148.001V.00.04 | 拉盘 | Pulling plate | 1 |
| 71 | 1220.188.002V.00.00 | 压线板 | Crimping board | 1 |
| 72 | 0210.164.001V.00.00 | 活塞环组件 | Ring as-piston | 1 |
| 73 | 0230.160.R001V.00.00 | 活塞销卡圈 | Piston pin circlip | 2 |
| 74 | 0200.164.001V.00.00 | 活塞 | Piston | 1 |
| 75 | 0220.164.001V.00.00 | 活塞销 | piston pin | 1 |
| 76 | 0190.164.001V.00.00 | 连杆组件 | Connecting rod assembly | 1 |
| 77 | 0185.164.001V.00.00 | 耐磨垫片Φ36×Φ25.3×0.5 | Wear resistant gasket | 1 |
| 78 | 0180.164.0011.60.00 | 曲轴组件 | Crankshaft assembly | 1 |
| 79 | 2400.164.001V.00.11 | 消声器外罩(前) | Muffler cover (front) | 1 |
| 80 | 5787.06018.00.01 | 带盘螺栓M6×18 | Bolt | 3 |
| 81 | 2400.474.001V.00.00 | 消声器部件 | Muffler components | 1 |
| 82 | 5789.06040.00.01 | 带盘螺栓M6×40 | Bolt | 1 |
| 83 | 6177.06000.00.01 | 带盘防松螺母M6 | Locking nut with disc | 2 |
| 84 | 2400.164.001V.00.12 | 消声器外罩(后) | Muffler cover (rear) | 1 |
| 85 | 0845.42016.00.01 | 自攻螺钉4.2×16 | Self tapping screw | 5 |
| 86 | 5789.05020.00.03 | 带盘螺栓M5×20 | Bolt | 1 |
| 87 | 1522.164.002V.00.00 | 点火线圈 | Ignition coil | 1 |
| 88 | 2050.T48.002V.00.00 | 触发线圈组件 | Trigger coil assembly | 1 |
| 89 | 1020.164.0011.00.00 | 机油报警器 | Oil alarm | 1 |
| 90 | 5787.06014.00.01 | 带盘螺栓M6×14 | Bolt | 2 |
| 91 | 5787.06012.22.01 | 小盘螺栓M6×12 | Bolt | 2 |

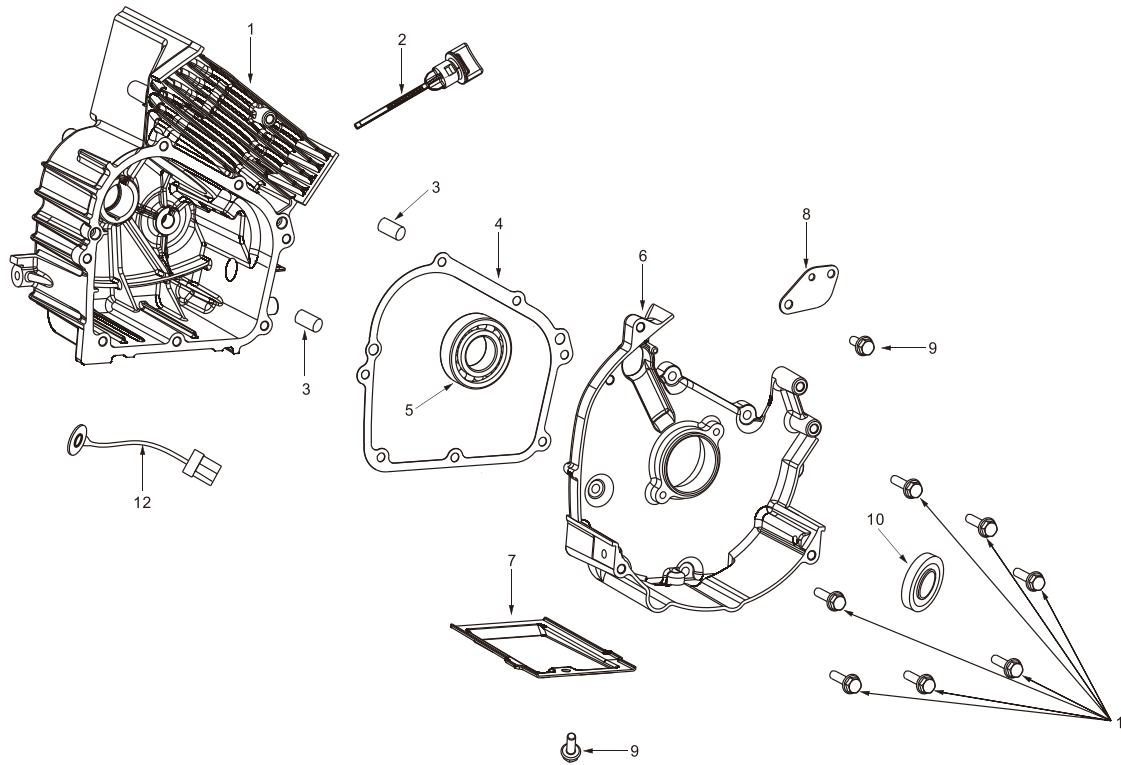
GENERATOR-EXPLOSIVE VIEW



| GENERATOR-ITEM NUMBER | | | | |
|-----------------------|---------------------|----------------|-------------------------------|----------|
| 序号 | 零部件图号 | 零部件名称 | Description | 数量 |
| No. | Part No. | | | Quantity |
| 1 | 6655.J05.0010.00.00 | 面板座 | panel bed | 1 |
| 2 | 3370.J05.0130.00.99 | 面板 | panel | 1 |
| 3 | 0818.05016.00.07 | 十字大盘头螺钉 (5×16) | Cross recessed pan head screw | 8 |
| 4 | 9461.J05.0010.00.00 | 拉杆固定板 | Pull rod fixing plate | 1 |
| 5 | 2426.J05.0020.P4.00 | 拉杆组件 | Rod components | 1 |
| 6 | 0818.05010.00.07 | 十字大盘头螺钉 (5×10) | Cross recessed pan head screw | 2 |
| 7 | 6854.528.0021.00.00 | 调压整流器 | Voltage regulating rectifier | 1 |
| 8 | 5787.05016.00.01 | 带盘螺栓M5×16 | Bolt | 1 |
| 9 | 4492.J05.1D.02.00 | 反拖启动模块 | Anti-drag startup module | 1 |
| 10 | 5789.06014.00.01 | 带盘螺栓M6×14 | Bolt | 2 |
| 11 | 3340.J05.0010.00.00 | 底板部件 | Base plate | 1 |
| 12 | 9933.J05.0010.00.00 | 支撑座 | Supporting seat | 2 |
| 13 | 3360.473.0020.00.00 | 减震垫 | Shock pad | 4 |
| 14 | 5789.06018.00.01 | 带盘螺栓M6×18 | Bolt | 4 |
| 15 | 6178.05000.00.04 | 夹片螺母 (M5) | Nut | 4 |
| 16 | 3145.469.001V.00.00 | T形螺母M6×20 | Nut | 6 |
| 17 | 2470.J05.0020.00.00 | 逆变器 | Inverter | 1 |
| 18 | 3410.467.0040.00.00 | 接地线 | Ground wire | 1 |
| 19 | 2473.474.001V.00.00 | 逆变器固定支耳1 | Fixed ears of inverter | 1 |
| 20 | 2473.474.002V.00.00 | 逆变器固定支耳2 | Fixed ears of inverter | 1 |
| 21 | 5789.06012.00.01 | 带盘螺栓M6×12 | Bolt | 4 |
| 22 | 0818.05016.00.07 | 十字大盘头螺钉5×16 | Cross recessed pan head screw | 1 |
| 23 | 4100.P75.001V.00.00 | 垫片Φ6×Φ13×2 | Shim | 1 |
| 24 | 7390.J05.0010.00.00 | 前轮 | Wheel | 2 |
| 25 | 3335.J05.0010.00.00 | 轮轴 | The shaft pin | 2 |
| 26 | 1120.188.001V.00.00 | 调速摆杆锁夹 | Speed control swing lock clip | 2 |
| 27 | 2461.J05.0010.00.00 | 锂电池 | Lithium battery | 1 |

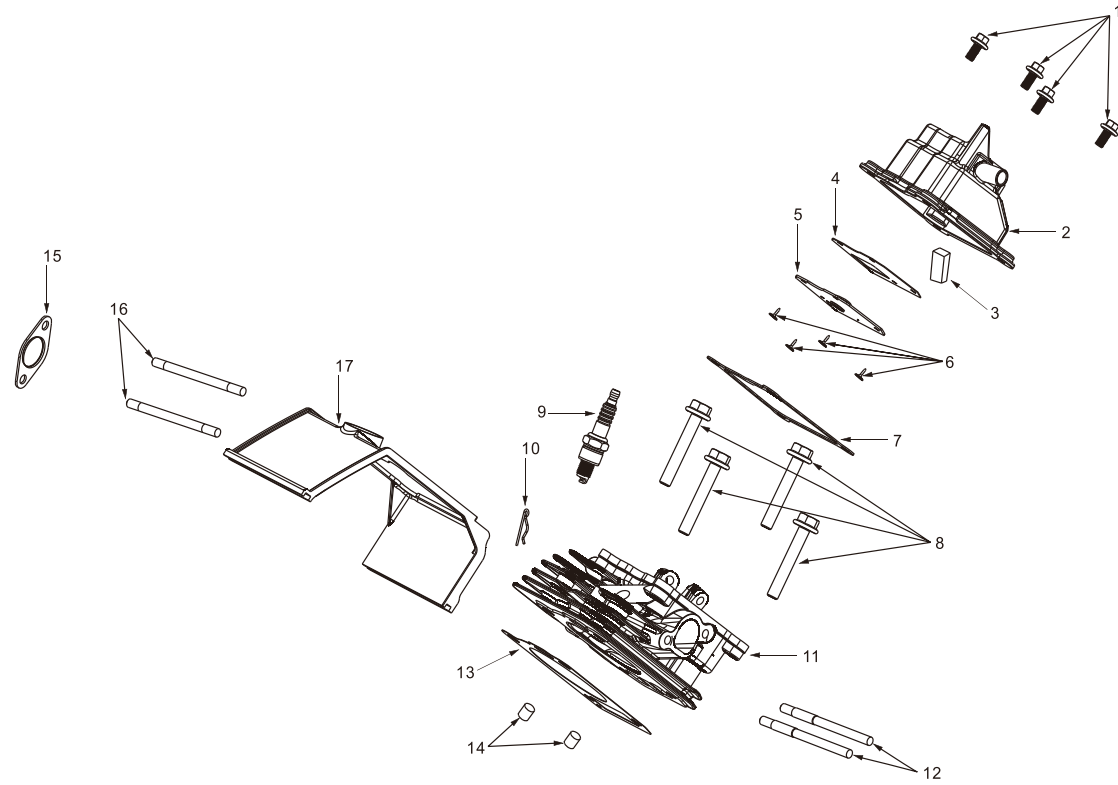
| | | | | |
|----|----------------------|----------------|--------------------------------------|---|
| 28 | 3331.J05.0010.00.01 | 电池盒 | Cell box | 1 |
| 29 | 3200.J05.0010.00.00 | 油箱部件 | Tank, Fuel | 1 |
| 30 | 3200.467.001V.00.02 | 燃油滤网 | Fuel filter | 1 |
| 31 | 3200.J05.0010.00.03 | 注油口胶套 | Sheath | 1 |
| 32 | 3200.474.C010.00.01 | 油箱盖 | Tank cap | 1 |
| 33 | 7868.469.001V.00.00 | 油箱支撑胶套NR | Sheath | 3 |
| 34 | 3208.P70.001V.00.00 | 过滤嘴 | Filt tip | 1 |
| 35 | 2360.458.R007V.00.00 | 带形油管夹Φ11 | Ferrule | 2 |
| 36 | 2330.469.C010.00.21 | 油管 | Oil tube | 1 |
| 37 | 2332.467.006V.00.00 | 硅胶保护套Φ10×50 | Sheath | 1 |
| 38 | 2360.458.R003V.00.00 | 带形油管夹Φ8 | Ferrule | 2 |
| 39 | 5522.467.003V.00.00 | 油箱减震胶套C | Damping rubber sleeve for oil tank | 1 |
| 40 | 2330.528.C080.00.00 | 燃油蒸发收集管 | Fuel oil evaporation collection pipe | 1 |
| 41 | 2420.J05.0010.04.00 | 消声器护罩 | Muffler shield | 1 |
| 42 | 0818.05016.00.07 | 十字大盘头螺钉(5×16) | Screw | 8 |
| 43 | 7824.474.001V.00.00 | 消声器密封胶套 | Muffler sealant sleeve | 1 |
| 44 | 5598.467.001V.00.00 | 梅花孔挡圈 | Plum ring | 4 |
| 45 | 0819.04212.00.01 | 十字沉头自攻螺钉4.2×12 | Cross countersunk head tapping screw | 3 |
| 46 | 1560.J05.0010.04.00 | 旋钮 | rotary knob | 1 |
| 47 | 5596.J05.0010.P4.00 | 左外观盖板 | ornament shell | 1 |
| 48 | 7344.446.0010.00.00 | 内六角螺栓 | Bolt | 3 |
| 49 | 5324.J05.0010.00.00 | 夹片卡 | Clip | 5 |
| 50 | 0818.05016.00.07 | 十字大盘头螺钉5×16 | Screw | 4 |
| 51 | 2220.J05.0010.04.00 | 左外壳部件 | Left shell | 1 |
| 52 | 6178.05000.00.04 | 夹片螺母(M5) | Nut | 4 |
| 53 | 2140.464.001V.00.00 | 三合一开关 | Three in one switch | 1 |
| 54 | 2141.467.001V.P4.00 | 三合一开关手柄 | Three in one switch handle | 1 |
| 55 | 0818.04014.00.01 | 螺钉M4×14 | Screw | 1 |
| 56 | 2222.J05.0010.04.00 | 右外壳部件 | Right shell | 1 |
| 57 | 1560.J05.0010.04.00 | 旋钮 | Rotary knob | 1 |
| 58 | 6178.05000.00.04 | 夹片螺母(M5) | Nut | 4 |
| 59 | 6234.467.002V.00.00 | 发动机缓冲胶垫B | sheath | 1 |
| 60 | 4259.J05.0010.04.00 | 火花塞盖板 | Spark-plug outer cover | 1 |

| | | | | |
|----|---------------------|--------------|------------------------|---|
| 61 | 4562.469.001V.00.00 | 防丢橡胶条NR | Anti loss rubber strip | 1 |
| 62 | 5324.J05.0010.00.00 | 夹片卡 | Clip | 5 |
| 63 | 7344.446.0010.00.00 | 内六角螺栓 | Bolt | 3 |
| 64 | 5596.J05.0020.P4.00 | 右外观盖板 | Right exterior cover | 1 |
| 65 | BP00.083.007.06 | DK164F/P-2动力 | Engine | 1 |



曲轴箱 (Crankcase)

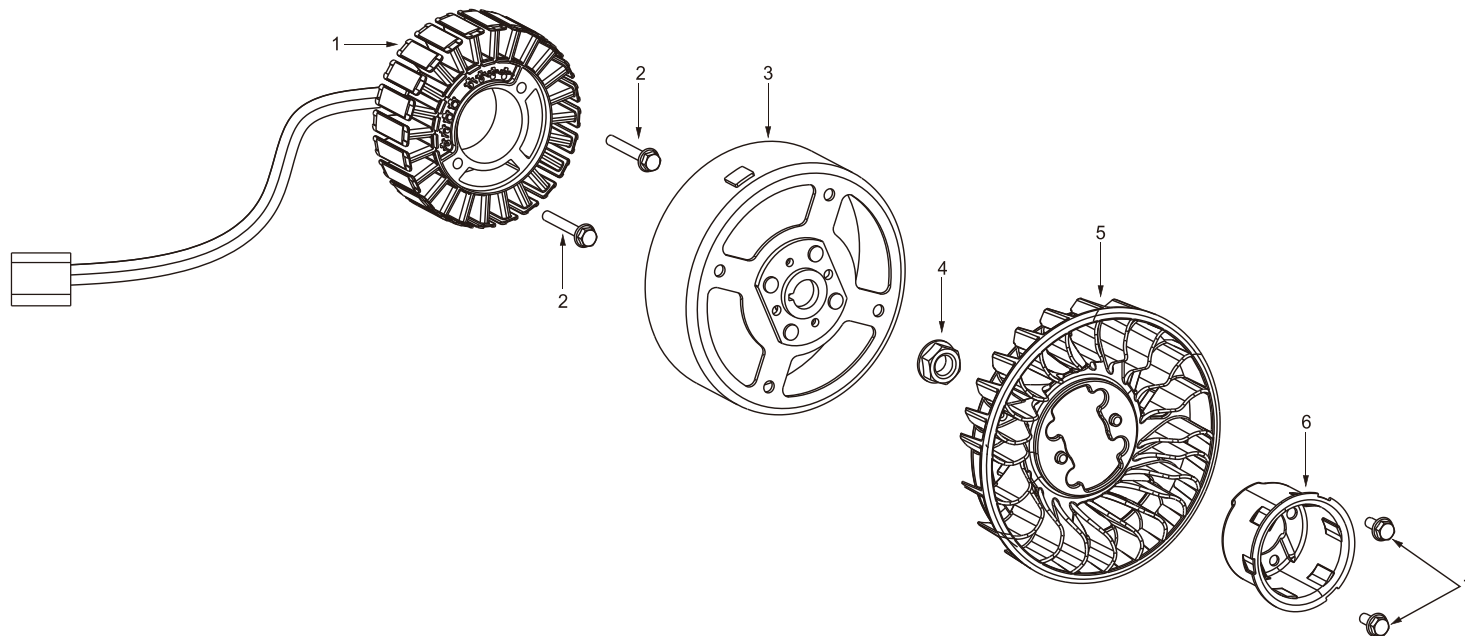
| 序号 No. | 零部件图号 Part No. | 零部件名称 | Description | 数量 Quantity |
|-----------|---------------------|--------------|----------------------|----------------|
| 1 | 1000.164.001V.00.00 | 曲轴箱体 | Crank case | 1 |
| 2 | 1230.164.001V.00.00 | 机油尺组件 | Dipstick assembly | 1 |
| 3 | 3170.188.001V.00.00 | 定位销8×12 | Locating pin | 2 |
| 4 | 3040.164.001V.00.00 | 曲轴箱垫 | Crankcase gasket | 1 |
| 5 | 0270.168.001V.00.00 | 轴承6205 | Bearing | 1 |
| 6 | 1010.164.001V.00.00 | 曲轴箱盖 | Crankcase cover | 1 |
| 7 | 2230.164.001V.00.00 | 下导风罩 | Lower wind deflector | 1 |
| 8 | 2090.164.001V.00.00 | 压线板 | Crimping board | 1 |
| 9 | 5787.06012.00.01 | 带盘螺栓M6×12 | Bolt | 2 |
| 10 | 3150.168.001V.00.00 | 油封25×41.25×6 | Oil seal | 1 |
| 11 | 5787.06025.00.01 | 带盘螺栓M6×25 | Bolt | 7 |
| 12 | 1025.464.0020.00.00 | 温度传感器 | Temperature sensor | 1 |



缸头盖组件 (Cylinder head cover assembly)

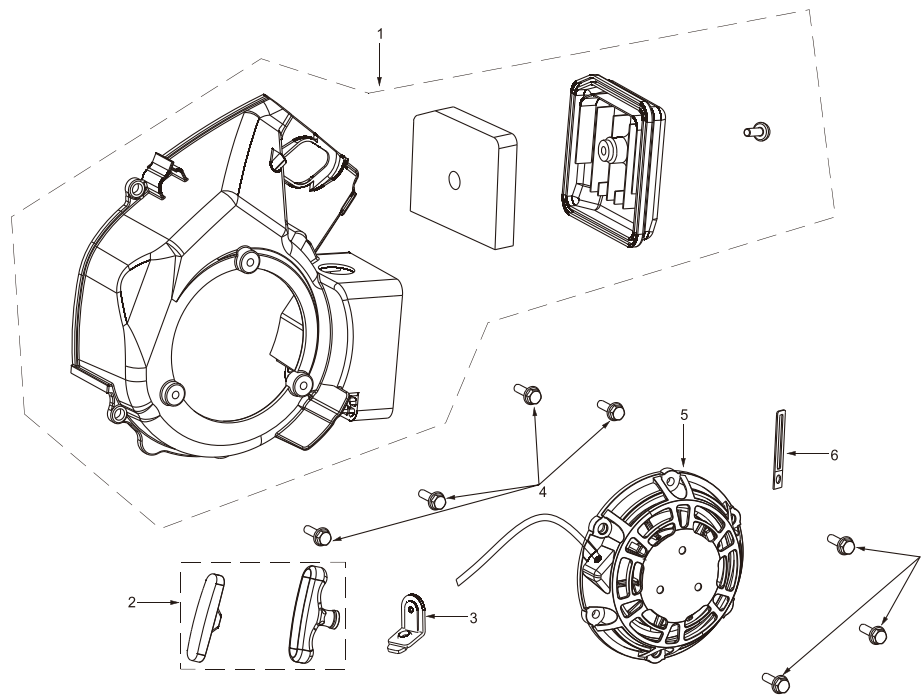
| 序号 No. | 零部件图号 Part No. | 零部件名称 | Description | 数量 Quantity |
|-----------|----------------------|----------------|---------------------------------------------|----------------|
| 1 | 5789.06018.00.01 | 带盘螺栓M6×18 | Bolt | 4 |
| 2 | 0001.164.001V.00.00 | 缸头盖 | Cover subassembly,Cylinder head | 1 |
| 3 | 7080.165.001V.00.00 | 机油滤网45×25×12.5 | Oil screen | 1 |
| 4 | 3097.164.001V.00.00 | 呼吸槽密封垫 | Sealing gasket of breathing tank | 1 |
| 5 | 3088.164.001V.00.00 | 呼吸阀盖板 | Breathing valve cover plate | 1 |
| 6 | 0818.04008.00.01 | 十字圆头螺钉4×8 | Cross head screw | 4 |
| 7 | 3000.164.001V.00.00 | 缸头盖垫 | Cylinder head cover pad | 1 |
| 8 | 5789.08060.00.10 | 带盘螺栓M8×60 | Bolt | 4 |
| 9 | 2160.148.R001V.00.00 | 火花塞 | Spark plug | 1 |
| 10 | 1120.188.001V.00.00 | 调速摆杆锁夹 | Locking clamp of speed regulating swing rod | 1 |

| | | | | |
|----|---------------------|-----------|----------------------|---|
| 11 | 0010.164.0060.00.00 | 气缸头 | Cylinder head | 1 |
| 12 | R0900.06092.00.00 | 双头螺栓 | Stud bolt | 2 |
| 13 | 3020.164.001V.00.00 | 缸头垫 | Gasket,Cylinder head | 1 |
| 14 | 3170.168.002V.00.00 | 定位销10×14 | Pin | 2 |
| 15 | 3100.164.001V.00.00 | 排气口密封垫 | Exhaust port gasket | 1 |
| 16 | 7071.165.001V.00.00 | 双头螺栓M6×78 | Limit plate gasket | 2 |
| 17 | 2230.164.002V.00.00 | 导风板 | Wind deflector | 1 |



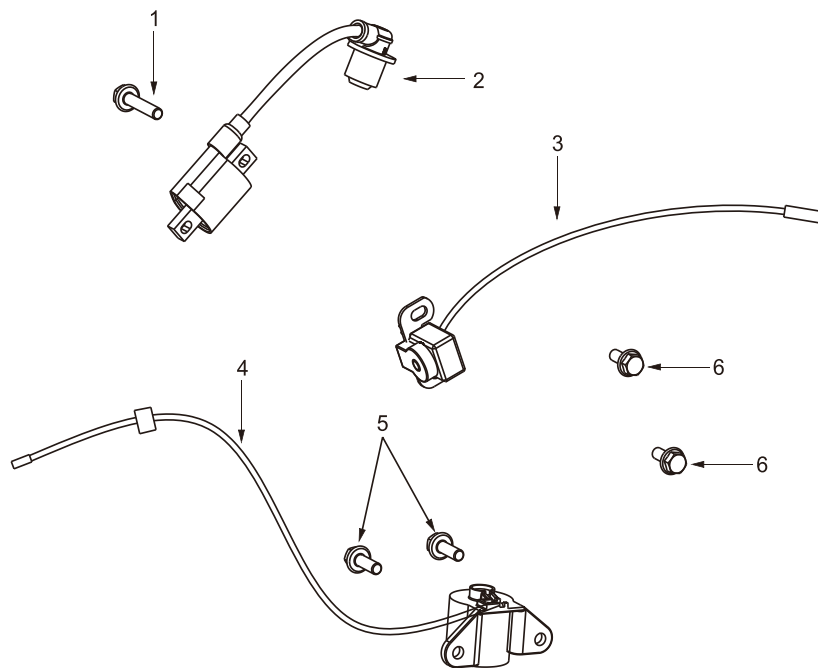
电机组件 (Motor assembly)

| 序号 No. | 零部件图号 Part No. | 零部件名称 | Description | 数量 Quantity |
|-----------|-------------------------|-------------|-----------------|----------------|
| 1 | 4000. J05. 0020. 00. 02 | 电机定子 | Motor stator | 1 |
| 2 | 5787. 06045. 00. 01 | 带盘螺栓M6×45 | Bolt | 2 |
| 3 | 4000. 474. 001V. 00. 01 | 电机转子 | Motor rotor | 1 |
| 4 | 6177. 14000. 06. 01 | 带盘螺母M14×1.5 | Nut with disc | 1 |
| 5 | 2030. T48. 0020. 63. 00 | 叶轮 | Impeller | 1 |
| 6 | 2020. T48. 001V. 00. 00 | 启动套 | Starting sleeve | 1 |
| 7 | 5787. 06012. 22. 01 | 小盘螺栓M6×12 | Bolt | 2 |



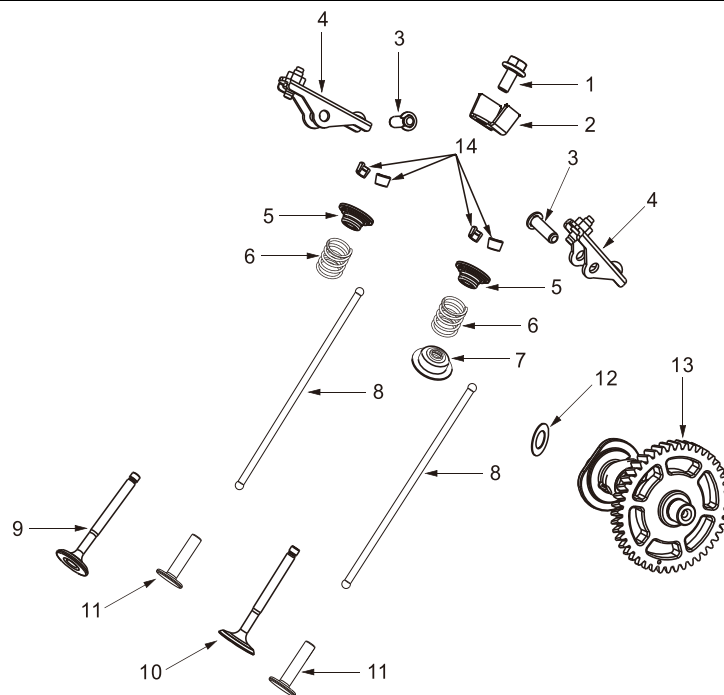
单机起动器 (Engine Starter)

| 序号 No. | 零部件图号 Part No. | 零部件名称 | Description | 数量 Quantity |
|-----------|---------------------|-----------|--------------------|----------------|
| 1 | 2000.164.0011.00.00 | 导风罩组件 | Shroud as-air | 1 |
| 2 | 2000.T70.001V.04.03 | 启动手柄 | Starting handle | 1 |
| 3 | 2186.J05.0010.00.00 | 拉手盖板 | Handle cover plate | 1 |
| 4 | 5787.06018.00.01 | 带盘螺栓M6×18 | Bolt | 7 |
| 5 | 2000.148.001V.00.04 | 拉盘 | Pulling plate | 1 |
| 6 | 1220.188.002V.00.00 | 压线板 | Crimping board | 1 |



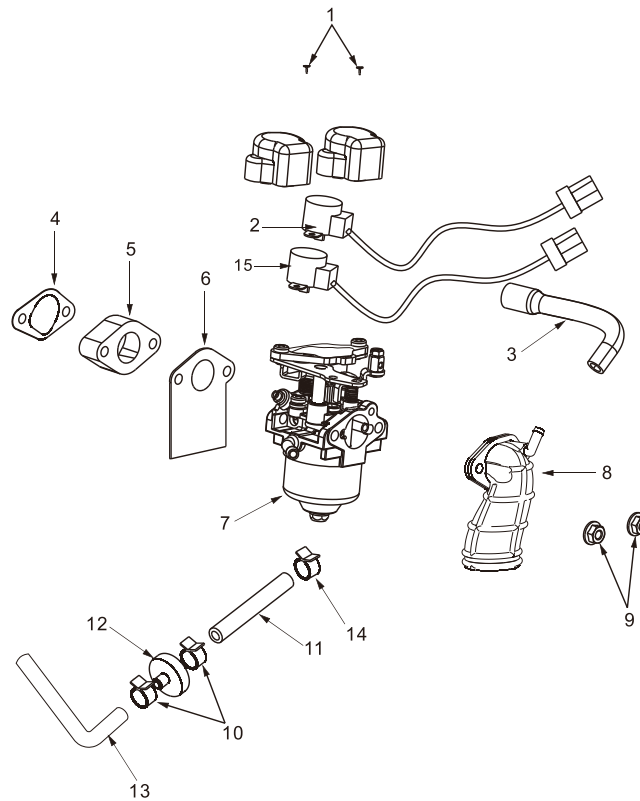
点火线圈/机油报警器/触发线圈 (IGNITION COIL/WARNING DEVICE/TRIGGER COIL)

| 序号 No. | 零部件图号 Part No. | 零部件名称 | Description | 数量 Quantity |
|-----------|---------------------|-----------|-----------------------|----------------|
| 1 | 5789.05020.00.03 | 带盘螺栓M5×20 | Bolt | 1 |
| 2 | 1522.164.002V.00.00 | 点火线圈 | Ignition coil | 1 |
| 3 | 2050.T48.002V.00.00 | 触发线圈组件 | Trigger coil assembly | 1 |
| 4 | 1020.164.0011.00.00 | 机油报警器 | Oil alarm | 1 |
| 5 | 5787.06014.00.01 | 带盘螺栓M6×14 | Bolt | 2 |
| 6 | 5787.06012.22.01 | 小盘螺栓M6×12 | Bolt | 2 |



配气机构 (Camshaft parts)

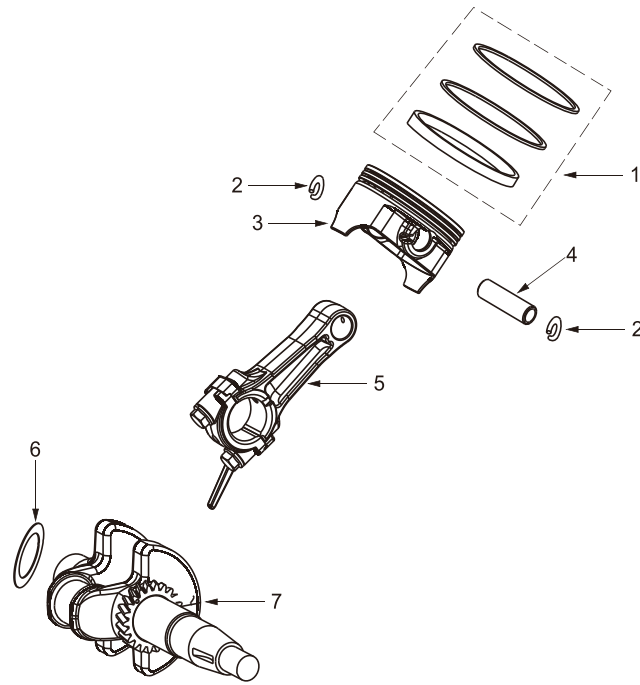
| 序号 | 零部件图号 | 零部件名称 | Description | 数量 |
|-----|----------------------|-------------------|--------------------------------------|----------|
| No. | Part No. | | | Quantity |
| 1 | 5787.06010.00.01 | 带盘螺栓M6×10 | Bolt | 1 |
| 2 | 0107.164.001V.00.00 | 摇臂轴挡块 | Rocker shaft stop | 1 |
| 3 | 0100.P62.R001V.00.01 | 摇臂销 | Rocker pin | 2 |
| 4 | 0100.164.001V.00.00 | 摇臂组件 | Rocker arm assembly | 2 |
| 5 | 0050.F70.R001V.00.00 | 进排气门弹簧座 | Intake and exhaust valve spring seat | 2 |
| 6 | 0040.164.0010.00.00 | 气门弹簧 | Valve spring | 2 |
| 7 | 0085.164.001V.00.00 | 挡油罩 | Oil baffle | 1 |
| 8 | 0160.164.001V.00.00 | 推杆 | Putter | 2 |
| 9 | 0030.164.001V.00.00 | 排气门 | Exhaust valve | 1 |
| 10 | 0020.164.0011.00.00 | 进气门 | Intake valve | 1 |
| 11 | 1030.164.001V.00.00 | 挺柱 | Tappet | 2 |
| 12 | 0185.164.002V.00.00 | 耐磨垫片Φ18×Φ10.2×0.5 | Wear resistant gasket | 1 |
| 13 | 1040.164.0011.00.00 | 凸轮轴部件 | Camshaft components | 1 |
| 14 | 1120.F70.R001V.00.00 | 气门夹锁 | Valve clamp lock | 4 |



化油器部件 (Carburetor parts)

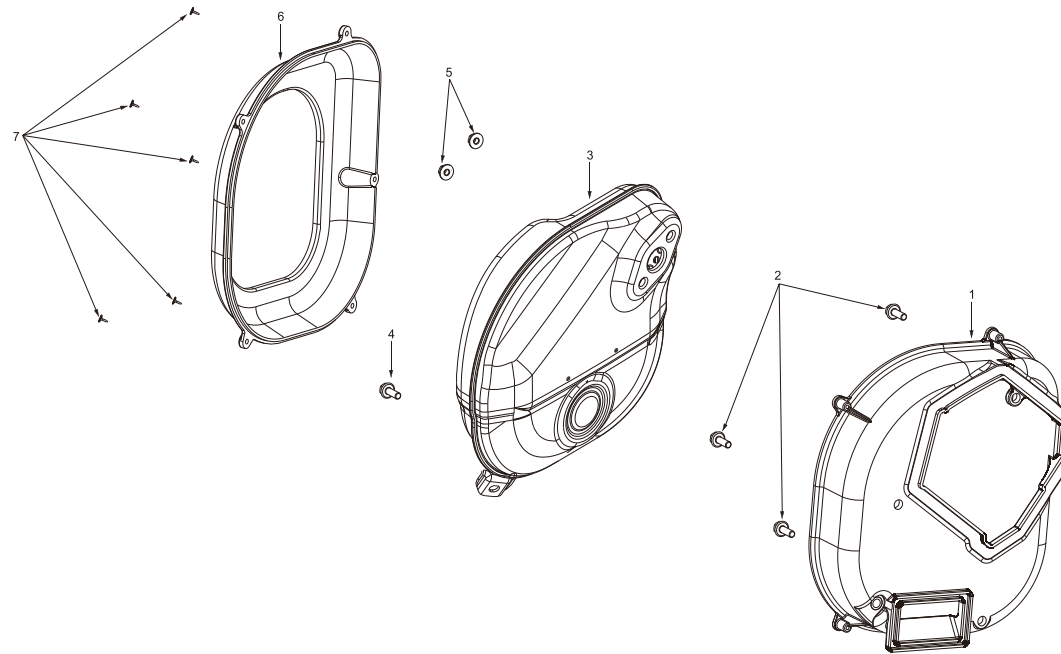
| 序号 No. | 零部件图号 Part No. | 零部件名称 | Description | 数量 Quantity |
|-----------|---------------------|-----------|-------------------|----------------|
| 1 | 0818.03006.10.01 | 十字圆头螺钉3×6 | Cross head screw | 2 |
| 2 | 4000.474.0040.00.00 | 步进电机 | Stepper motor | 1 |
| 3 | 2370.F80.001V.00.00 | 废气管 | Exhaust pipe | 1 |
| 4 | 3060.164.0011.00.00 | 进气口垫片 | Air inlet gasket | 1 |
| 5 | 2300.164.0011.00.00 | 化油器接块 | Carburetor block | 1 |
| 6 | 3080.164.0010.00.00 | 化油器密封垫 | Carburetor gasket | 1 |
| 7 | 2260.164.C090.00.00 | 化油器 | Carburetor | 1 |
| 8 | 2410.164.0011.00.00 | 进气弯管 | Intake elbow | 1 |

| | | | | |
|----|----------------------|-----------|-----------------------|---|
| 9 | 6177.06000.00.01 | 带盘防松螺母M6 | Locking nut with disc | 2 |
| 10 | 2360.458.R004V.00.00 | 带形油管夹Φ10 | Ribbon tubing clamp | 2 |
| 11 | 2330.469.C030.00.22 | 油管 | Tubing | 1 |
| 12 | 2325.469.0010.00.00 | 燃油过滤器 | Fuel filter | 1 |
| 13 | 2330.148.C040.00.22 | 油管 | Tubing | 1 |
| 14 | 2360.458.002V.00.00 | 带形油管夹Φ8.5 | Ribbon tubing clamp | 1 |
| 15 | 4000.435.006V.00.00 | 步进电机 | Stepper motor | 1 |



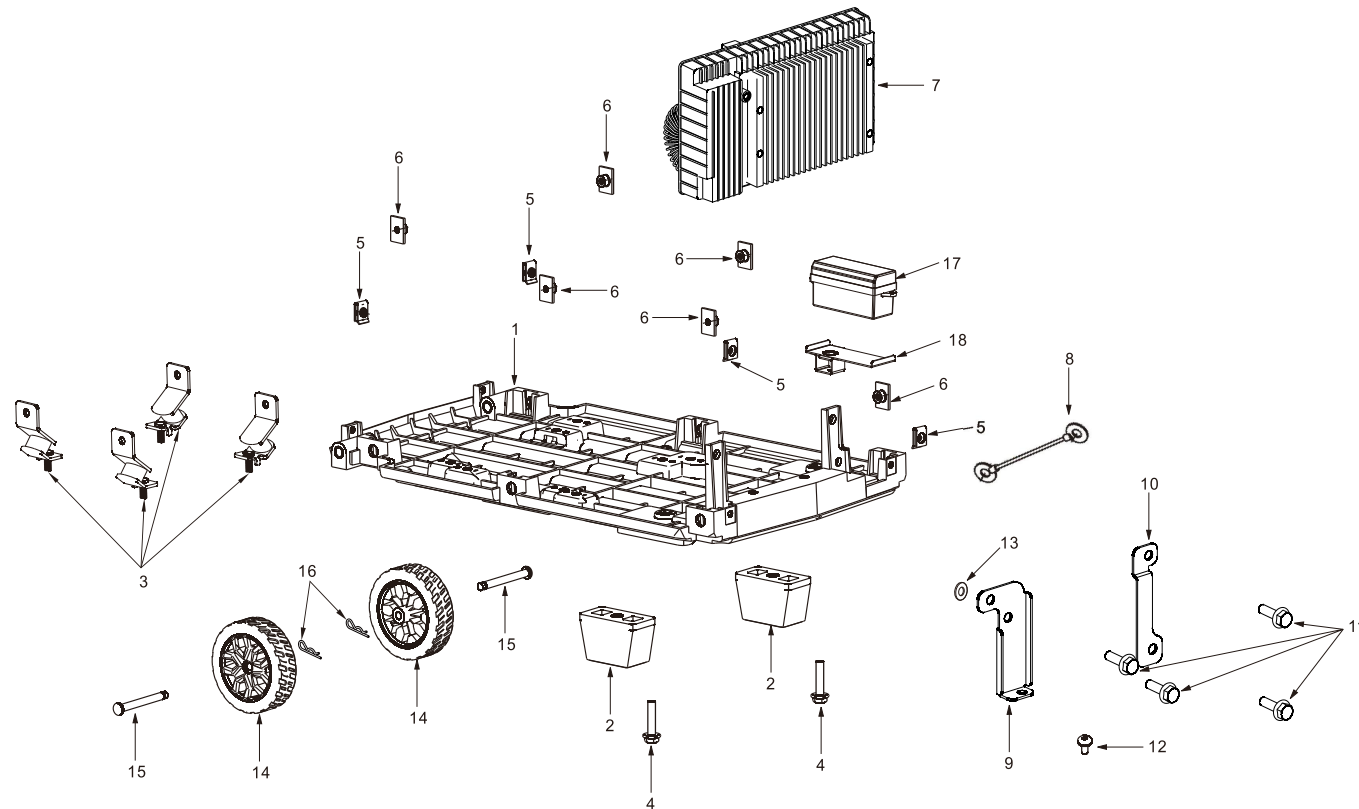
活塞组件 (Piston parts)

| 序号 No. | 零部件图号 Part No. | 零部件名称 | Description | 数量 Quantity |
|-----------|----------------------|--------------------------------------------|-------------------------|----------------|
| 1 | 0210.164.001V.00.00 | 活塞环组件 | Ring as-piston | 1 |
| 2 | 0230.160.R001V.00.00 | 活塞销卡圈 | Piston pin circlip | 2 |
| 3 | 0200.164.001V.00.00 | 活塞 | Piston | 1 |
| 4 | 0220.164.001V.00.00 | 活塞销 | piston pin | 1 |
| 5 | 0190.164.001V.00.00 | 连杆组件 | Connecting rod assembly | 1 |
| 6 | 0185.164.001V.00.00 | 耐磨垫片 $\Phi 36 \times \Phi 25.3 \times 0.5$ | Wear resistant gasket | 1 |
| 7 | 0180.164.0011.60.00 | 曲轴组件 | Crankshaft assembly | 1 |



消声器 (Muffler parts)

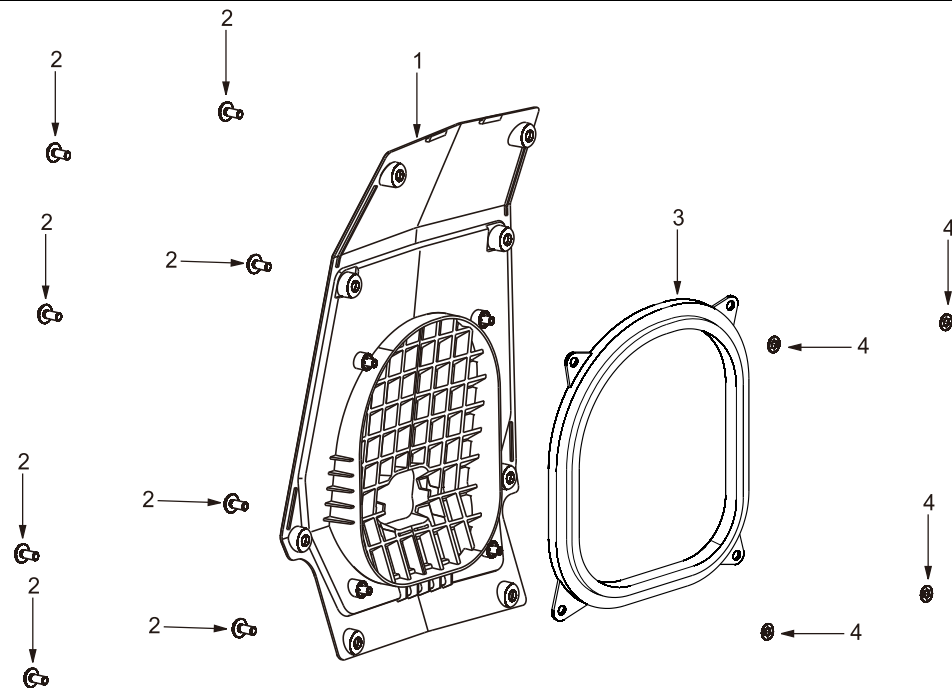
| 序号 No. | 零部件图号 Part No. | 零部件名称 | Description | 数量 Quantity |
|-----------|---------------------|------------|-----------------------|----------------|
| 1 | 2400.164.001V.00.11 | 消声器外罩 (前) | Muffler cover (front) | 1 |
| 2 | 5787.06018.00.01 | 带盘螺栓M6×18 | Bolt | 3 |
| 3 | 2400.474.0030.00.00 | 消声器部件 | Muffler components | 1 |
| 4 | 5789.06040.00.01 | 带盘螺栓M6×40 | Bolt | 1 |
| 5 | 6177.06000.00.01 | 带盘防松螺母M6 | Locking nut with disc | 2 |
| 6 | 2400.164.001V.00.12 | 消声器外罩 (后) | Muffler cover (rear) | 1 |
| 7 | 0845.42016.00.01 | 自攻螺钉4.2×16 | Self tapping screw | 5 |



底板/逆变器 (Backplane / Inverter)

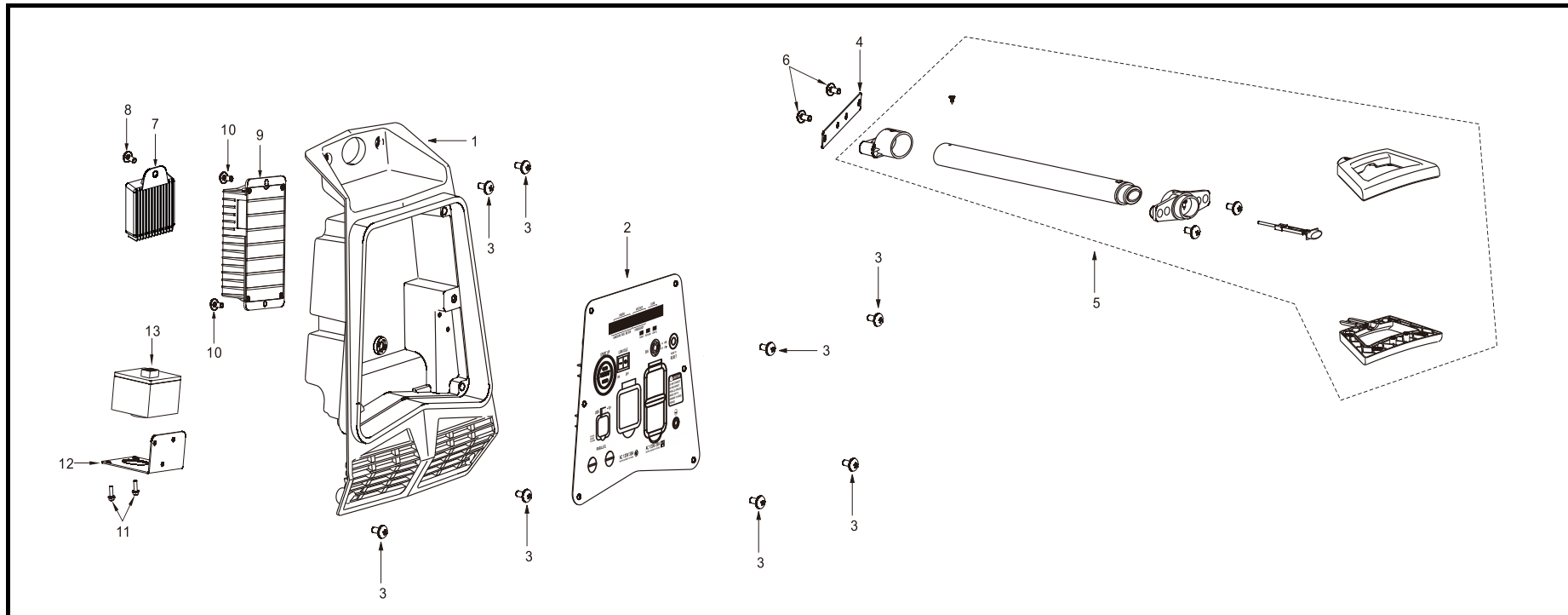
| 序号 No. | 零部件图号 Part No. | 零部件名称 | Description | 数量 Quantity |
|-----------|---------------------|-----------|------------------------|----------------|
| 1 | 3340.J05.0010.00.00 | 底板部件 | Base plate | 1 |
| 2 | 9933.J05.0010.00.00 | 支撑座 | Supporting seat | 2 |
| 3 | 3360.473.0020.00.00 | 减震垫 | Shock pad | 4 |
| 4 | 5789.06018.00.01 | 带盘螺栓M6×18 | Bolt | 4 |
| 5 | 6178.05000.00.04 | 夹片螺母 (M5) | Nut | 4 |
| 6 | 3145.469.001V.00.00 | T形螺母M6×20 | Nut | 6 |
| 7 | 2470.J05.0050.00.00 | 逆变器 | Inverter | 1 |
| 8 | 3410.467.0050.00.00 | 接地线 | Ground wire | 1 |
| 9 | 2473.474.001V.00.00 | 逆变器固定支耳1 | Fixed ears of inverter | 1 |

| | | | | |
|----|---------------------|-------------|-------------------------------|---|
| 10 | 2473.474.002V.00.00 | 逆变器固定支耳2 | Fixed ears of inverter | 1 |
| 11 | 5789.06012.00.01 | 带盘螺栓M6×12 | Bolt | 4 |
| 12 | 0818.05016.00.07 | 十字大盘头螺钉5×16 | Cross recessed pan head screw | 1 |
| 13 | 4100.P75.001V.00.00 | 垫片Φ6×Φ13×2 | Shim | 1 |
| 14 | 7390.J05.0010.00.00 | 前轮 | Wheel | 2 |
| 15 | 3335.J05.0010.00.00 | 轮轴 | The shaft pin | 2 |
| 16 | 1120.188.001V.00.00 | 调速摆杆锁夹 | Speed control swing lock clip | 2 |
| 17 | 2461.J05.0010.00.00 | 锂电池 | Lithium battery | 1 |
| 18 | 3331.J05.0010.00.01 | 电池盒 | Cell box | 1 |



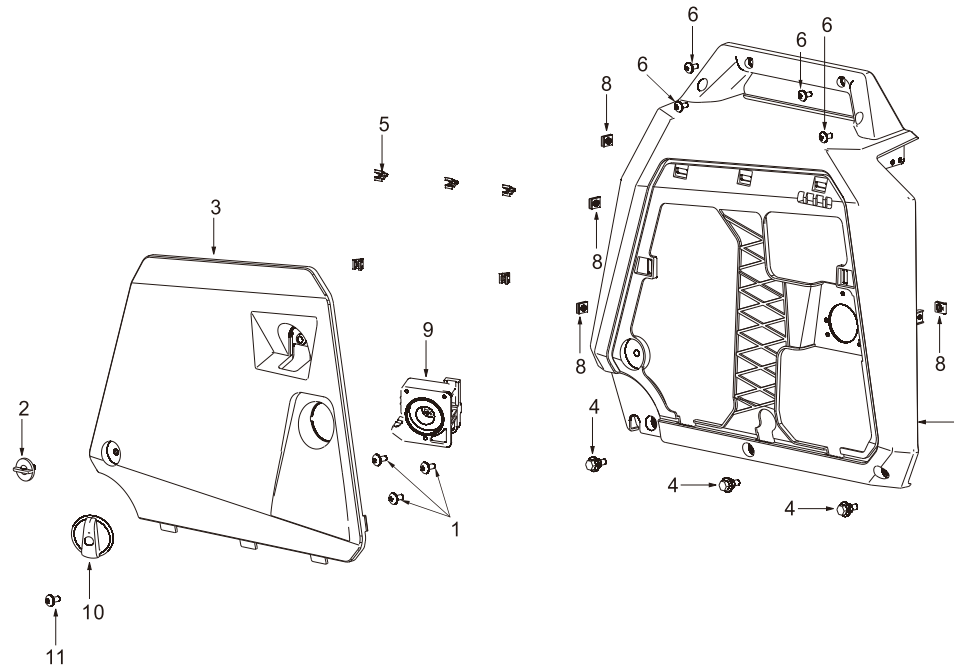
消声器护罩 (Muffler shield)

| 序号 No. | 零部件图号 Part No. | 零部件名称 | Description | 数量 Quantity |
|-----------|---------------------|----------------|------------------------|----------------|
| 1 | 2420.J05.0010.04.00 | 消声器护罩 | Muffler shield | 1 |
| 2 | 0818.05016.00.07 | 十字大盘头螺钉 (5×16) | Screw | 8 |
| 3 | 7824.474.001V.00.00 | 消声器密封胶套 | Muffler sealant sleeve | 1 |
| 4 | 5598.467.001V.00.00 | 梅花孔挡圈 | Plum ring | 4 |



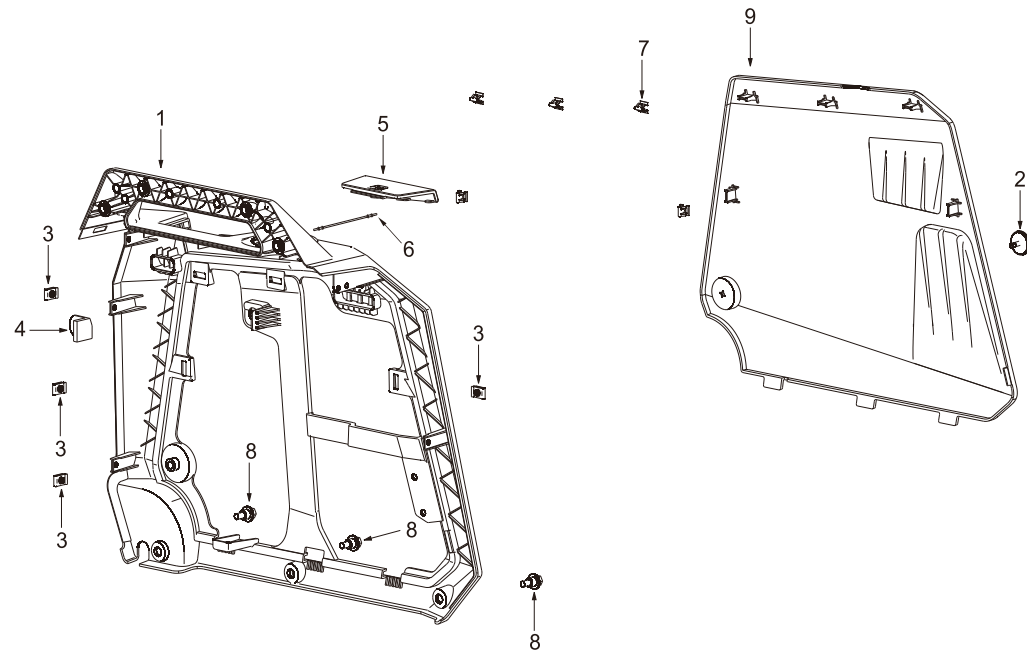
面板 (Panel)

| 序号 No. | 零部件图号 Part No. | 零部件名称 | Description | 数量 Quantity |
|-----------|---------------------|----------------|-------------------------------|----------------|
| 1 | 6655.J05.0010.00.00 | 面板座 | panel bed | 1 |
| 2 | 3370.J05.0190.00.99 | 面板 | panel | 1 |
| 3 | 0818.05016.00.07 | 十字大盘头螺钉 (5×16) | Cross recessed pan head screw | 8 |
| 4 | 9461.J05.0010.00.00 | 拉杆固定板 | Pull rod fixing plate | 1 |
| 5 | 2426.J05.0010.04.00 | 拉杆组件 | Rod components | 1 |
| 6 | 0818.05010.00.07 | 十字大盘头螺钉 (5×10) | Cross recessed pan head screw | 2 |
| 7 | 6854.528.0021.00.00 | 调压整流器 | Voltage regulating rectifier | 1 |
| 8 | 5787.05016.00.01 | 带盘螺栓M5×16 | Bolt | 1 |
| 9 | 4492.J05.0010.00.00 | 反拖启动模块 | Anti-drag startup module | 1 |
| 10 | 5789.06014.00.01 | 带盘螺栓M6×14 | Bolt | 2 |
| 11 | 6111.469.0020.00.00 | 螺栓 M3*10 | Bolt | 5 |
| 12 | 5529.000.0010.00.00 | CO报警器支架 | CO alarm bracket | 1 |
| 13 | 5528.000.0050.00.00 | CO报警器 | CO alarm | 1 |



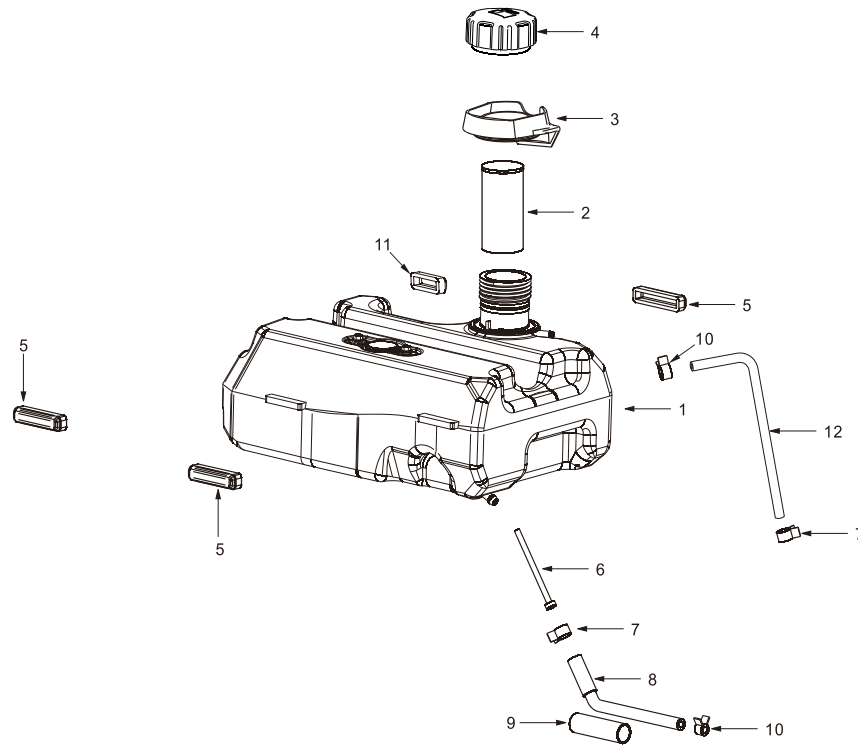
左外观盖板 (Left exterior cover)

| 序号 No. | 零部件图号 Part No. | 零部件名称 | Description | 数量 Quantity |
|-----------|---------------------|----------------|--------------------------------------|----------------|
| 1 | 0819.04212.00.01 | 十字沉头自攻螺钉4.2×12 | Cross countersunk head tapping screw | 3 |
| 2 | 1560.J05.0010.04.00 | 旋钮 | rotary knob | 1 |
| 3 | 5596.J05.0010.P4.00 | 左外观盖板 | ornament shell | 1 |
| 4 | 7344.446.0010.00.00 | 内六角螺栓 | Bolt | 3 |
| 5 | 5324.J05.0010.00.00 | 夹片卡 | Clip | 5 |
| 6 | 0818.05016.00.07 | 十字大盘头螺钉5×16 | Screw | 4 |
| 7 | 2220.J05.0010.04.00 | 左外壳部件 | Left shell | 1 |
| 8 | 6178.05000.00.04 | 夹片螺母(M5) | Nut | 4 |
| 9 | 2140.473.0011.00.00 | 油气转换开关 | Oil-gas switch | 1 |
| 10 | 2140.473.0011.00.01 | 油气转换开关 | Oil-gas switch | 1 |
| 11 | 0818.04014.00.01 | 螺钉M4×14 | Screw | 1 |



右外观盖板 (Right exterior cover)

| 序号 No. | 零部件图号 Part No. | 零部件名称 | Description | 数量 Quantity |
|-----------|---------------------|-----------|------------------------|----------------|
| 1 | 2222.J05.0010.04.00 | 右外壳部件 | Right shell | 1 |
| 2 | 1560.J05.0010.04.00 | 旋钮 | Rotary knob | 1 |
| 3 | 6178.05000.00.04 | 夹片螺母 (M5) | Nut | 4 |
| 4 | 6234.467.002V.00.00 | 发动机缓冲胶垫B | sheath | 1 |
| 5 | 4259.J05.0010.04.00 | 火花塞盖板 | Spark-plug outer cover | 1 |
| 6 | 4562.469.001V.00.00 | 防丢橡胶条NR | Anti loss rubber strip | 1 |
| 7 | 5324.J05.0010.00.00 | 夹片卡 | Clip | 5 |
| 8 | 7344.446.0010.00.00 | 内六角螺栓 | Bolt | 3 |
| 9 | 5596.J05.0020.P4.00 | 右外观盖板 | Right exterior cover | 1 |



燃油箱部件 (Fuel tank components)

| 序号 No. | 零部件图号 Part No. | 零部件名称 | Description | 数量 Quantity |
|-----------|----------------------|-------------|--------------------------------------|----------------|
| 1 | 3200.J05.C010.00.00 | 油箱部件 | Tank, Fuel | 1 |
| 2 | 3200.467.001V.00.02 | 燃油滤网 | Fuel filter | 1 |
| 3 | 3200.J05.0010.00.03 | 注油口胶套 | Sheath | 1 |
| 4 | 3200.474.C010.00.01 | 油箱盖 | Tank cap | 1 |
| 5 | 7868.469.001V.00.00 | 油箱支撑胶套NR | Sheath | 3 |
| 6 | 3208.P70.001V.00.00 | 过滤嘴 | Filt tip | 1 |
| 7 | 2360.458.R007V.00.00 | 带形油管夹Φ11 | Ferrule | 2 |
| 8 | 2330.469.C010.00.22 | 油管 | Oil tube | 1 |
| 9 | 2332.467.006V.00.00 | 硅胶保护套Φ10×50 | Sheath | 1 |
| 10 | 2360.458.R003V.00.00 | 带形油管夹Φ8 | Ferrule | 2 |
| 11 | 5522.467.003V.00.00 | 油箱减震胶套C | Damping rubber sleeve for oil tank | 1 |
| 12 | 2330.460.C100.00.00 | 燃油蒸发收集管 | Fuel oil evaporation collection pipe | 1 |